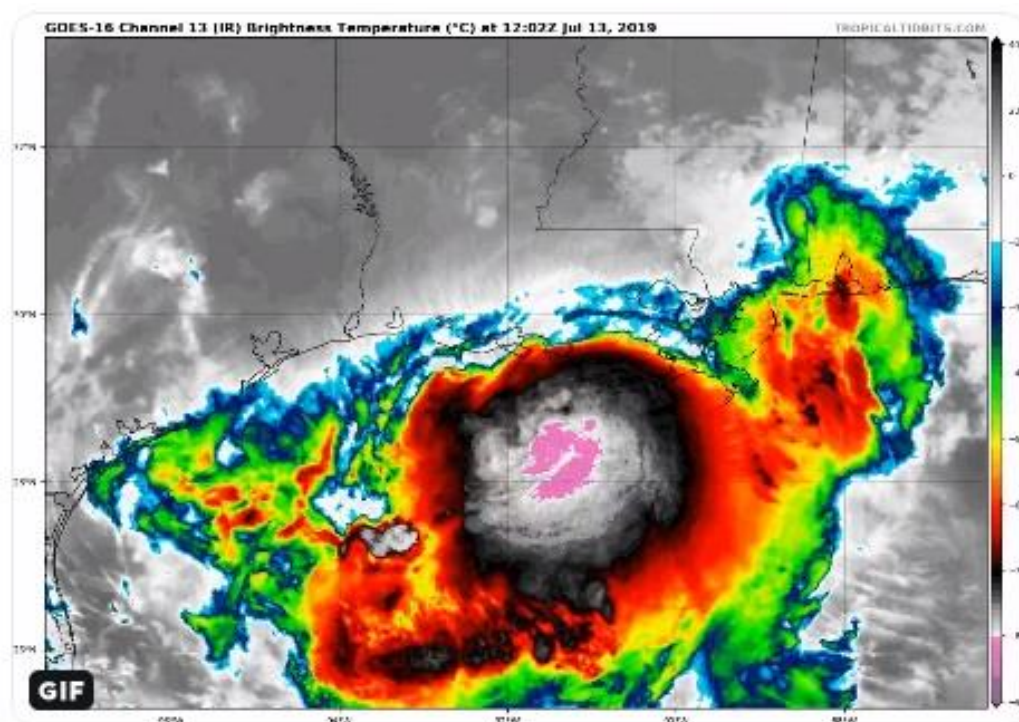


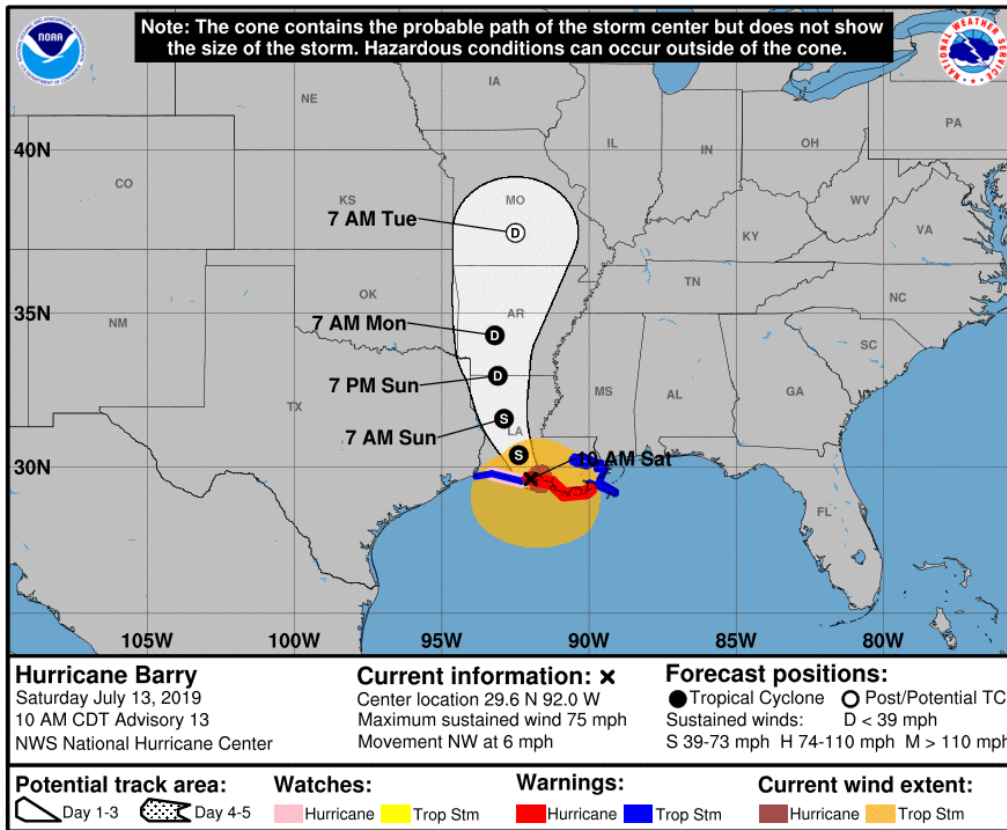
Washing Away U.S Agricultural Output



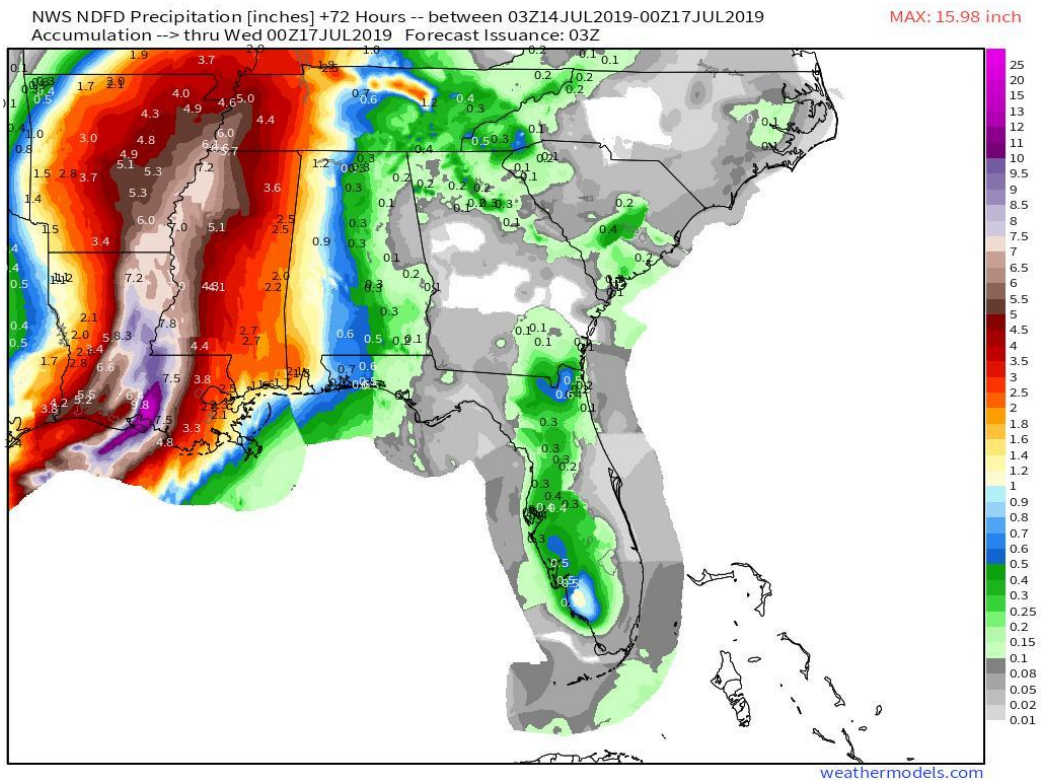
Eyes are on storm Barry which was just a sliver below becoming a hurricane in strength and making a landfall in Louisiana.

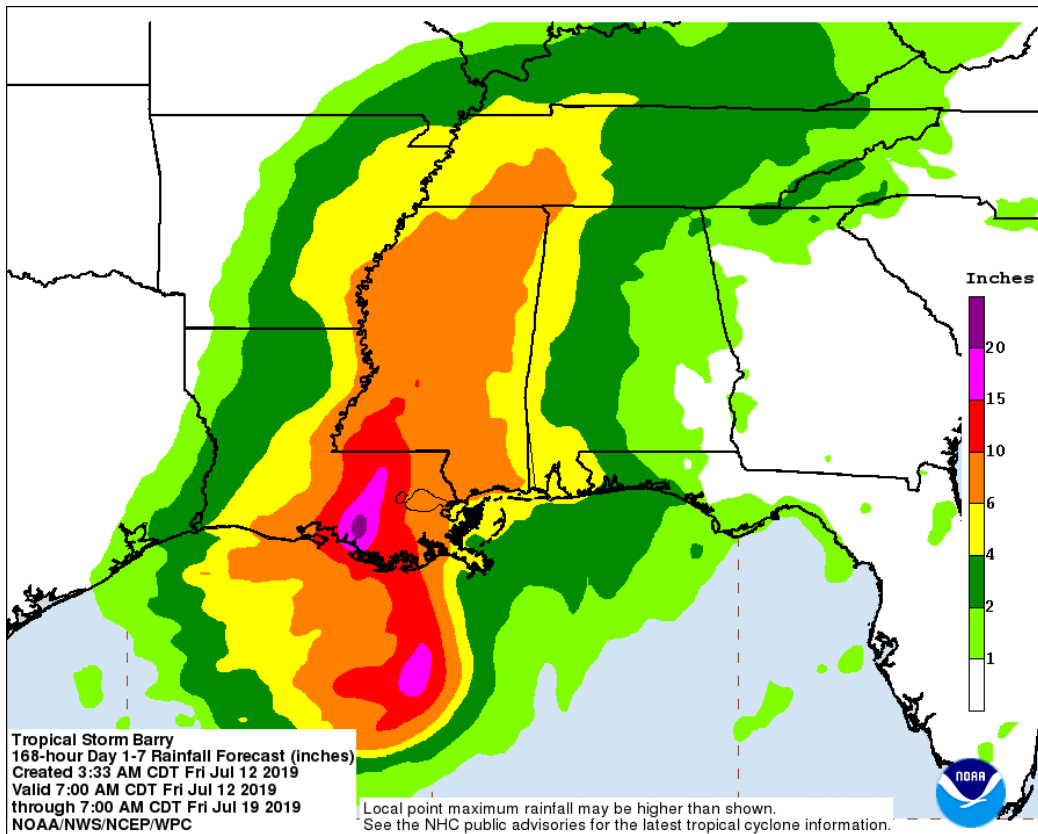


Shown below is the cone of the storm track, and as you can see, this is going to hit the grow zone belts. That is exactly what we do not need, more flooding in areas where delayed planting or no planting was experienced. That storm cone looks ready to push over previously flooded and barely unworkable farm fields in the grow zones of the central United States.

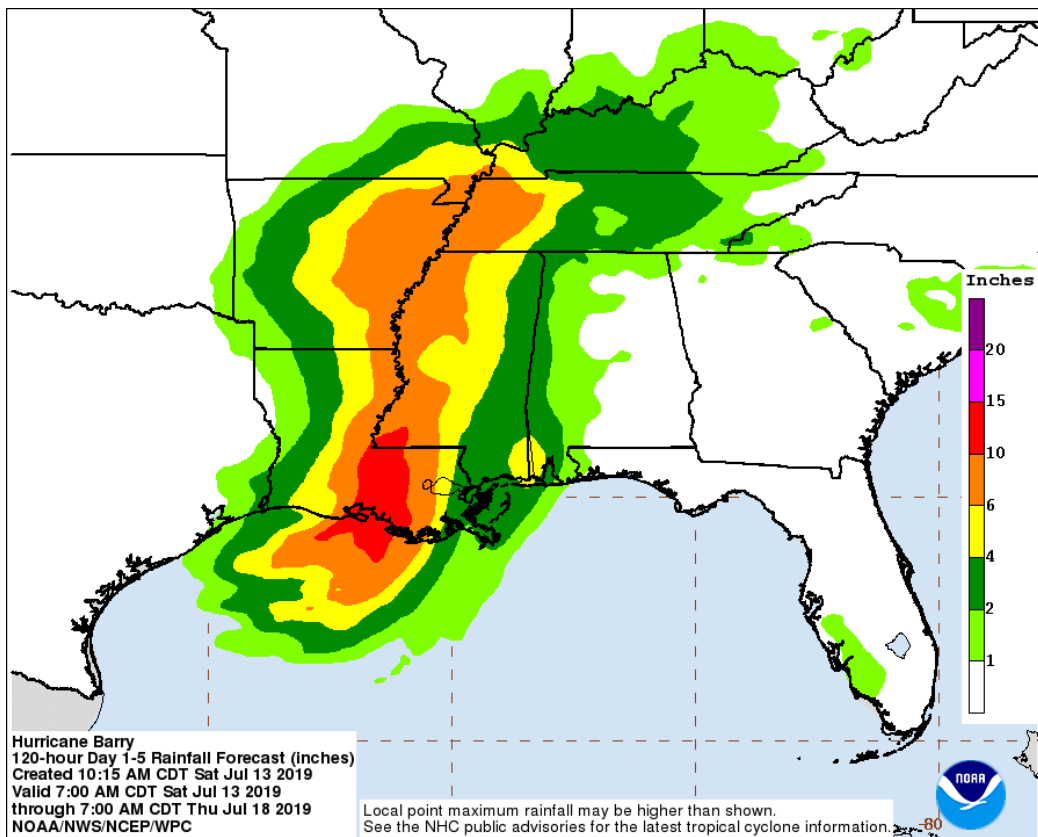


Ryan Maue at *weathermodels.com* shows the track of the moisture in this graph, and as shown, it is going to follow the Mississippi River. This forecast matches up with NOAA's data.





The precipitation will start to decline slightly, but it will still reach Illinois, Indiana, and Ohio, as it approaches Missouri.



Three things are going to happen during this storm. First, inland waterway transportation will be affected and this has already been observed during the flooding of the Spring River. This resulted in a barge traffic decrease 19% due to high water and debris in the rivers, that resulted in hazardous navigation conditions.

Moving Grain: Inland Waterway Conditions Improve

AgFax

July 11, 2019
From USDA



Tow delays are reported at locks on the Upper Mississippi River, as traffic is slowly returning to normal operations. Navigation conditions have been improving on the Illinois, Ohio, and Arkansas Rivers. The number of grain barges being unloaded at Mississippi River export elevators amounted to 14,998 year to date, a 19 percent decrease from the 3-year average.

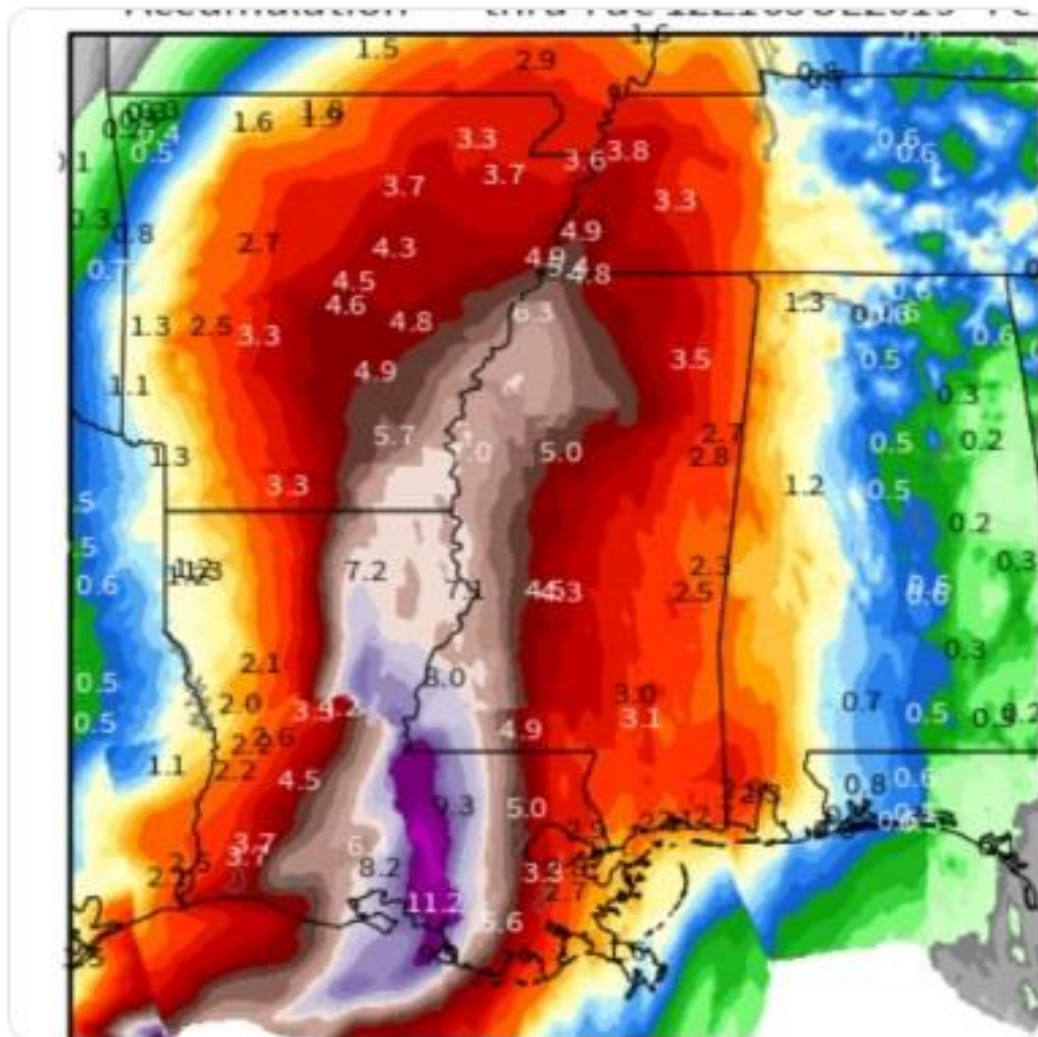
If we follow this track, it is going to pass through Missouri, Tennessee, Louisiana, Arkansas and it is going to push further north. The good news is these 14-16 inch rainfalls have been reduced to a 10 inches.



Ryan @RyanMaue · 10h

Barry update -- good news.

Forecast rainfall totals have come down substantially but still present a problem on top of already flooded rivers. Only a narrow band of 10-14" expected ... 6" or so well into Mississippi.



During this time, the second problem to be encountered will be reduced pollination of flowering rice.

Arkansas Rice: Still a Long Way to Go

AgFax

July 12, 2019

By Jarrod Hardke, University of Arkansas Extension Rice Specialist



Some of the predictions have started to reduce our expected rainfall amounts, but things continue to change. The greatest concerns are wind to cause lodging, but also rainfall during the middle of the day on flowering rice that may reduce pollination.

Because most of the rice crops are flowering in July, how much of the total will not be able to pollinate due to this storm? As shown on this table, a quarter of the entire US rice crop is going to diminish in output due to the lack of flowering and pollination. So, there is a downtrend forecasts for rice production in the US.

Table 1. Percent of acres predicted to reach 50% heading by week based on DD50 enrollment.

Date	Percentage
July 6 – 12	9.3%
July 13 – 19	25.1%
July 20 – 26	28.4%
July 27 – Aug. 2	16.8%
Aug. 3 – 9	9.3%
Aug. 10 – 16	5.8%
Aug. 17 – 23	3.2%
Aug. 24 – 30	1.5%
Aug. 31 – Sept. 6	0.6%

Indiana, on the first of July, is still wet, hence, the fields are unplanted yet.



And on July 10th, this is how some of the corn fields look like after a small flood.



FarmWeekNow/RFD Radio @FarmWeekNow · Jul 10

When it rains... Get the latest update on #plant19, #noplant19 #field and ##farm conditions from farmers across #Illinois: bit.ly/CWJuly9



This is how fragile those plants are, they just snapped from only a small flood, how about a 10-inch rain? What will happen to the newly emerged crops that the USDA called a 'scrapy emergence'?



This is what is meant by 'scrapy emergence', the left image was last year (2018), and the right image is this year (2019). Crop maturation is so far behind.



Photos showing 'scrapy emergence' are all around the web already. This one here is from Ohio.



Another from Iowa.

Not Knee-High



DeKalbCo Farm Bureau
@DCFBureau



Field corn typically well exceeds the old saying that corn is, "Knee-High by the 4th of July." Due to rain and this year's planting crisis, many corn fields are barren or showing minimal growth. #4thofjuly2019 #noplant19

♡ 7 10:44 PM - Jul 3, 2019

Yet the USDA could not get their information together. They still cannot tell us that corn production will be decreased this year and are still insisting on increased production. Some magic has to be done, for this Barbie knee-high corn, on the 4th of July, to happen.



Dallas Henry
@DallasCHenry1

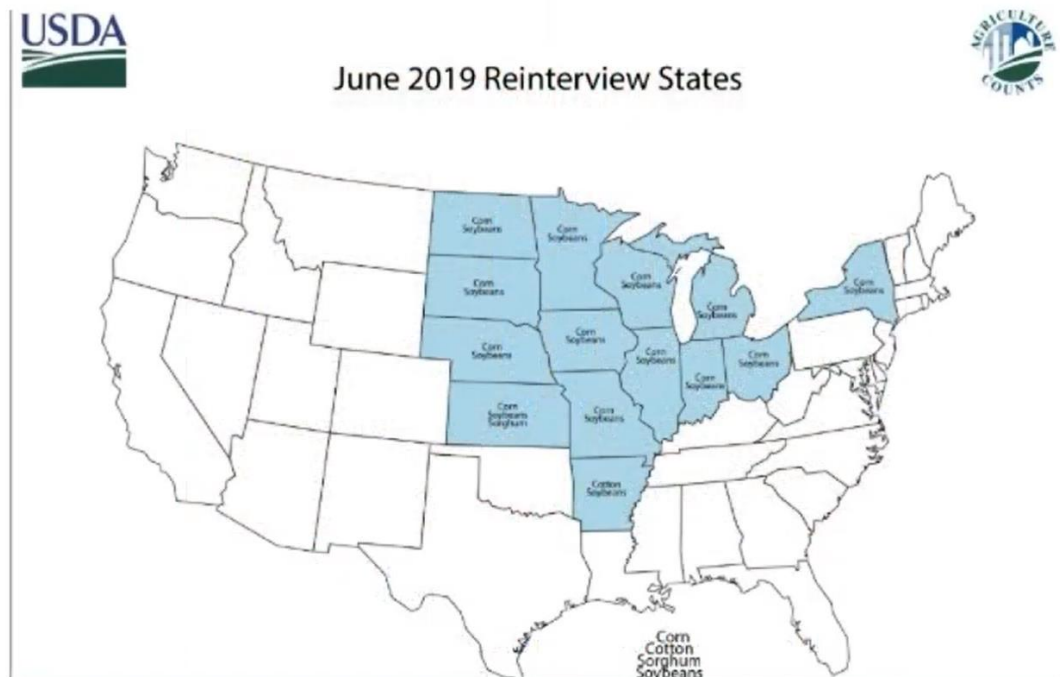


Farm Barby says even the late planted corn is knee high !!!

♥ 956 3:19 AM - Jul 5, 2019

USDA needs to resurvey these 13 states, because the data they released on May 28th was done poorly. They said that even though the numbers were significantly lower, there will still be 3% increase in yield, which is questionable.

USDA admitted the numbers are out of date. Buried in Friday's report was USDA announcing it will resurvey corn acres in 13 states, planted acreage of soybeans in 14 states and cotton in Arkansas. Those findings will be released in August.



If you look around social media where firsthand experience regarding crop planting was shared, you can see the reality, the USDA has lost our trust on insider-trading during that time.



Acreage

ISSN: 1949-1522

Released June 28, 2019, by the National Agricultural Statistics Service (NASS), Agricultural Statistics Board, United States Department of Agriculture (USDA).

Crop Comments

Corn: The 2019 corn planted area for all purposes is estimated at 91.7 million acres, up 3 percent from last year. Growers expect to harvest 83.6 million acres for grain, up 2 percent from last year.

Farmers responding to the survey indicated that 83 percent of the intended corn acreage had been planted at the time of the interview, significantly lower than the 10-year average. Record low planted area is estimated in Rhode Island, while record high planted area is estimated in Nevada and Oregon.

By June 2, producers had planted 67 percent of the Nation's corn acreage, 29 percentage points behind both last year and the 5-year average. Forty-six percent of the corn acreage had emerged by June 2, thirty-eight percentage points behind both last year and the 5-year average. Emergence in 13 of the 18 estimating States was behind the 5-year average by 20 percentage points or more.

You should have seen who made billions, on the opposite trades, when USDA released their report. Hundreds of thousands of contracts were magically replaced in the opposite direction.

I believe that we are being lied to. I am confident that the governments of the world are trying to mitigate panic at the moment, because China is down by 30 to 35% on its corn production and America is also down significantly, by probably 40%.

I have been saying, this is all because of an intensifying Grand Solar Minimum and we need to get ready to move our agricultural zones and start indoor vertical agriculture, to replace what will be lost outdoors. Governments of our world, however, do not want to talk about this Grand Solar Minimum and the intensifying 400-year cycle in our Sun.

Climate Revolution

The Grand Solar Minimum



Understand - Prepare - Adapt – Thrive

How the Sun will Affect Society, Economy and Food Prices

By David DuByne, Bill & Richard Porter

Thanks for reading, I hope you got something out of the article. If you would like more content like this, I produce the tri-weekly Mini Ice Age Conversations podcast, 30 minutes of in-depth analysis on the GSM you can take on the go through out your day.

Mini Ice Age Conversations Podcast

iTunes: <https://itunes.apple.com/us/podcast/a...>

Soundcloud: <https://soundcloud.com/adapt-2030>

Libsyn: <http://adapt2030.libsyn.com/>

MIAC #212 First Grand Solar Minimum Global Food Shock is Here
<http://adapt2030.libsyn.com/miac-212...>

Climate Revolution is a 'must read' for the understanding of our Sun driven climate as we progress deeper into the new Eddy Grand Solar Minimum. Weather extremes leading to Global food scarcity and high food prices are here now, and this book describes the expected changes, how to survive & thrive during future challenging times with practical preparations.

NEW ADAPT 2030 Climate Revolution

<https://payhip.com/b/3sVi/af5d15cc7ddd65e>

Support ADAPT 2030 by Visiting Our Sponsors

My Patriot Supply

2-Week Food Supply 92 servings

www.preparewithadapt2030.com

True Leaf Market Organic & Heirloom Seeds

[ADAPT 2030 True Leaf Market Link](#)

ADAPT 2030 Amazon Grand Solar Minimum Book Store

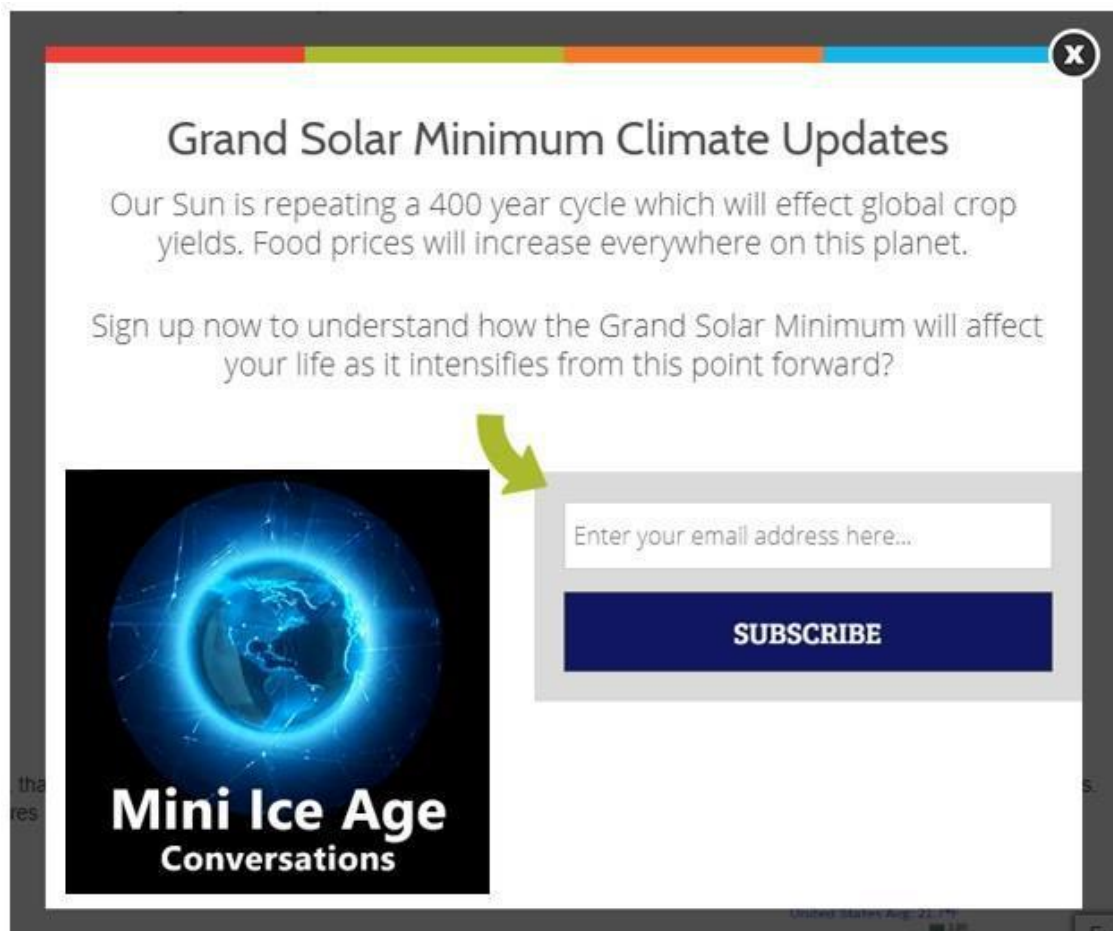
<https://www.amazon.com/shop/adapt2030>

ADAPT 2030 Patreon www.patreon.com/adapt2030

ADAPT 2030 Subscribe Star www.subscribestar.com/adapt-2030

For the ADAPT 2030 Grand Solar Minimum newsletter jump over to Oilseedcrops.org where you can enter your email and sign up. Move your mouse around for about 10 seconds and this box will pop up.

Join ADAPT 2030 NEWSLETTER <http://www.oilseedcrops.org>



Grand Solar Minimum Climate Updates

Our Sun is repeating a 400 year cycle which will effect global crop yields. Food prices will increase everywhere on this planet.

Sign up now to understand how the Grand Solar Minimum will affect your life as it intensifies from this point forward?

Enter your email address here...

SUBSCRIBE

Mini Ice Age Conversations

*** Today's Story Links ***

Corn farmers in Midwest lament flooding's effect on their crops
<https://www.foxbusiness.com/features/corn-farmers-in-midwest-lament-floodings-effect-on-their-crops>

Rainfall totals TS Barry
https://www.nhc.noaa.gov/refresh/graphics_at2+shtml/025509.shtml?rainqpf#contents

WeatherModels.com
https://pbs.twimg.com/media/D_aDndwXkAAWzYq.jpg
https://pbs.twimg.com/media/D_Y7RXgXUAEMNKR.jpg

Storm Track TS Barry

https://www.nhc.noaa.gov/refresh/graphics_at2+shtml/055012.shtml?con#contents

Arkansas Rice: Still a Long Way to Go

<https://agfax.com/2019/07/12/arkansas-rice-still-a-long-way-to-go/>

Rice planting table

https://i0.wp.com/agfax.com/wp-content/uploads/rice_table.jpg?ssl=1
https://i2.wp.com/agfax.com/wp-content/uploads/rice_figure.jpg?ssl=1

Already wet across US planting zones

<https://agfax.com/2019/07/11/arkansas-rice-coming-tropical-storm-a-triple-threat/>

Moving Grain: Inland Waterway Conditions Improve

<https://agfax.com/2019/07/11/moving-grain-inland-waterway-conditions-improve/>

Grain price news

<https://agfax.com/2019/07/12/rice-market-all-eyes-on-tropical-storm-barry/>

Fragile corn in floods

https://pbs.twimg.com/media/D_HNKPoWsAESEyE.jpg

*** ADAPT 2030 Social Media Links ***

YOUTUBE [ADAPT 2030 Mini Ice Age 2015–2035 Series on YouTube](#)

BITCHUTE <https://www.bitchute.com/hashtag/adapt2030/>

BRIGHTEON <https://www.brighteon.com/channel/adapt2030>

STEEM <https://steemit.com/@adapt2030>

MINDS <https://www.minds.com/ADAPT2030>

MEDIUM <https://medium.com/@globalcooling>

FB <https://www.facebook.com/Miniiceage>

TWITTER <https://twitter.com/adapt2030>

GAB <https://gab.ai/ADAPT2030>