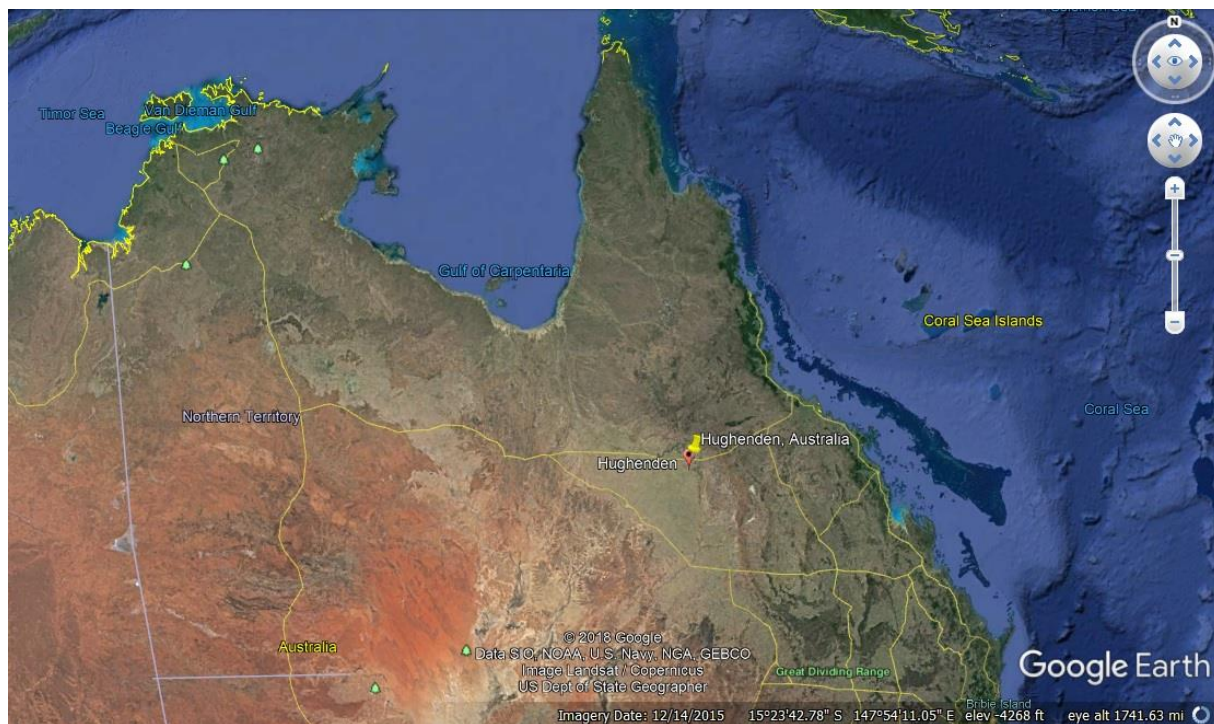


# China Looks for Food in Australia & Cosmic Ray Effects Globally



Northeast Queensland area is pinned on this map, and it's interesting because what looks like a giant lake basin to the west of that area was once an inland sea.



China seems to be running all around places globally that are presently deserts, just before the rainfall starts on its multi-thousand-year cycle. It is then safe to assume based on past cycles that this part of Northern Queensland is going to become wet again. This is backed-up by the article, "Chinese investors back major new meat works for north Queensland." At the moment, incredible drought is engulfing the place, yet they are still thinking of raising 50,000 head of cattle.

**9 NEWS**

## Chinese investors back major new meatworks for north Queensland



"Importantly this new project will provide the opportunity to expand, develop further export channels, and grow the domestic supply chain for Queensland beef into China."

Chief executive of CNVM Investments, Miao Wang, said the success of the meatworks could lead to greater Chinese investment in the future.

The article included this image for fodder, so, where will the ground water come from? Maybe they are thinking they could drill a well, or maybe they are aware of the cycles, and Chinese investors know that more rainfall will come. The latter is logical, because flood events have been observed again and again over the last 4 years across Australia, and record rains have also been recorded in multiple locations.

# Chinese investors back major new meatworks for north Queensland

An application for a feedlot holding as many as **50,000 cattle** will be submitted in order to provide for future growth.



A mooted major feedlot will require large amounts of fodder, which proponents hope can be grown locally in new irrigation blocks. (ABC News: David Chen)

I found this PDF showing the Flood inundation areas of Flinders catchment. The area circled in yellow on the chart is where the Chinese are going to have their cattle ranching. Notice, if it starts to rain, what area is going to fill?

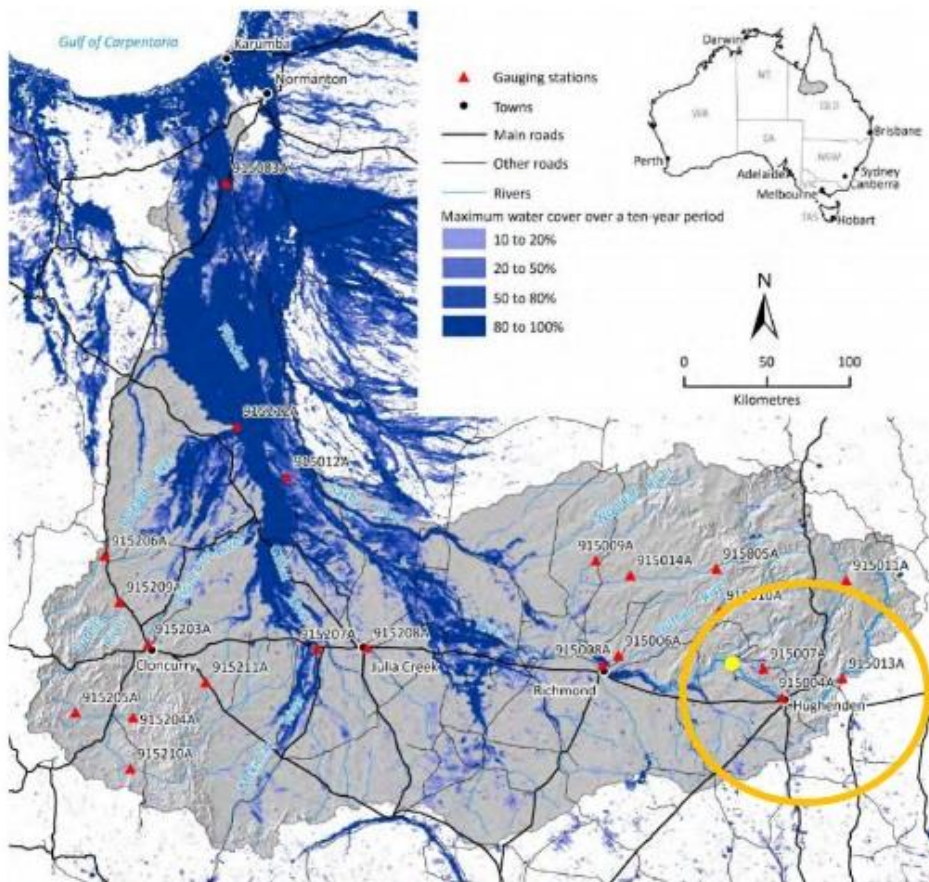
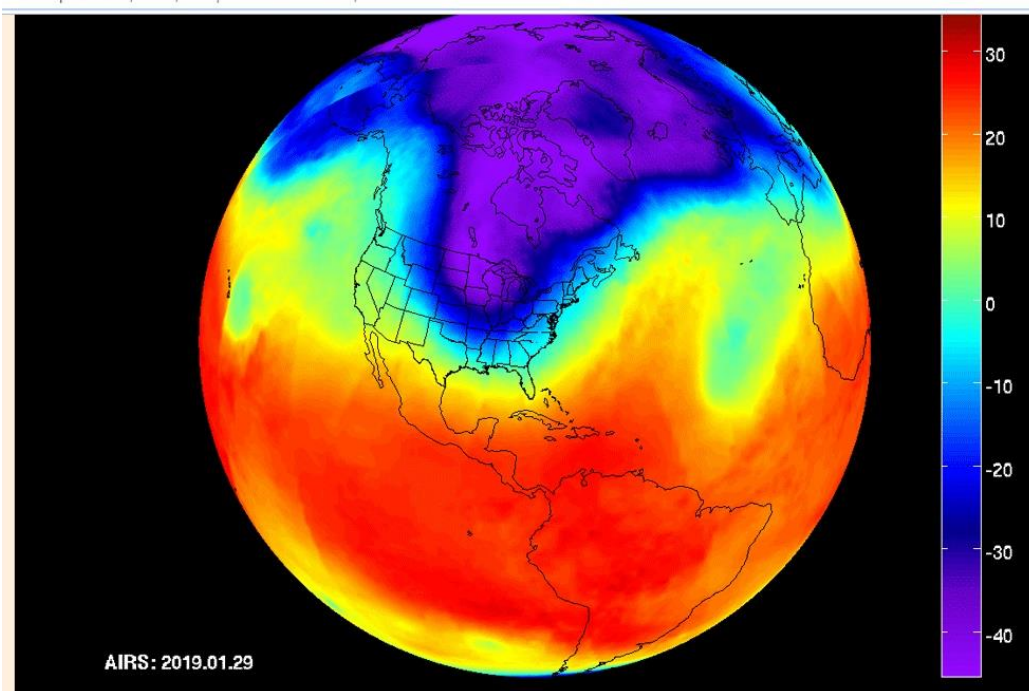


Figure 6 Flood inundation map of Flinders catchment

Source: CSIRO (2013)

The eastern edge of the yellow circle is next to a river, which means free water if you understand how cycle works. If you are interested in learning about how Earth's jet streams are undulating, or how the equatorial vortex and polar vortex occur, check out *ozpolitic*. Bobby is over there leading the ice age board.

[www.ozpolitic.com/forum/YaBB.pl?num=1552800608/316](http://www.ozpolitic.com/forum/YaBB.pl?num=1552800608/316)



In case you are still wondering why the Chinese are running around drought stricken Northern Queensland to start cattle ranches, you might want to check their economic scenario. Chinese vegetable prices hit record highs due to persistent cold and record rains. Also, food inflation of 45% occurred this year. Those natural calamities not only brought floods, but also armyworms that devastated the corn crops.



JUNE 11, 2019 CAP ALLON 0 COMMENT

The floods are all encompassing. The image shown below is how the farm fields look in China, which is very similar to what the American farm fields looked like during the 2019 planting season. This much flooding dents any type of agricultural production.



This has been a persistent situation since mid-May, and as you can see, roads can only be discerned due to the trees outlining them, and periphery farmland is a lake. Levees were also broken, like what was seen across Arkansas and in different places along the Mississippi River, specifically, Missouri. The inundation of the cities has been non-stop as well.

 **CGTN**   
@CGTNOfficial



Bad weather triggers floods in E and SW China, millions affected



♡ 158 2:36 PM - Jun 11, 2019



More importantly, it is disturbing that only 19.91 million people have been reported to have been affected by these floods from way back in June. In my opinion, that number is incorrect because they had other events on top of that including massive atmospheric compression events, massive hail damaging billions of property, as well as people being crushed and hit by hail.



People's Daily, China

@PDChina



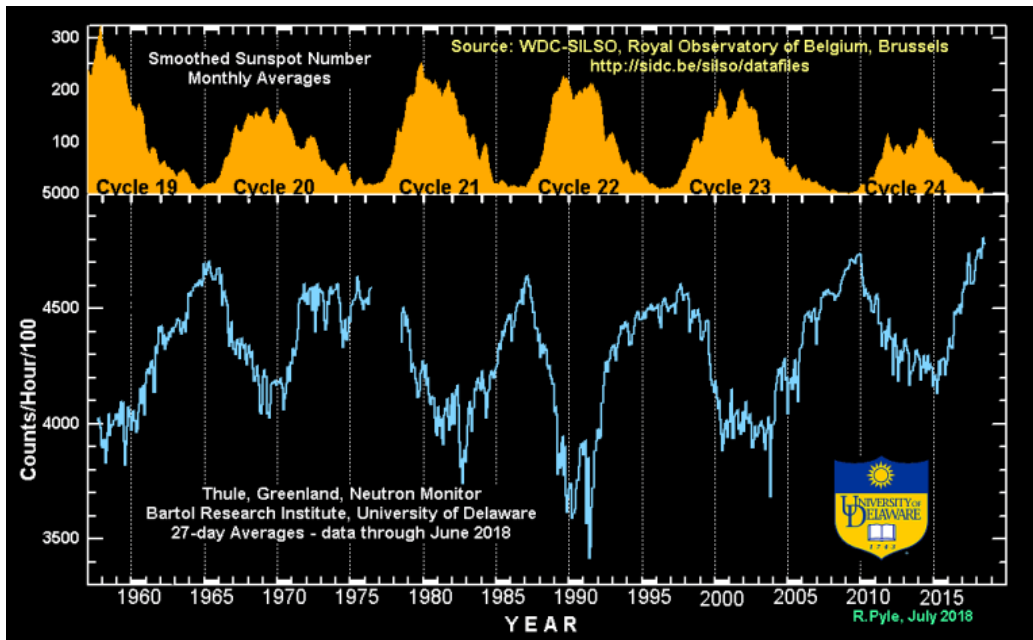
A total of 19.91 million people have been affected by floods since the beginning of the flood season this summer in China, according to the Ministry of Emergency Management, and the disasters caused total losses of 53.4 billion yuan (\$7.7 billion).



277 1:30 PM - Jul 12, 2019



Now, they are looking at the increase of the cosmic rays to explain those events. As of this moment, an all-time high for the Space Age has been confirmed, and the conjecture is, there will be even higher cosmic rays than what they had in the late 1800s, as we turned into the 1900s for the new century. At that time, they were experimenting with x-rays, and so they could observe zips in different particles going across their plates in cloud chambers. The question is, will it be as high as 1898, 1899, and 1903? Or is it somewhere in that region stretching back a little further?



But whatever is happening, the increasing clouds and atmospheric vorticity or spinning winds in our atmosphere is definitely up-ticking. Look at this EF5 waterspout, for example. Year after year, the intensity of these waterspouts keeps on increasing. You can check the waterspouts four years ago and compare them to this image taken summer 2019.



**Waterspout comes ashore in Bastia, Corsica, 15 July, 2019**

Also, I want to take this opportunity to enumerate a few other weather anomalies that did not make more news coverage in the mainstream media. Scotland, especially, experienced freak hail that lifted up concrete manhole covers.



**Matt Dorans** Freak hail in Scotland lifting steel and stone manhole drain covers





Finally, this is among the slides in my presentation “Winter is Coming”. Atacama Desert, the world's driest desert, blooms for second year in a row in South America. Biblical rains across the Middle East were also seen, as well as the blooming of the deserts across the planet. Rains are also returning to grain growing regions in northern Africa.



Atacama, The world's driest desert blooms for the second year in a row in South America



Thanks for reading, I hope you got something out of the article. If you would like more content like this, I produce the tri-weekly Mini Ice Age Conversations podcast, 30 minutes of in-depth analysis on the GSM you can take on the go through out your day.

\*\*\*Mini Ice Age Conversations Podcast\*\*\*

iTunes: <https://itunes.apple.com/us/podcast/a...>

Soundcloud: <https://soundcloud.com/adapt-2030>

Libsyn: <http://adapt2030.libsyn.com/>

MIAC #218 Acceleration of Somethings not Right Feeling Globally  
<http://adapt2030.libsyn.com/miac-218...>

Climate Revolution is a 'must read' for the understanding of our Sun driven climate as we progress deeper into the new Eddy Grand Solar Minimum. Weather extremes leading to Global food scarcity and high food prices are here now, and this book describes the expected changes, how to survive & thrive during future challenging times with practical preparations.

NEW ADAPT 2030 Climate Revolution  
<https://payhip.com/b/3sVi/af5d15cc7ddd65e>

\*\*\*Support ADAPT 2030 by Visiting Our Sponsors\*\*\*

My Patriot Supply  
2-Week Food Supply 92 servings  
[www.preparewithadapt2030.com](http://www.preparewithadapt2030.com)

True Leaf Market Organic & Heirloom Seeds  
[ADAPT 2030 True Leaf Market Link](#)

ADAPT 2030 Amazon Grand Solar Minimum Book Store  
<https://www.amazon.com/shop/adapt2030>

ADAPT 2030 Patreon [www.patreon.com/adapt2030](http://www.patreon.com/adapt2030)

ADAPT 2030 Subscribe Star [www.subscribestar.com/adapt-2030](http://www.subscribestar.com/adapt-2030)

For the ADAPT 2030 Grand Solar Minimum newsletter jump over to Oilseedcrops.org where you can enter your email and sign up. Move your mouse around for about 10 seconds and this box will pop up.

Join ADAPT 2030 NEWSLETTER <http://www.oilseedcrops.org>

**Grand Solar Minimum Climate Updates**

Our Sun is repeating a 400 year cycle which will effect global crop yields. Food prices will increase everywhere on this planet.

Sign up now to understand how the Grand Solar Minimum will affect your life as it intensifies from this point forward?

Enter your email address here...

**SUBSCRIBE**

**Mini Ice Age Conversations**

United States Aug 21, 2019

\*\*\* Today's Story Links \*\*\*

Findlers Shire Council Irrigated Agriculture Development Project  
<http://eisdocs.dsdip.qld.gov.au/15%20Mile%20Irrigated%20Agricultural%20Development/IAS/15-mile-ias.pdf>  
<http://www.visithughenden.com.au/>

Chinese investors back major new meatworks for north Queensland  
<https://www.abc.net.au/news/rural/2019-07-29/meatworks-deeds-signed-in-hughenden/11355548>

A site here attempts to explain why human activities from CO2 affects the polar vortex to cause extreme cold & heat:

<http://www.ozpolitic.com/forum/YaBB.pl?num=1552800608/316>

<https://earth.stanford.edu/news/polar-vortex-science-behind-cold#gs.t4z1tu>

CHINESE VEGETABLE PRICES HIT RECORD HIGHS — THE RESULT OF PERSISTENT COLD AND RECORD RAINS

<https://electroverse.net/chinese-vegetable-prices-hit-record-highs-the-result-of-brutal-cold-spells-and-record-rainfall/>

CHINA'S FLOOD SEASON: TOTAL LOSSES EXCEED \$7.7 BILLION — 20 MILLION PEOPLE AFFECTED — MOST RAINFALL SINCE 1961 — COSMIC RAY FLUX

<https://electroverse.net/chinas-flood-season-total-losses-exceed-7-7-billion/>

\*\*\* ADAPT 2030 Social Media Links \*\*\*

YOUTUBE [ADAPT 2030 Mini Ice Age 2015–2035 Series on YouTube](#)

BITCHUTE <https://www.bitchute.com/hashtag/adapt2030/>

BRIGHTTEON <https://www.brighteon.com/channel/adapt2030>

STEEM <https://steemit.com/@adapt2030>

MINDS <https://www.minds.com/ADAPT2030>

MEDIUM <https://medium.com/@globalcooling>

FB <https://www.facebook.com/Miniiceage>

TWITTER <https://twitter.com/adapt2030>

GAB <https://gab.ai/ADAPT2030>