

The World We Live In



First off, I want to extend my gratitude to everyone who has been supporting and following the ADAPT 2030 channel.

As we move into the future, the image you see below is how you should think about your life's structure. Water sources should be near you and food should be accessible and easy to process. You should also learn to trade with others. Everyone should be thinking of how to live and organize communities because if not, there is going to be massive population declines.



As we go through ticking the boxes one by one showing the amplification of low solar activity, here is another one cosmic rays are increasing. This is absolutely a hundred percent indicator that our Sun's activity is decreasing, and as our magnetosphere weakens, more of these galactic cosmic rays penetrate our atmosphere. The science behind what is shown in the graph below has been peer-reviewed with tens of thousands of documents. So this is where we sit from 2017-2019 according to Finland Cosmic Ray Monitoring Station. This has also happened in California, New Hampshire and across the globe.

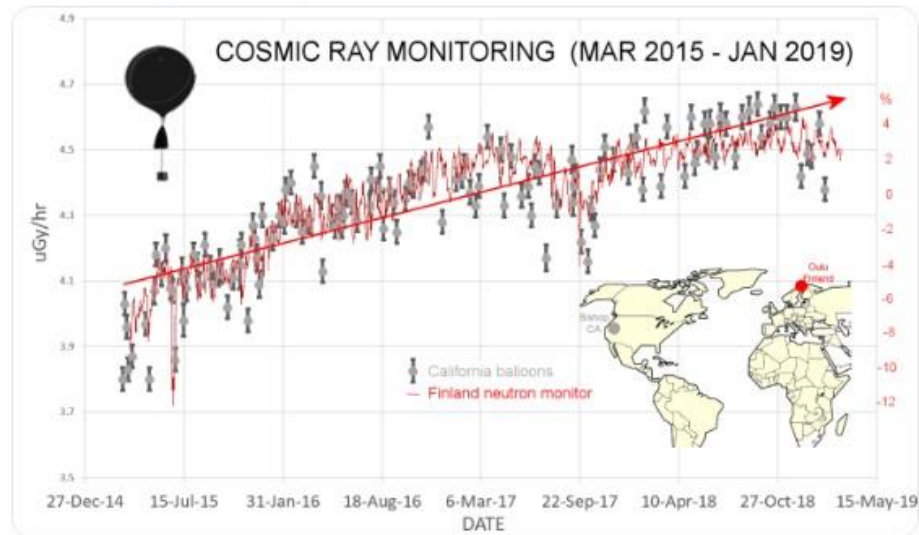


Infinite Unknown @SecretNews · Feb 21

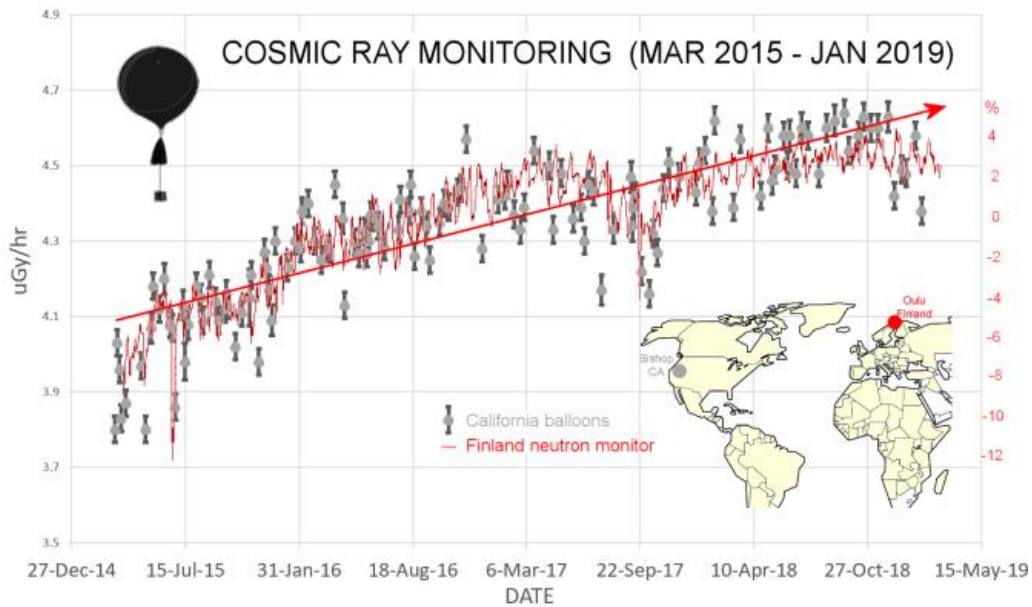
ATMOSPHERIC COSMIC RAYS ARE INCREASING: Cosmic rays in the stratosphere are intensifying for the 4th year in a row.

spaceweatherarchive.com/2019/02/21/cos...

#GSM #GrandSolarMinimum @Diamondthedave @adapt2030 @IceAgeFarmer
#ClimateChange #BreakingNews



If you look at it closely you see that Finland neutron monitor has a slight dip at the moment, but at the same time when global temperatures drop IPCC come up with some convenient excuse to explain away the failed prediction. They would say this is just a little pullback but it will continue to increase in the future. So think about cosmic rays to be in the same directional movement, it is going to continue to go up and up.



Just like the lyrics of the Coldplay song: you can say what is, or fight for it. That should be the way we need to think as we move forward. You are going to have to create reality.



You are going to have to manifest "it" with the vibrational frequency that you will be in, as we move forward.

Australia: Historic flooding to continue, worsen across Queensland this week

In northern Queensland last week, Cairns recorded a daily rainfall of 277 mm (10.91 inches). This is the most rain the city has had in a single day in more than a decade. Cairns ended January with 499 percent of their normal rainfall for the month, with 523 mm (20.81 inches) falling during the last 8 days of the month.



Cosmic rays are responsible for increasing cloud cover so we see all these atmospheric changes with massive floods, massive hails and lightning. These are going to amplify as the Grand Solar Minimum continues to intensify.



Dennis Uribe @denuribe73 · 5h

A Rare Winter Storm Has Covered All The Cacti In The Arizona Desert In Snow - Digg digg.com/video/snow-cac... #SmartNews

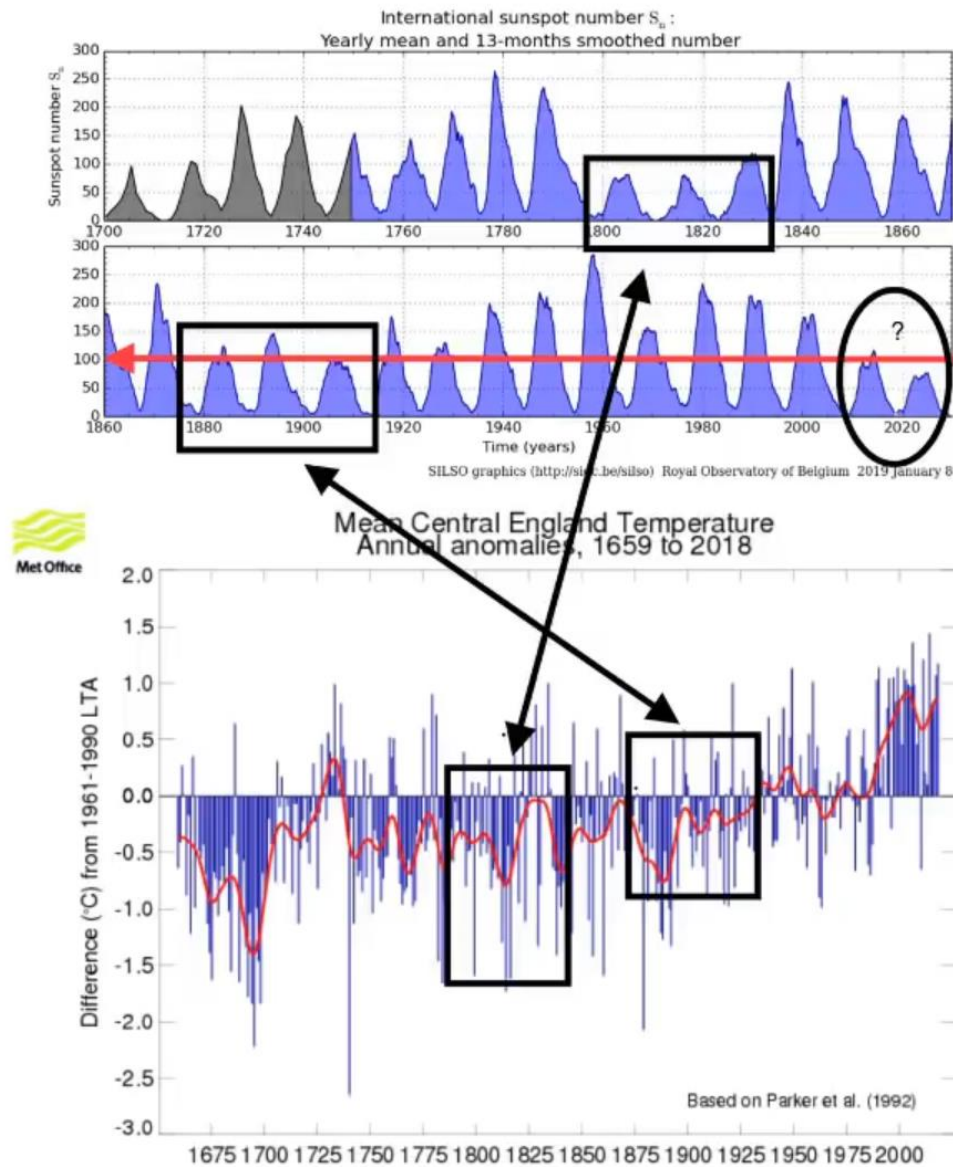


A Rare Winter Storm Has Covered All The Cacti In The Arizona Deser...

It's not the winter wonderland we originally had in mind, but it's the winter wonderland we deserve.

digg.com

If we take a look back through history, global temperatures (at the bottom of the graph) match decreases in solar activity. This chart only goes back to 1700 and forecast through 2020 to 2035 and this will take us back to the 1600s. This is literally a 400-year cycle at the bare minimum that we are going to repeat.



So then we would look for temperature drops on our planet, or things that are not fitting the IPCC CO2 model of marching temperatures into *in finem*.

2018 was 4th hottest year on record for the globe

Warning from Steven Goddard: This media may contain sensitive material. I may be cautious but I am going to look anyway.



Steve Goddard @SteveSGoddard · Jan 29

Replying to @priscian @ClimatismBlog and 21 others

Carl Mears says they are doing badly.

remss.com/research/clima...

This media may contain sensitive material. [Learn more](#)

[View](#)

1 10 19

What is so sensitive about temperature anomalies from 1979 to 2019? One thing, they disprove Global Warming. That is what sensitive and offensive means. Look at what this graph says anyway. This is the tropical mean from 30 South to 30 North. The IPCC has always been squawking about how the temperature is going to increase at the equator which is going to create a great amount of heat that is going to push the cloud bands, etc. If you take a look at where that temperature is, the average is 0.5C, half a degree above the baseline for the satellite era.



Steve Goddard @SteveSGoddard · Jan 29

Replying to @priscian @ClimatismBlog and 21 others

Carl Mears says they are doing badly.

remss.com/research/clima...

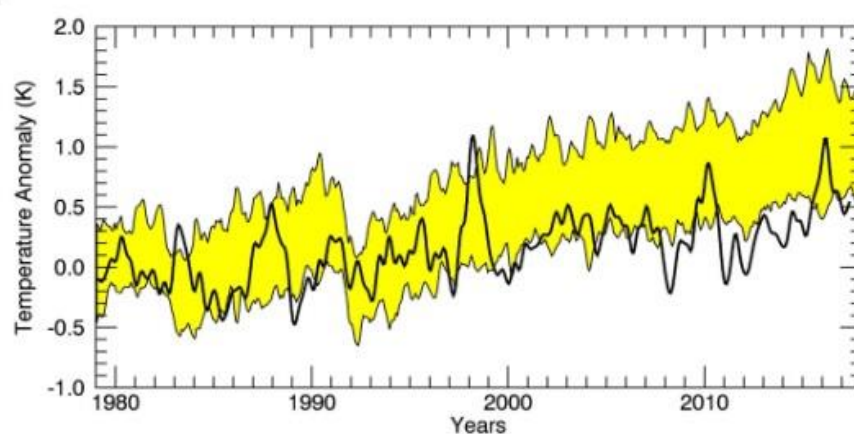


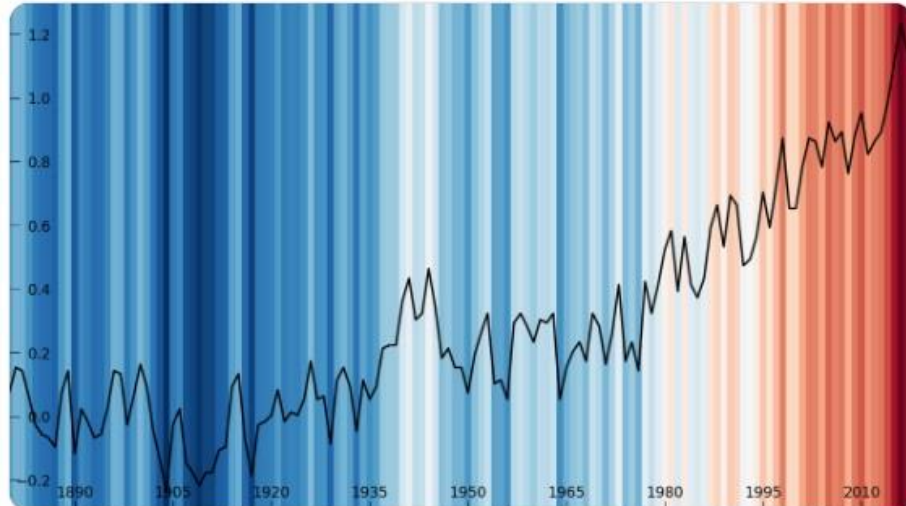
Fig. 2. Tropical (30S to 30N) Mean TLT Anomaly plotted as a function of time. The black line is the time series for the RSS V4.0 MSU/AMSU atmospheric temperature dataset. The yellow band is the 5% to 95% range of output from CMIP-5 climate simulations. The mean value of each time series average from 1979-1984 is set to zero so the changes over time can be more easily seen. Again, after 1998, the observations are likely to be on the low side of the simulated values, indicating that the simulations as a whole are predicting more warming than has been observed by the satellites.

Furthermore, take a look at NASA's average global temperatures. Unlike the graph earlier, this is not 30 North to 30 South, this is a global temperature variant, but they still put it at 1.1 degrees Celsius above the baseline. How is there such a disconnect between this and other temperature sets?

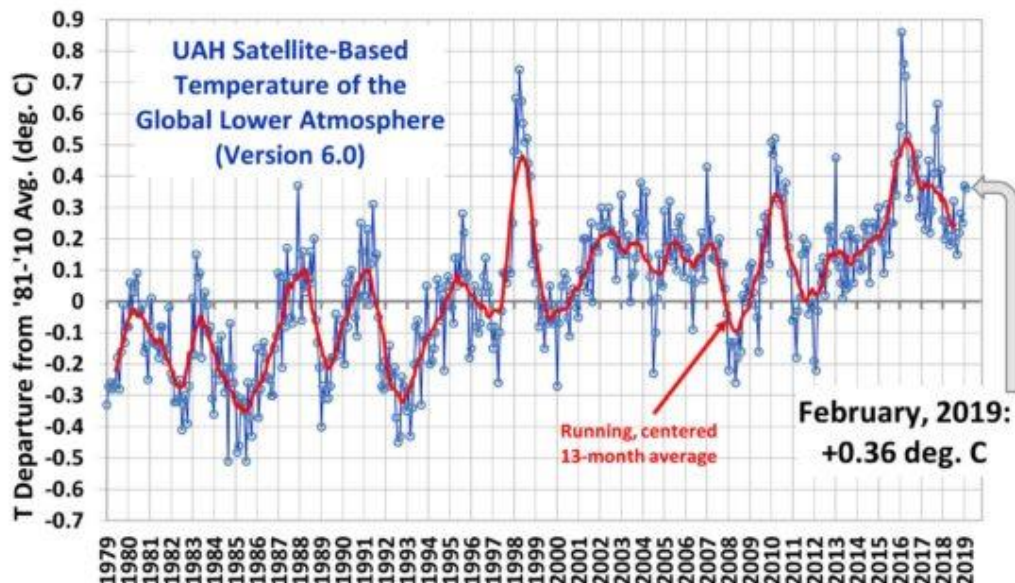


severe-weather.EU @severeweatherEU · 18h

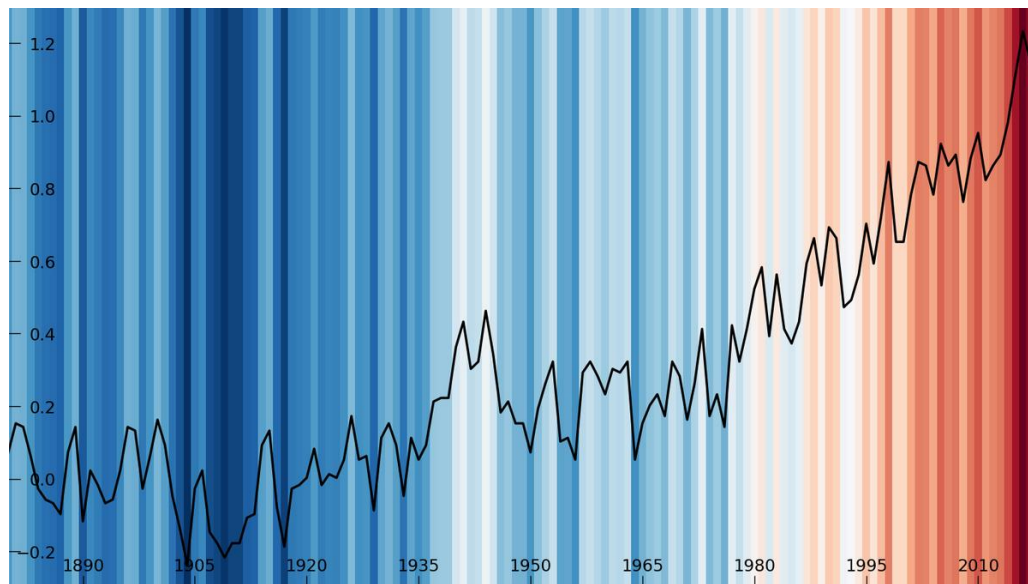
NASA GISTEMP annual average global temperatures 1880-2018. Plot: Levke Caesar / Stefan Rahmstorf



On the other hand, Dr. Roy Spencer from University of Alabama Huntsville is at 0.36C. Let me ask you, what is the most inconvenient information there? I see incongruent temperature datasets with NASA's overblown extreme heating dataset, you see what "inconvenient" means.



Look at the NASA's record more closely, that is more than 1 degree Celsius over the baseline.



Also, as we move forward through all political aspects will resemble a chessboard where everybody is positioning for grain deliveries. *US Marines in California Mountains to prepare*. Who are the enemy? It's Russia. Is it really Russia or is this a code word for Mini Ice Age or glaciation? Do you remember the Bruce Willis movie where a comet came down and was code named Ellie? Ellie is for *extinction level event*. Perhaps they just moved it to the word "Russia".



U.S. Marines in California Mountains fo...

Hunkered down behind a wall of snow, two U.S. Marines melt slush to make drinking...

ktla.com

Hmmm, is the enemy Russia- like they say?
Or is Russia code for mini ice age? 🤔

Feb 20

Meanwhile, this article has a video format in YouTube and if you have been following me, I want to thank you for your continued support. This is my 800th video and I am so excited. I'm going to bring you the next eight thousand videos as well as more articles to keep you updated as we move forward with these changes over the next years.



In addition, *Brighteon Pro-Liberty Community* has just changed their Community Guidelines. They are asking for user levels to have certain amount of click-through views to keep some amount of videos as backups on their channel. May I ask a personal favor for you to visit my channel in *Brighteon*.



USER LEVEL/VIDEO UNLOCKS

| User Level | Maximum Uploads | How to Unlock* |
|----------------|-----------------|-----------------------|
| New User | 10 | - |
| User 25 | 25 | 500 Channel Views |
| User 50 | 50 | 1,000 Channel Views |
| User 100 | 100 | 2,500 Channel Views |
| User 250 | 250 | 7,500 Channel Views |
| User 500 | 500 | 20,000 Channel Views |
| User 1000 | 1,000 | 50,000 Channel Views |
| Unlimited User | Unlimited | 100,000 Channel Views |

*Channel Views are the total sum of all the videos in your channel combined.

Brighteon the Pro-speech platform.



<https://www.brighteon.com/channel/adapt2030>

I am doing my best to bring this information because the changes are now here. They are already starting and we are out of time. From this point forward it will just be about damage control. And when I say that, I'm talking about the opportunity and danger, and also keeping your family safe along with your community and yourself, because these changes are going to be so ferocious and will be coming at full speed.

You are going to need a compass somewhere, and I hope for ADAPT 2030 channel to be your compass moving forward. I hope that this will give you some indication of where the safe zone is.



Be on the look-out for more information in my website www.oilseedcrops.org. and I will use Brighteon as a backup platform because they are Pro free-speech, and as the corporate media tries to reduce the message of the changes brought by the Grand Solar Minimum, this will be the place where you can find true information.



<https://www.brighteon.com/channel/adapt2030>

Thanks for reading, I hope you got something out of the article. If you like more information like this I produce the tri-weekly Mini Ice Age Conversations podcast, 30 minutes of in depth analysis on the GSM you can take on the go.

Mini Ice Age Conversations Podcast

iTunes: <https://itunes.apple.com/us/podcast/a...>

Soundcloud: <https://soundcloud.com/adapt-2030>

Libsyn: <http://adapt2030.libsyn.com/>

MIAC #122 Would you tell the population of the impending changes on Earth? <http://adapt2030.libsyn.com/miac-122-...>

Support ADAPT 2030 by Visiting Our Sponsors

ADAPT 2030 & My Patriot Supply
Taking the Fear out of Difficult Situations
2-Week Food Supply 92 servings
www.preparewithadapt2030.com

True Leaf Market Organic & Heirloom Seed

[ADAPT 2030 True Leaf Market Link](#)

ADAPT 2030 Amazon Grand Solar Minimum Book Store

<https://www.amazon.com/shop/adapt2030>

For the bi-weekly Grand Solar Minimum climate update newsletter from myself, David DuByne, (ADAPT 2030) jump over to oilseedcrops.org you can enter your email and sign up. Move your mouse around for about 10 seconds and this box will pop up.

Join ADAPT 2030 NEWSLETTER <http://www.oilseedcrops.org>



Grand Solar Minimum Climate Updates

Our Sun is repeating a 400 year cycle which will effect global crop yields. Food prices will increase everywhere on this planet.

Sign up now to understand how the Grand Solar Minimum will affect your life as It intensifies from this point forward?

ADAPT 2030

Mini Ice Age

Enter your email address here...

SUBSCRIBE

OIL SEED CROPS
FOOD & FUEL

www.oilseedcrops.org

*** Today's Story Links ***

<https://www.brighteon.com/channel/adapt2030>

NOAA Earth 4th Warmest on Record

<https://www.noaa.gov/news/2018-was-4th-hottest-year-on-record-for-globe>
<https://climate.nasa.gov/news/2841/2018-fourth-warmest-year-in-continued-warming-trend-according-to-nasa-noaa/>

Solar Cycle comparison <https://pbs.twimg.com/media/DwvCaFHxgAANzIC.jpg>

Cosmic ray comparison <https://pbs.twimg.com/media/Dz9troGXqAAjMUF.png>

*** ADAPT 2030 Social Media Links ***

PATREON www.patreon.com/adapt2030

YOUTUBE [ADAPT 2030 Mini Ice Age 2015–2035 Series on YouTube](#)

BITCHUTE <https://www.bitchute.com/hashtag/adapt2030/>

BRIGHTTEON <https://www.brighteon.com/channel/adapt2030>

STEEM <https://steemit.com/@adapt2030>

MINDS <https://www.minds.com/ADAPT2030>

MEDIUM <https://medium.com/@globalcooling>

FB <https://www.facebook.com/Miniiceage>

TWITTER <https://twitter.com/adapt2030>

GAB <https://gab.ai/ADAPT2030>