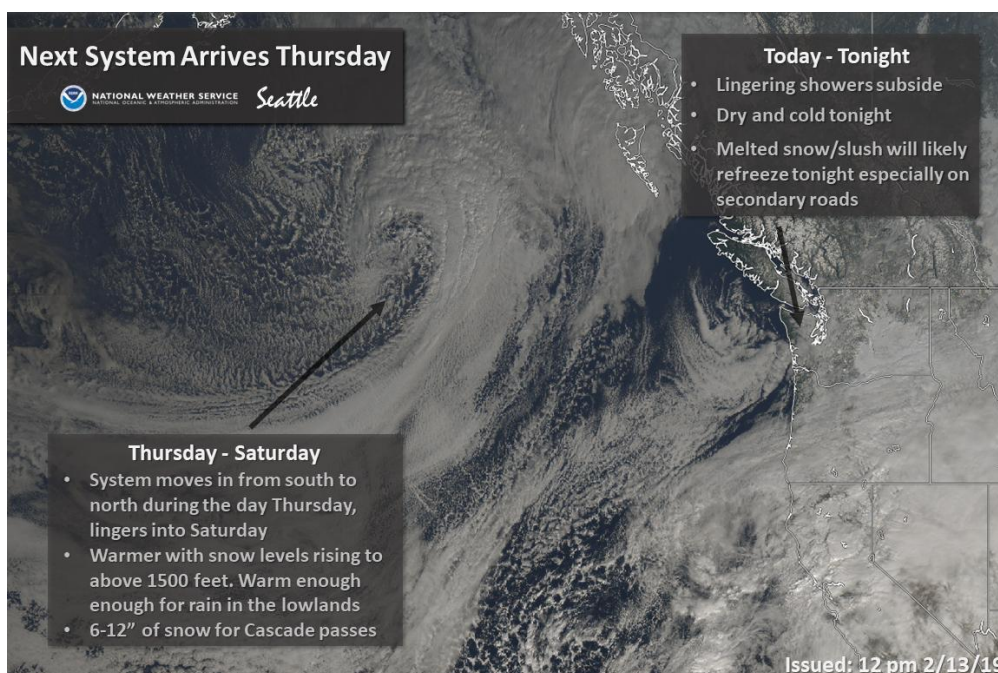


Hawaii Record, Snowfall, Cold and Wind Speed Four Islands



Let's start over here with a chart from the National Weather Service, Seattle. The arrows shown are pointing to the remnants of this massive winter storm that dumped all-time snow, cold and wind velocity / speed records across Hawaii. This is going to slam into the West Coast. BC, Washington and Oregon are on tap for this massive winter storm that's going to hit, yet again adding to those record snowfall years in 2018-2019 winter.



California is also looking forward for an Atmospheric River that could bring torrential rainfall and more record snowfall to the Sierra Nevada Mountains.

The Washington Post
Democracy Dies in Darkness

By **Matthew Cappucci** and **Jason Samenow**
February 11

‘Historic’ storm hurls huge waves and 191-mph winds at Hawaii; rare snow hits Maui

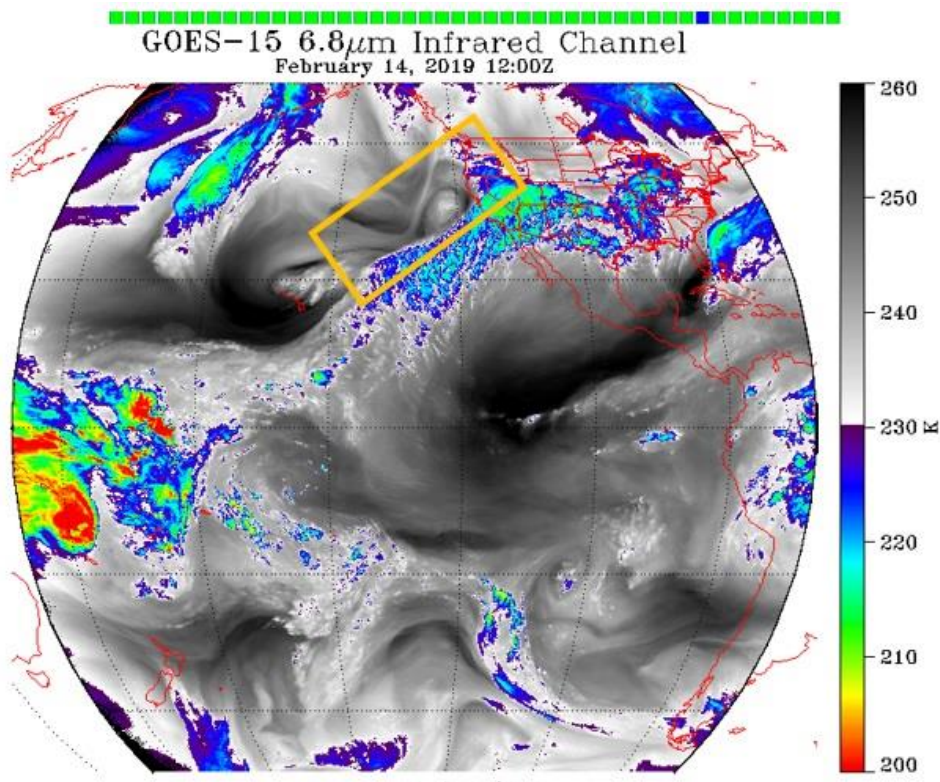
READ MORE

[An atmospheric river could bring torrential rainfall to California over several days this week](#)

[Record February snow hammers Seattle, and more is coming](#)

[The Southern Hemisphere is scorching: Unprecedented heat in Chile, Argentina and Australia](#)

Seattle is going to be hammered by more snow as well. So I thought, why don't we take a look at the infrared on GOES-15. The orange box shows where the remnants of the storm is tracking, and in what direction it's going to land on the West Coast. Massive storm is on tap over the weekend.



More importantly, the same words are being used again and again and again, to describe almost every winter event in the Northern Hemisphere that's taken place this winter so far. Such words as "historic storm", "unprecedented" and "first time ever" are now a normal adjective in today's weather news.

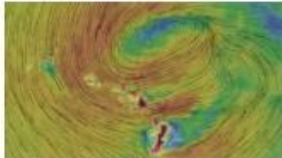
Honolulu National Weather Service - News



This Might Be The First Time This Hawaii State Park Has Ever Seen Snow

HuffPost via Yahoo News - 1 day ago

Melissa Dye, a meteorologist at the National Weather Service in Honolulu, told HuffPost that...



'Historic' storm hurls huge waves and 191-mph winds at Hawaii; rare snow hits Maui

Washington Post - 3 days ago

The storm, which the National Weather Service office in Honolulu described as "historic," began...



60 foot waves possible from Hawaii storm that's also brought snow

CBS News - 3 days ago

A potent winter storm lashing Hawaii has toppled trees onto cars, sent waves washing onto roadways...

[More news for Honolulu National Weather Service](#)

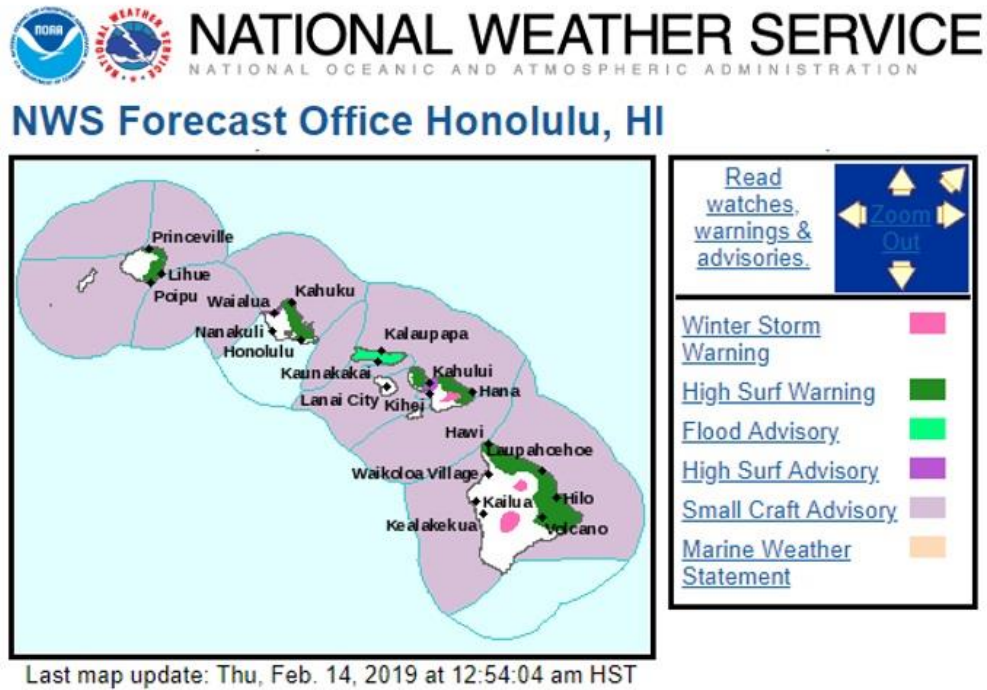
In the meantime, the incredible beauty of Maui, Hawaii's Haleakala Crater.



If you however look in the rear view mirror, you can see the snow cover that is at only 9,000 feet or so.



This is why the National Weather Service, Honolulu issued a winter storm warning for all the islands.



These storms were so fierce that they closed the beaches and parks across Maui Island.



You could actually see where the drifting snow was and the approximate snow depth from this image when several feet came down. It has been decades, plural, since they've seen snow up on Haleakala, especially at these depths.



This continuous winter warning kept Haleakala state parks closed.

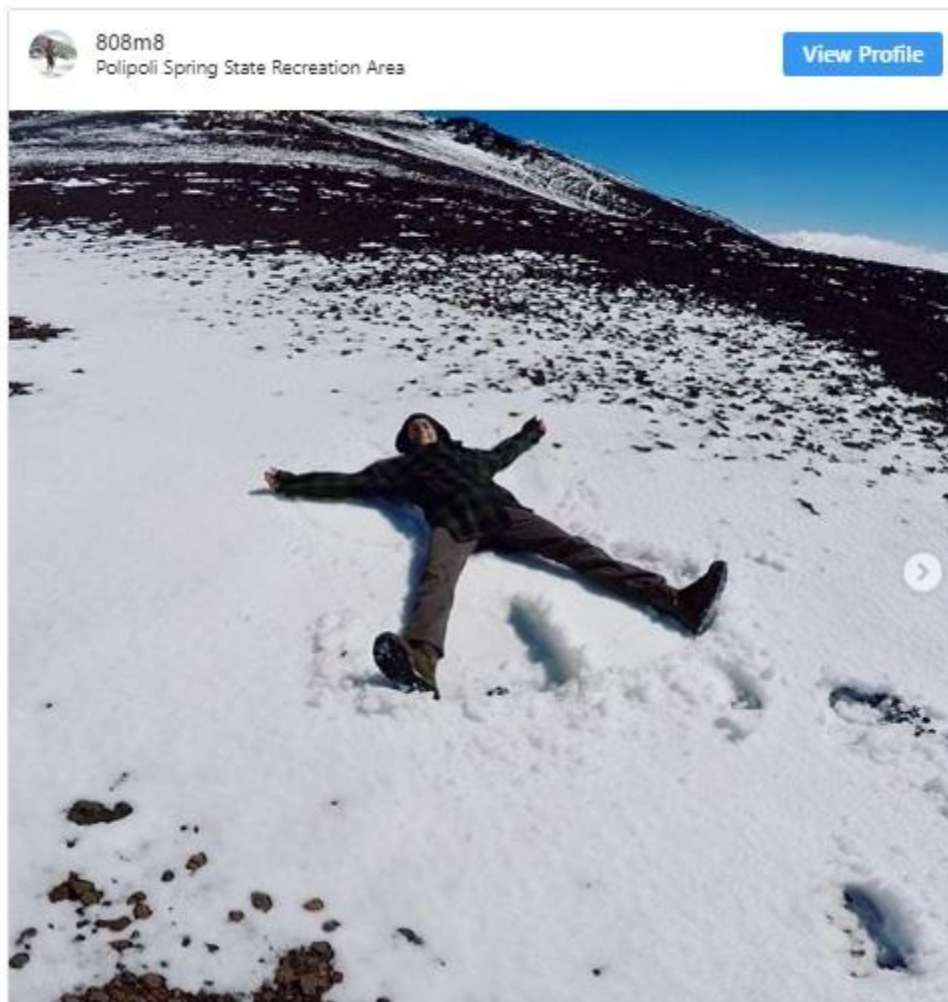


Look at how low that snowfall was, if that's 10,000 feet at the very peak from the observation station, we need to come down another 3,000 feet in elevation to around 7000 feet.



COURTESY DAVID SCHOONOVER

Case in point, Polipoli Spring State Park snowed down with 6, 500 feet.



This is one of the scenes up on the summit, all the way down to Polipoli.



This is yet another winter scene in the summit of Haleakala.

Haleakalā Remains Closed Through Friday



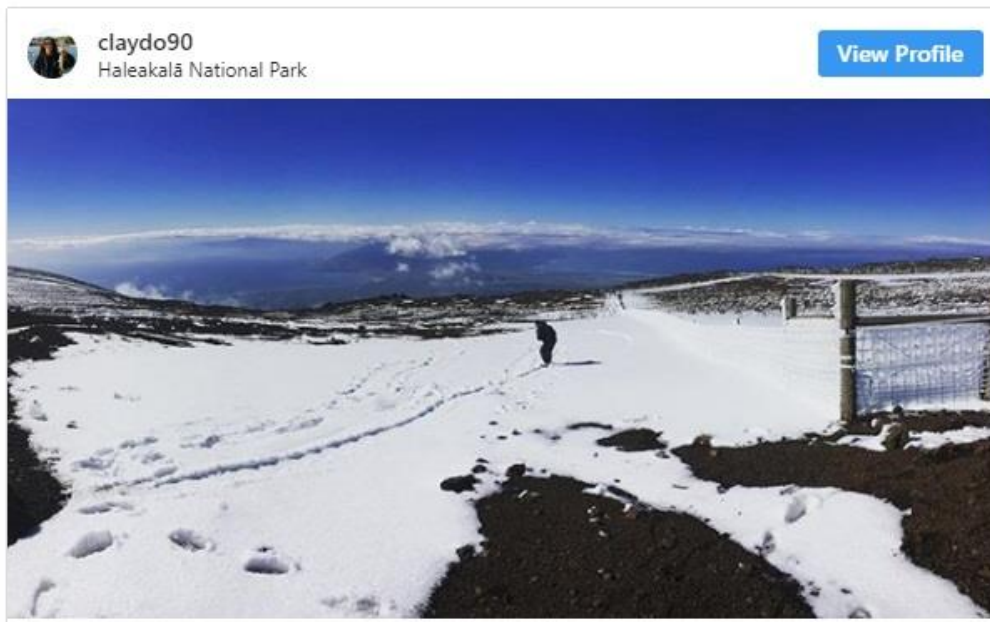
This winter scene was taken from Makawao, Maui Island, Hawaii.



This is also among the great shots taken from helicopter tours around Maui. I encourage you to look at the videos to see snow depths as helicopters fly around the summit. I listed all the links at the end of the article.



Similarly, this image shows the way toward Polipoli State Park. So, what is so special about this place, and where is it anyway?



First of all, Polipoli Spring State Park doesn't even measure snowfall because it doesn't snow there. This is the first time this State Park has ever seen snow, since the 1800's. That's not a dusting that you see in the image, it's several inches of snow, which is enough to obscure the roadway.



This Might Be The First Time This Hawaii State Park Has Ever Seen Snow

YAHOO!
NEWS

As a winter storm collided with the Aloha State over the weekend, a rare snowfall turned the much lower [Polipoli Spring State Park](#) on Maui into a wintry wonderland.

Melissa Dye, a meteorologist at the National Weather Service in Honolulu, told HuffPost that Haleakala's summit, located 3,800 feet higher than Polipoli, saw 4-foot drifts of snow, though park rangers were unable to measure it due to strong winds.

The National Weather Service [doesn't typically measure snowfall](#) at Polipoli.

The first snow shots are of the green area in the map of Haleakala National Park. If you go down the slope, you're going to find Polipoli. The national park summit altitude is 10,000 feet, while Polipoli is around 6,500 feet or so.



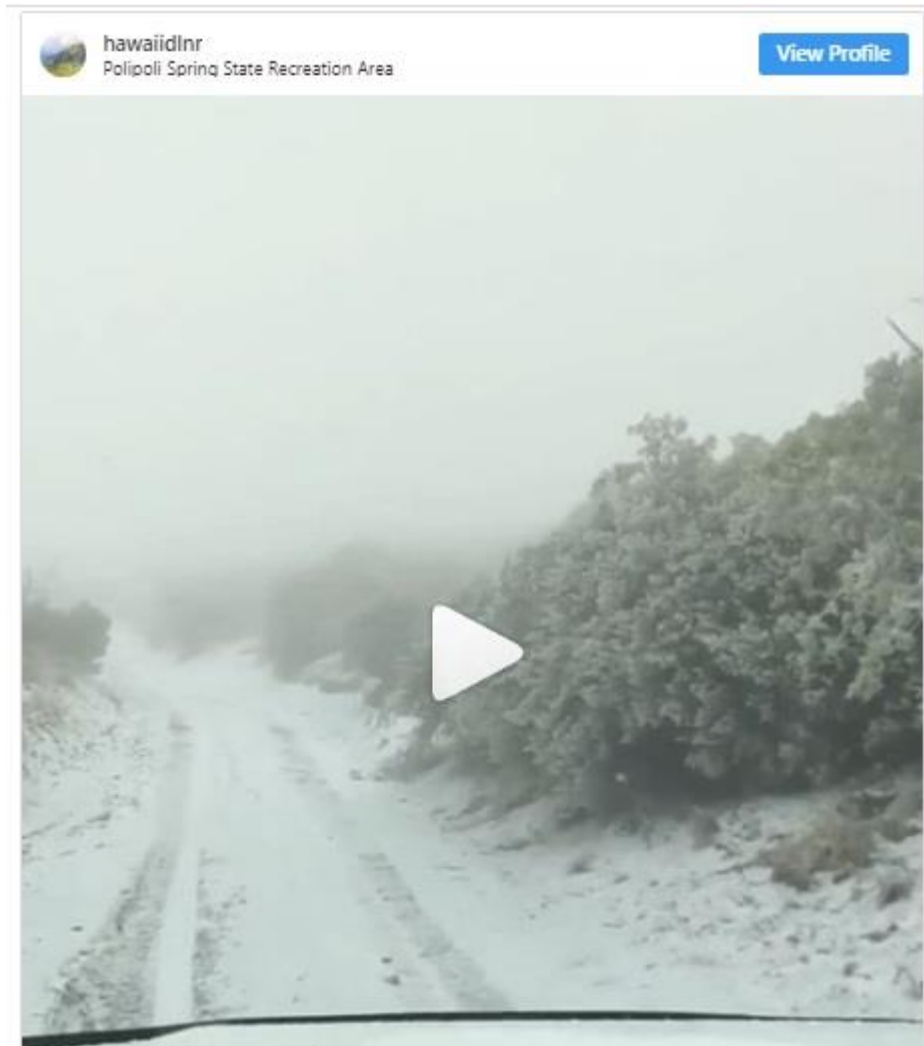
These winter weather advisories on February 10th and 11th were very rare. In fact, this was the first time that snow was seen in this park.



But there was a report Sunday of snow falling at Polipoli State Park, approximately 6,200 feet elevation, on the slope of Haleakala.

According to Hawaii's Department of Land and Natural Resources' Division of State Parks, it may have been the first time snow was seen in a Hawaii state park, possibly the lowest-elevation snow of record in Hawaii.

This was why, many people drove up there just to take images of the snow, and when I say snow, I'm talking about 6,500 feet of snow in Hawaii, particularly in Maui.



This was really so rare that it's yet another check on the box indicating that the Grand Solar Minimum is intensifying. All these events that we haven't seen in literally 400 years, are now starting to come back.



What's most interesting about all these images is that you have to go to social media to actually get these snapshots because a lot of these are not featured in the corporate mainstream media.



CBS Evening News @CBSEveningNews · Feb 12

WATCH: Rare **snow** hits **Maui, Hawaii** as historic storms hurl huge waves and 191 mph winds across the islands. **Snow** may have fallen at the lowest elevation ever observed in the state [cbsn.ws/2Go8ILH](https://www.cbsn.ws/2Go8ILH)



They only talk about beautiful images like this image in the CBS news. I even watched the report where they said there was just a dusting of snow on Haleakala that they haven't seen in decades. That's it, and they moved on to the next story.



Another fascinating fact about all these was the lowest altitude snow was ever recorded in 1952 was 7,500 feet. Now it's at 6,200 feet. We're really heading into the Grand Solar Minimum, yet somehow this is just an outlier from CO2.

Snowfall in Hawaii

SAUL PRICE, *Pacific Supervisory Office, U. S. Weather Bureau, Honolulu*

ALL of Hawaii's three highest mountains—Mauna Kea (13,796'), Mauna Loa (13,680') and Haleakala (10,025')—do experience falls of snow from time to time, especially during the cooler half-year (October to April).

Our records show the following measured maximum depths and lowest elevations reached for the period 1915-1958, inclusive.

	Depth	Where measured	Date
Mauna Loa	1 foot	10,000-foot level	9 Feb. 1922
Mauna Kea	Not given, but probably about same as Mauna Loa		
Haleakala	Five inches	Summit	8 Jan. 1940

These are all almost certainly much less than actual maximum depths since they represent only actual measurements (rather than estimates) and were made almost by chance, since Mauna Kea and Mauna Loa, especially, are not inhabited above about 5000 to 6000 feet, and only very infrequently visited at higher elevations. (The U. S. Weather Bureau's Mauna Loa Observatory at 11,150 feet has been in existence only since July 1957.)

	Lowest elevation at which snow reported	Date
Mauna Kea	6500'	7 Mar. 1952
Mauna Loa	6500'	1 Jan. 1954
Haleakala	7500'	2 Mar. 1952

These recent estimates were obtained from commercial inter-island flights. One also finds in the record such notes as the following:

Mauna Kea and Mauna Loa, 16 Feb. 1936: "Unusually heavy fall of snow to far below 10,000 foot level."

Mauna Kea and Mauna Loa, 25 Feb. 1935: "Thick covering of snow."

Island of Maui, 9 Feb. 1916: "Snow flood on Maui" (apparently from melting rains on the Haleakala snow pack).

Mauna Loa, 6 April 1952: "Snow drifts two feet deep at 11,000 foot level persisted to the middle of the month."

Snow pellets were reported on Oahu at sea level on 4 March 1953, but these occurred during widespread thunderstorms and were accompanied by small hail.

Tables showing the monthly frequency of snow occurrences on Mauna Loa and Mauna Kea, and Haleakala are given below for the same 44-year period:

	J	F	M	A	M	J
Mauna Loa	27	26	22	15	10	6
Mauna Kea						
Haleakala	9	12	5	0	0	0
	J	A	S	O	N	D
Mauna Loa	4	6	3	10	19	27
Mauna Kea						
Haleakala	0	0	1	1	1	5



Brian Brettschneider
@Climatologist49

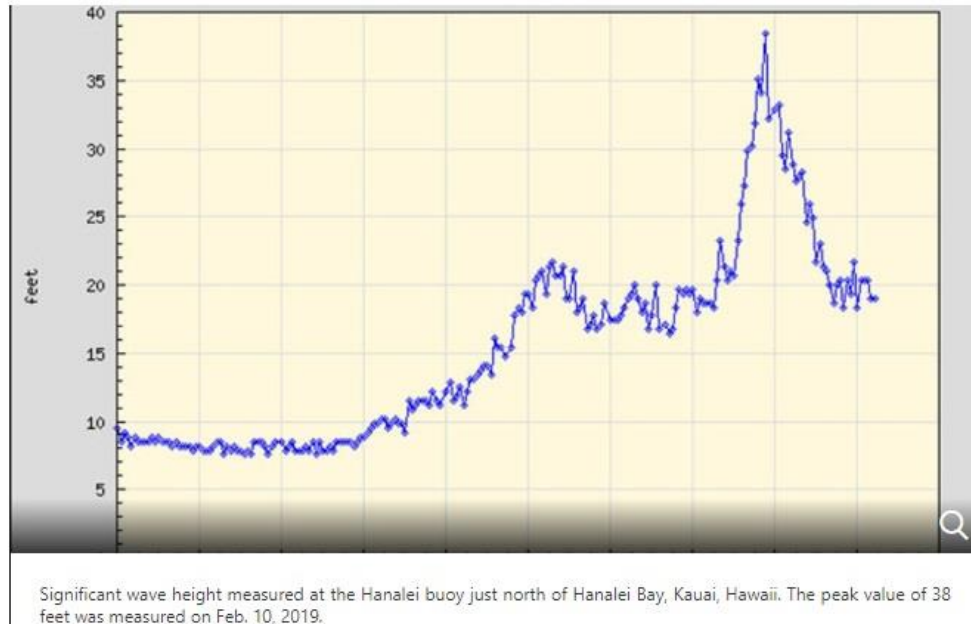


According to this 1962 issue of Weatherwise, the lowest known snow on Haleakala (Maui Island) was 7,500' in 1952. Yesterday, snow was observed as low as 6,200'. H/T @firebomb56

♡ 156 7:06 AM - Feb 12, 2019

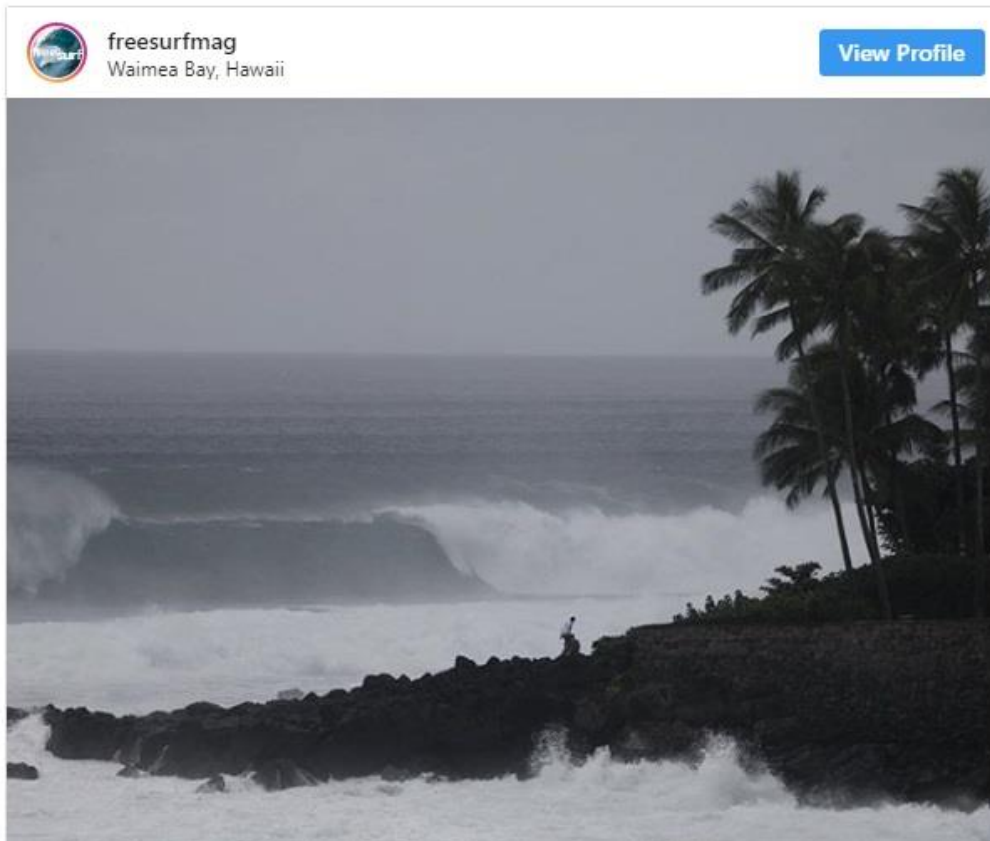
You would expect that due to massive winds and that ultra-deep low, that there would be incredible wave heights associated with this storm. You are looking at 40-foot from the back, 80 feet on the wave face.

NWS-Honolulu also noted significant wave heights at the Hanalei buoy, located just north of Hanalei Bay and the north shore of Kauai, reached a record height of 38 feet during the storm.



Measuring waves in Hawaii, you always measure from the back, at least if you're out in the lineup and somebody asks you how high was the surf was, you'd say something like "head high from the back or double-overhead in the front"

Anyhow, Waimea Bay is also closing out, but if you look at this set stretching to the horizon, if you're caught inside that kind of scene, you'd better hold your breath.



Along with Haleakala, the Big Island Summits also issued the same winter storm warning.

 **National Weather Service** weather.gov
Watches, Warnings & Advisories 

Local weather forecast by "City, St" or zip code

Winter Storm Warning

URGENT - WINTER WEATHER MESSAGE
National Weather Service Honolulu HI
401 PM HST Wed Feb 13 2019

...WINTER STORM WARNING FOR **HALEAKALA AND THE BIG ISLAND SUMMITS...**

.Very cold air aloft will move over the islands bringing wintry conditions to the highest peaks of Haleakala and the Big Island through Thursday. Expect periods of snow, with icy roadways and very cold conditions.

HIZ028-141600-
/O.CON.PHFO.WS.W.0001.000000T0000Z-190216T0400Z/
Big Island Summits-
401 PM HST Wed Feb 13 2019

...WINTER STORM WARNING REMAINS IN EFFECT UNTIL 6 PM HST FRIDAY...

Again, the forecasters called this an unprecedented event. Extreme winds and snow battered Mauna Kea Summit with a 191 mile-per-hour wind gusts. This is an all-time record, and the highest winds ever recorded.

The Washington Post
Democracy Dies in Darkness

By **Matthew Cappucci** and **Jason Samenow**
February 11

‘Historic’ storm hurls huge waves and 191-mph winds at Hawaii; rare snow hits Maui

Forecasters “are calling this an **unprecedented event** and we concur that we rarely if ever have seen the combination of record high onshore waves, coupled with gale force winds,” said **Sam Lemmo**, administrator of Hawaii’s Department of Land and Natural Resources (DLNR).

The storm’s most extreme blow was generated on the Big Island’s towering peak of Mauna Kea, **where a 191-mph wind gust** blasted the mountain summit at 4:40 p.m. local time Sunday.

Even park workers there were saying that they have gotten 150 mile-per-hour wind at the summit once during winter or so, but never 191 mile-per-hour. This was so unusual NWS even called a rare thunderstorm warning for Kauai. So in all, Big Island, Maui, Oahu and Kauai were all involved in this storm never before seen type of storm.

The Washington Post
Democracy Dies in Darkness

By **Matthew Cappucci** and **Jason Samenow**
February 11

‘Historic’ storm hurls huge waves and 191-mph winds at Hawaii; rare snow hits Maui

“That’s the strongest wind gust I’ve ever seen up there,” said **Jon Jelsema**, senior forecaster at the Weather Service office in Honolulu. “We tend to get a gust **maybe to 150 mph once a winter or so, but never 191 mph.**”

Hawaii saw a mixed bag of bizarre precipitation over the weekend. Several inches of snow fell on Haleakalā, a shield volcano in East Maui — something Jelsema described as **“very unusual.”**

The vigorous storm triggered **rare severe thunderstorm warning** for southern Kauai Saturday night.

To put the cherry on top, the State's all-time record low for Hawaii was set during this storm, with a temperature of -11.1 degrees Celsius for Mauna Kea Summit.

Hawaii Storm Might Have Set the State's All-Time Record Low

MKWC
mauna kea weather center

Current Conditions
Temp -11.4 C
RH 54 %
Wind WSW 34 mph
Road Closed

Observations

STN	DATE HST	TIME HST	TEMP °C	DPPT °C	RH %	WSPD mph	PK WSPD mph	WDIR dir	PRES mb	RAIN mm	PW mm	Seeing arcsec	Road Condition	Trends
UH88														
CFHT/GEM														
UKRT	02/11/19	01:02	-11.4	-20.2	54	34		WSW	596				Closed	Meteogram
JRTF	02/11/19	01:06	-12.8		62	0	0	N						Meteogram
SUBARU	02/11/19	01:03	-11.6		66	0	0	SSW	603	0				Meteogram
KECK	02/11/19	01:00	-11.2		76				600					
JCMT	02/11/19	01:02	-10.4	-18.7	56	36		S	607					Meteogram
SMA														
VLBA														
HP														
UNITS	UTC HST		°C K F		%	mph Kts mps		dir	mb	mm	Tau mm		arcsec	

A screengrab of temperatures atop Mauna Kea, Hawaii, just after 1 a.m. HST, Feb. 11, 2019.

If the temperatures early Monday are deemed accurate, the readings from at least four stations on Mauna Kea would exceed the official all-time state record low in Hawaii of 12 degrees (-11.1 degrees Celsius) also set atop Mauna Kea on May 17, 1979.

Anyway, maybe you want to ask if there's Hawaiian word for snow. The answer is, "yes". It's is *hau*, snowman is *ka hau*, cold is *anuanu*, freezing cold is *ke anu anuanu*.

The
Mercury
News

What's Hawaiian for Brrrr? Snowfall on Maui...

Snow: hau

Snowman: ka hau

Cold: anuanu

Freezing cold: ke anu anuanu

Way too cold for Maui: ke'ano ma'amau no ke kau

As for the Southern Hemisphere, Mount BawBaw dipping into the freezing range in summer. Media says it's the warmest ever down in Australia, except for the freezing cold temperatures and below normal temperatures across Melbourne and in different areas of the country. I have to *agree*, it's quite cold for summertime. Thanks for the link, Bobby.


Bobby.
Moderator
★★★★★
Offline


Australian Politics
Posts: 35437
Melbourne
Gender: ♂

Re: New Ice Age..
Reply #5766 - Feb 12th, 2019 at 6:59pm

Summertime on Mount Baw Baw - next to Melbourne:
<http://www.weatherzone.com.au/vic/w-and-s-gippsland/mt-baw-baw>

Mt Baw Baw Forecast
Tonight -1°C
Tomorrow 7°C
Now 1.9°C steady
Updated at 19:50 EDT



It's down to 11 tonight in Melbourne:
<http://www.bom.gov.au/vic/forecasts/melbourne.shtml>

This seems quite cold for summertime!

Thanks for reading, I hope you got something out of the article. If you like more information like this, I produce the tri-weekly Mini Ice Age Conversations podcast, 30 minutes of an in depth analysis on the GSM you can take on the go.

Mini Ice Age Conversations Podcast

iTunes: <https://itunes.apple.com/us/podcast/a...>

Soundcloud: <https://soundcloud.com/adapt-2030>

Libsyn: <http://adapt2030.libsyn.com/>

For the bi-weekly Grand Solar Minimum climate update newsletter from myself, David DuByne, (ADAPT 2030) jump over to oilseedcrops.org you can enter your email and sign up. Move your mouse around for about 10 seconds and this box will pop up.

Join ADAPT 2030 NEWSLETTER <http://www.oilseedcrops.org>

The mainstream media did not report the exact record-breaking storm across Hawaii because it doesn't fit with the Global Warming model so to keep this type of information flowing,

Support ADAPT 2030 by visiting our sponsors

ADAPT 2030 & My Patriot Supply
2-Week Food Supply 92 servings
www.preparewithadapt2030.com

Taking the Fear Out of Difficult Situations
[ADAPT 2030 True Leaf Market Link](#)

ADAPT 2030 Amazon Grand Solar Minimum Book Store
<https://www.amazon.com/shop/adapt2030>

*** Today's Story Links ***

Maui Winter Storm <http://mauiwatch.com/2019/02/winter-storm-to-close-several-maui-parks/>

<http://mauiwatch.com/2019/02/maui-county-damage-assessments-recovery-begin-in-severe-winter-storms-wake/>

<http://mauiwatch.com/2019/02/winter-storm-watch-issued-through-thursday-night/>

Honolulu Weather Service <https://www.prh.noaa.gov/hnl/https://forecast.weather.gov/wwamap/wwatxtget.php?cwa=hfo&wwa=winter%20storm%20warning>

This Might Be The First Time This Hawaii State Park Has Ever Seen Snow <https://www.yahoo.com/huffpost/might-first-time-hawaii-state-015017475.html>

<https://pbs.twimg.com/media/DzLas2YUwAUfA21.jpg>

Historic' storm hurls huge waves and 191-mph winds at Hawaii https://www.washingtonpost.com/weather/2019/02/11/historic-storm-hurls-huge-waves-mph-winds-hawaii-rare-snow-hits-maui/?noredirect=on&utm_term=.f2b01f6e6c2e

Hawaiian language for cold and way too cold <https://www.mercurynews.com/2019/02/11/whats-hawaiian-for-frost-snowfall-on-maui-could-set-a-record/>

Snow closes Haleakala National Park and creates social media buzz <https://www.staradvertiser.com/2019/02/11/breaking-news/snow-drifts-close-haleakala-national-park-and-create-a-buzz-on-social-media/>

Hawaii Storm Might Have Set the State's All-Time Record Low <https://weather.com/news/news/2019-02-11-hawaii-storm-record-cold-maui-snow>

Haleakalā Remains Closed Through Friday <http://mauiNOW.com/2019/02/13/haleakala-remains-closed-through-friday/>

Australia cold in Summer <http://www.ozpolitic.com/forum/YaBB.pl?num=1464603949/5760#5767>

Fireball sightings <https://www.amsmeteors.org/fireballs/>

Total fireballs through 2016 <https://yowusa.com/2016/06/planet-x-signs-9/totalfireballs-jan-thru-may2009-2016/>

All fireball log reports <https://www.amsmeteors.org/fireballs/fireball-report/>

Haleakalā image sunny https://pbs.twimg.com/media/DzXCKVsW0AAo_Ww.jpg

GOES 15 Pacific satellite loop <https://www.weather.gov/satellite?image=vv&hours=24#vis>

<https://www.weather.gov/satellite?image=vv&hours=24#vis>

http://rammb.cira.colostate.edu/ramsdis/online/goes-west_goes-east.asp

*** ADAPT 2030 Social Media Links ***

PATREON: <https://www.patreon.com/adapt2030>

YOUTUBE [ADAPT 2030 Mini Ice Age 2015–2035 Series on YouTube](#)

BITCHUTE <https://www.bitchute.com/hashtag/adap...>

BRIGHTON <https://www.brighteon.com/channel/adapt2030>

STEEM <https://steemit.com/@adapt2030>

MINDS <https://minds.com/ADAPT2030>

MEDIUM : <https://medium.com/@globalcooling>

FB <https://www.facebook.com/Miniiceage>

TWITTER : <https://twitter.com/adapt2030>

GAB <https://gab.ai/adapt2030>

STEEM: <https://steemit.com/@adapt2030>