

Global Warming = All Time Record Cold?

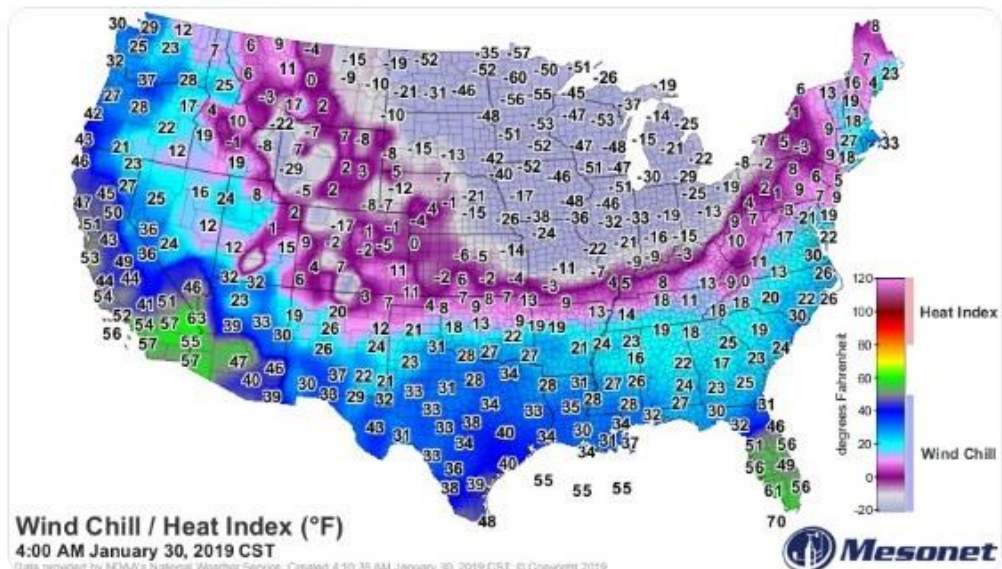


In January 2019, all-time record cold swept across the United States, which broke the all-time low temperature records in some of the coldest places in America. Many locations were at 60 degrees Fahrenheit below zero, and others were at 45 degrees Fahrenheit below zero.



severe-weather.EU @severeweatherEU · 2h

Brutally cold morning in the northern United States today, Bemidji, Minnesota reporting a windchill temperature of -60F or -51 °C. Extreme cold with around 50F / -45 °C windchills also further south across Dakotas, Iowa, Wisconsin and N Indiana! Map by @mesonet



I stated then, that in about a week, a tidal wave of articles trying to explain that Global Warming is causing this record cold will come out. Sure enough, one of my subscribers sent me this link. This was a great find. I'm so glad that he pointed me in the right direction, *Polar Vortex: How the Jet Stream and Climate Change Bring on Cold Snaps*.

Let me point out that “cold snap” is not a correct description of that last event, an “all-time record cold wave” would be a better description. Anyway, in the news says, *It might seem to be counterintuitive, but global warming plays a role in blasts of bitter record cold weather.* I say, that is what “counterintuitive” mean, because I just don't understand how that happens. Thermodynamically, it makes no sense.



BY BOB BERWYN, INSIDECLIMATE NEWS
FEB 2, 2018

Polar Vortex: How the Jet Stream and Climate Change Bring on Cold Snaps

It might seem counterintuitive, but **global warming plays a role in blasts of bitter cold weather.** The reason: It influences the jet stream. Here's how.

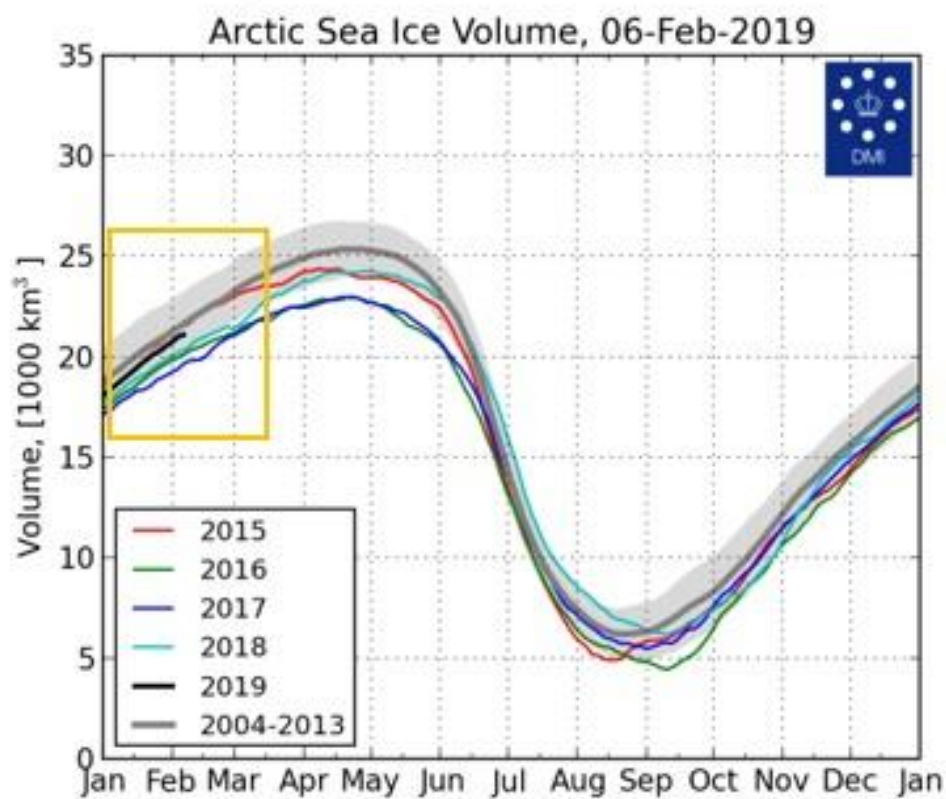


The article went on, trying to explain that because of melting sea ice and warming of the Arctic, more open water leads to feedback loops which creates a wavier jet stream.

What does Arctic warming have to do with it?

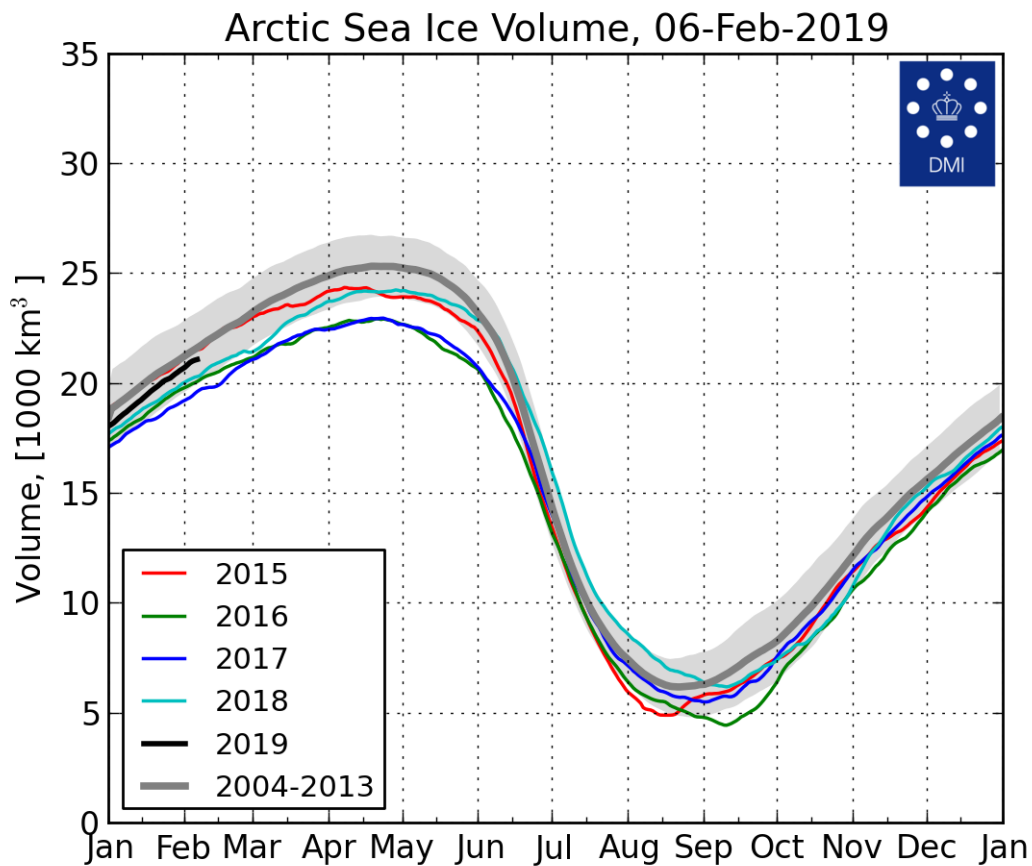
Rutgers University climate scientist Jennifer Francis has found "**robust relationships**" between Arctic warming and a wavier jet stream.

Melting sea ice speeds up the warming of the Arctic because open water absorbs more heat. And that, in turn, leads to even more sea ice melting. In that vicious cycle, Arctic temperatures are rising twice as fast as the global average. And that's reducing the temperature contrast that's one of the jet stream's main engines, Francis said.



Looking at Arctic sea ice concentrations for that time, you can see the black line is where we are, that's in 2019. So if the corporate media is claiming that the sea ice is melting and causing more open water, which it shouldn't because it's winter anyway, where are we on the sea ice, compared to the last few years?

We are right at the 2004 - 2013 average. So I don't know where they get this premise of "melting sea ice" because the Arctic is actually gaining ice. This is really an inconvenient fact, but nonetheless...



Then the article continued showing an analysis of the late December 2017-early 2018 East Coast event which they called a “cold snap”. Again, that was an all-time record cold and an all-time record snowfall event. They quickly analyzed it and said: The cold spells aren't getting as cold as they could because of Climate Change and Greenhouse Gases. Furthermore, it was said that due to Arctic amplification, cold air that's coming down south was not as cold as it used to be. Really? It was the coldest ever recorded.



BY BOB BERWYN, INSIDECLIMATE NEWS

FEB 2, 2018

Polar Vortex: How the Jet Stream and Climate Change Bring on Cold Snaps

What questions still remain?

A team of climate experts who conducted a fast **analysis** of the late December 2017-early 2018 East Coast cold snap said they didn't find a link to Arctic temperature or sea ice conditions for that particular event, though the authors noted that their work was a quick analysis and not an in-depth modeling study. They did find that **cold spells aren't as cold as they would be in a climate unaltered by greenhouse gases.**

"Because of Arctic amplification, the cold air coming south is not as cold as it used to be," said Geert Jan van Oldenborgh, a Dutch climate scientist involved in the World Weather Attribution analysis. The decline in cold spells, he said, is "the big signal."

Let me bring you to AccuWeather's article. *By the numbers: Midwest US endures coldest temperatures, ever.* This talked about some of the coldest places during the winter in the United States that smashed their all-time cold records, like Illinois, Wisconsin and Minnesota.

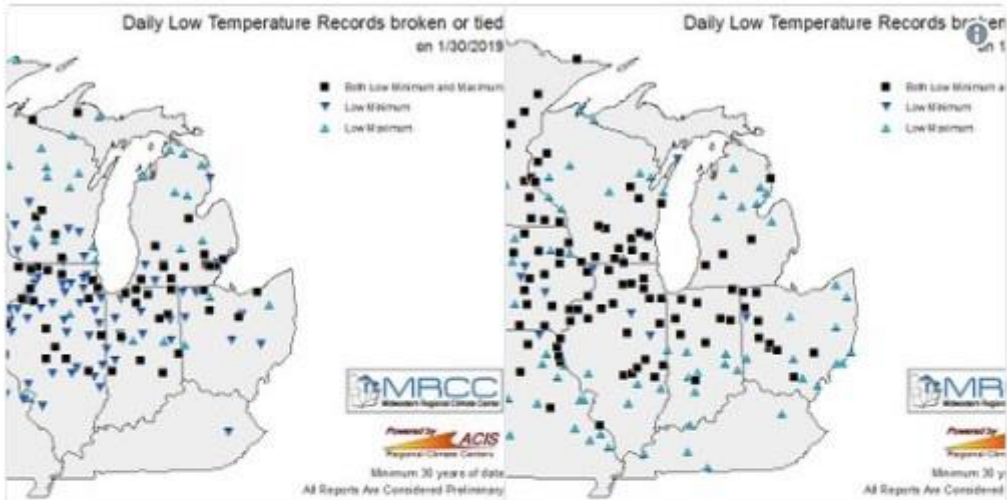
January 31, 2019

By the numbers: Midwestern US endures worst of polar vortex, all-time record lows broken

Records have been shattered as the polar vortex unleashed the harshest cold in years on the midwestern United States during the final days of January.

The low of 38 below zero recorded at Mt. Carroll, Illinois, is being reviewed by a state climate extremes committee to determine if the **Illinois state record low** was broken on Thursday morning. The current record is 36 below zero that was set near Congerville on Jan. 5, 1999.

Even before they analyzed everything with a final tally, they still had 340 daily lows and 340 daily low maximum temperatures broken or tied in the Midwest. The final tally was completed about a week later because they were looking for independent stations to add thermometer data. These happened in just that single polar vortex. So it is not getting warmer, it is getting cooler in the extremes!



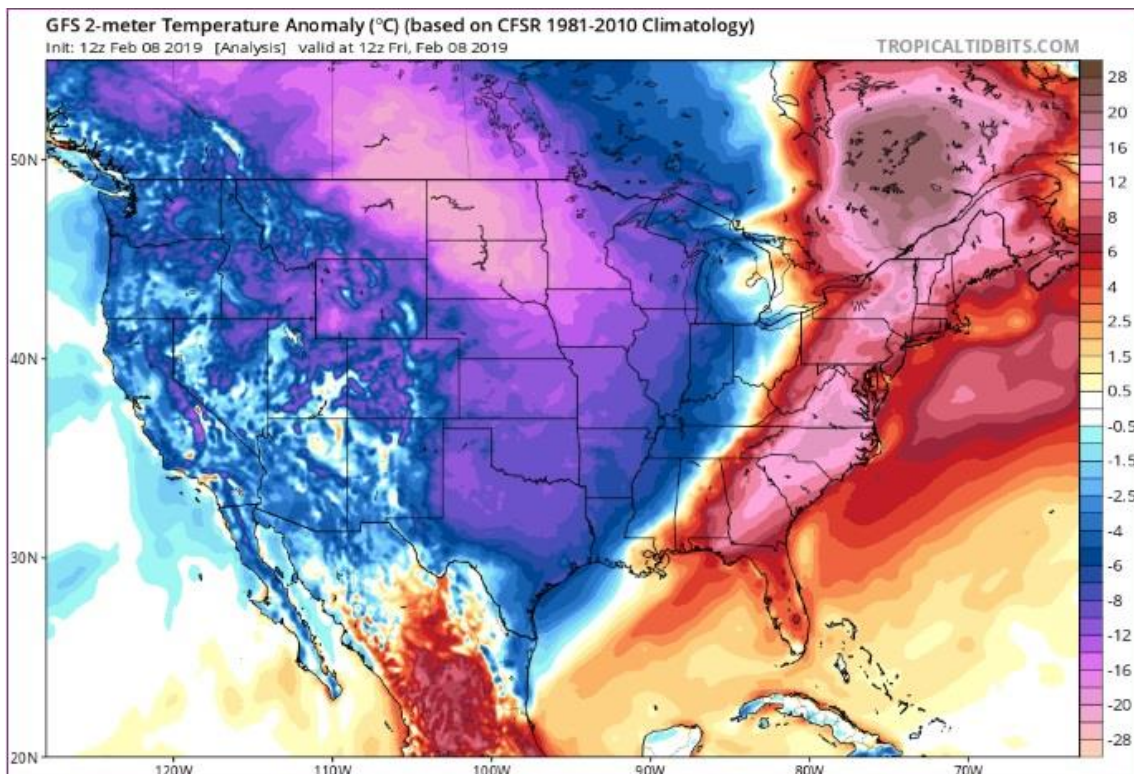
MRCC
@MidwestClimate



More than 340 daily low minimum and 340 daily low maximum temperature records were broken or tied across the Midwest over the past two days from this Arctic outbreak. Several of these stations also set all-time low minimum and maximum temperature records. #PolarVortex19

♡ 42 4:25 AM - Feb 1, 2019

Case-in-point, another polar vortex blasted all the way down to Texas with average temperatures during this event around 16 to 20 degrees Celsius below the normal.



In relation to this, some astrophysicists are forecasting that we are going into a Grand Solar Minimum, which means that our Sun is declining in its activity state. This will usher in changes in our jet streams, due to Earth's magnetosphere weakening.

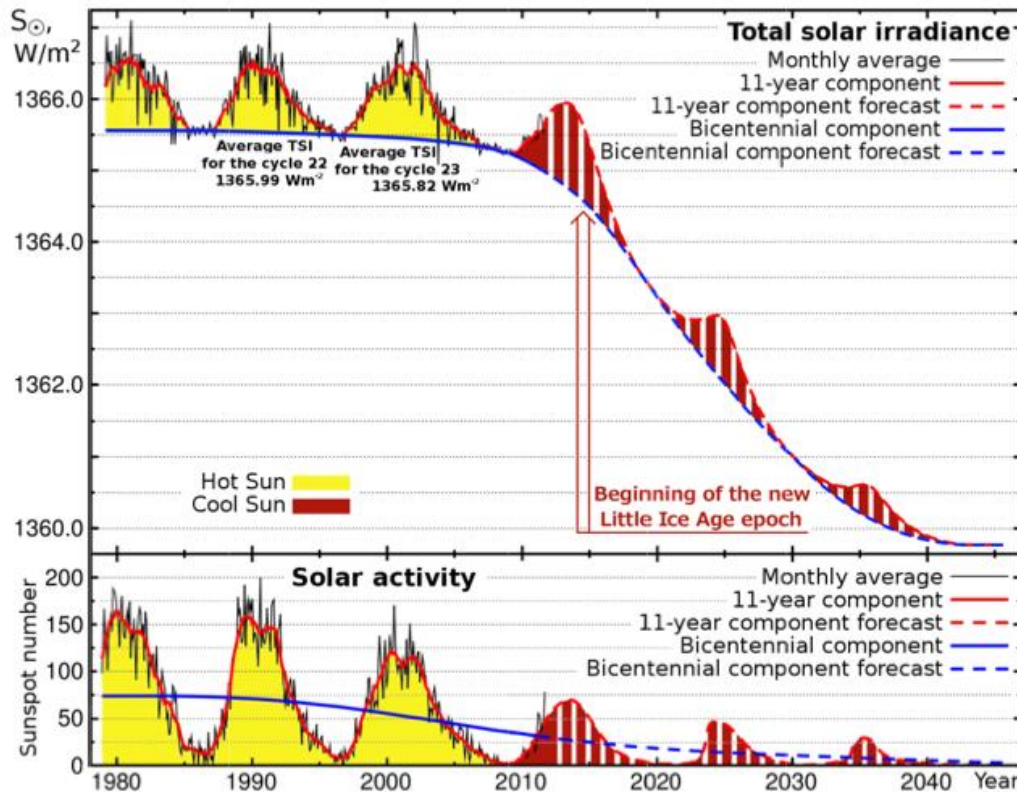


Figure 3. Variations of both the TSI and solar activity in 1978-2011 and a forecast of their variations in cycles 24-26 (up to the year 2045)

(BELOW) This was the forecast put out a couple of years ago as to when we'd expect this amplification. The arrows shown in the chart are broken down in yearly increments, which show the first wave of two that we're about to experience. We already moved from the yellow portion of the chart to that green portion, and that's where the amplification in cold events is expected on our planet this year. There was another gigantic uptick observed at the beginning of 2019 and another forecast uptick observed from 2020 to 2021.

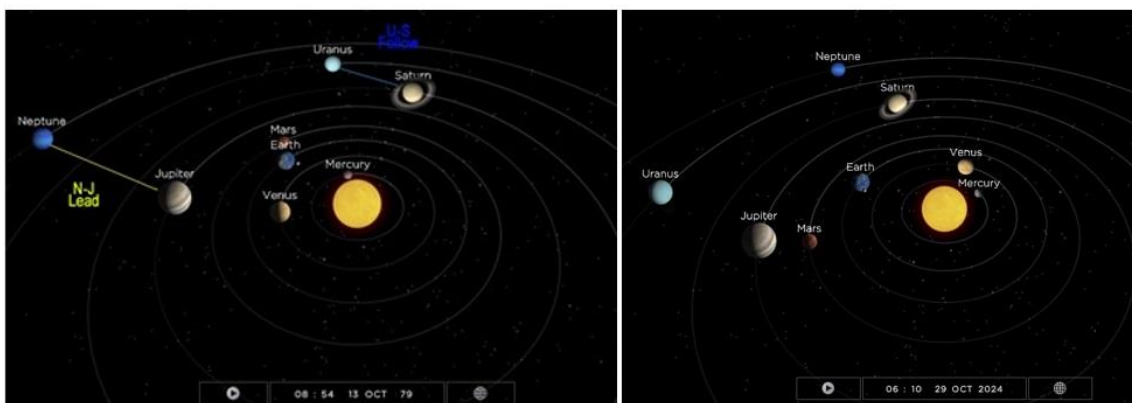
Some of these facts were missed in the corporate media rush to say that winters are going to be warmer, while the jet streams were affected by you, bad humans, for producing too much CO2, not the Sun.

The shift of our global weather patterns are set to amplify 2x from July-Dec 2017, and from 2018-2019 a 4x shift, with another jump up as the spread widens to 6x in 2019. (I explain this in detail on pages 38-41)



David DuByne ADAPT 2030 Channel YouTube | Mini Ice Age Conversations Podcast on Soundcloud / Stitcher Radio / iTunes

The article never even pointed out anything about planetary geometry in the explanation. But the fact is, these gas giants have electromagnetic effects on our earth and on our Sun. This is an electromagnetic solar system that we're in, so when you look at the left image below showing the 79 AD planetary geometry, you can see these gas giants and their relation to the Earth. We see some exact match ups on the 2023-2024 planetary geometry shown on the right image. If you notice, they are nearly identical. See how those gas giants create a seemingly square pattern, with the Earth at the center. The Earth then is affected in so many ways, not only by our Sun but also by the gas giants on the outer bands.



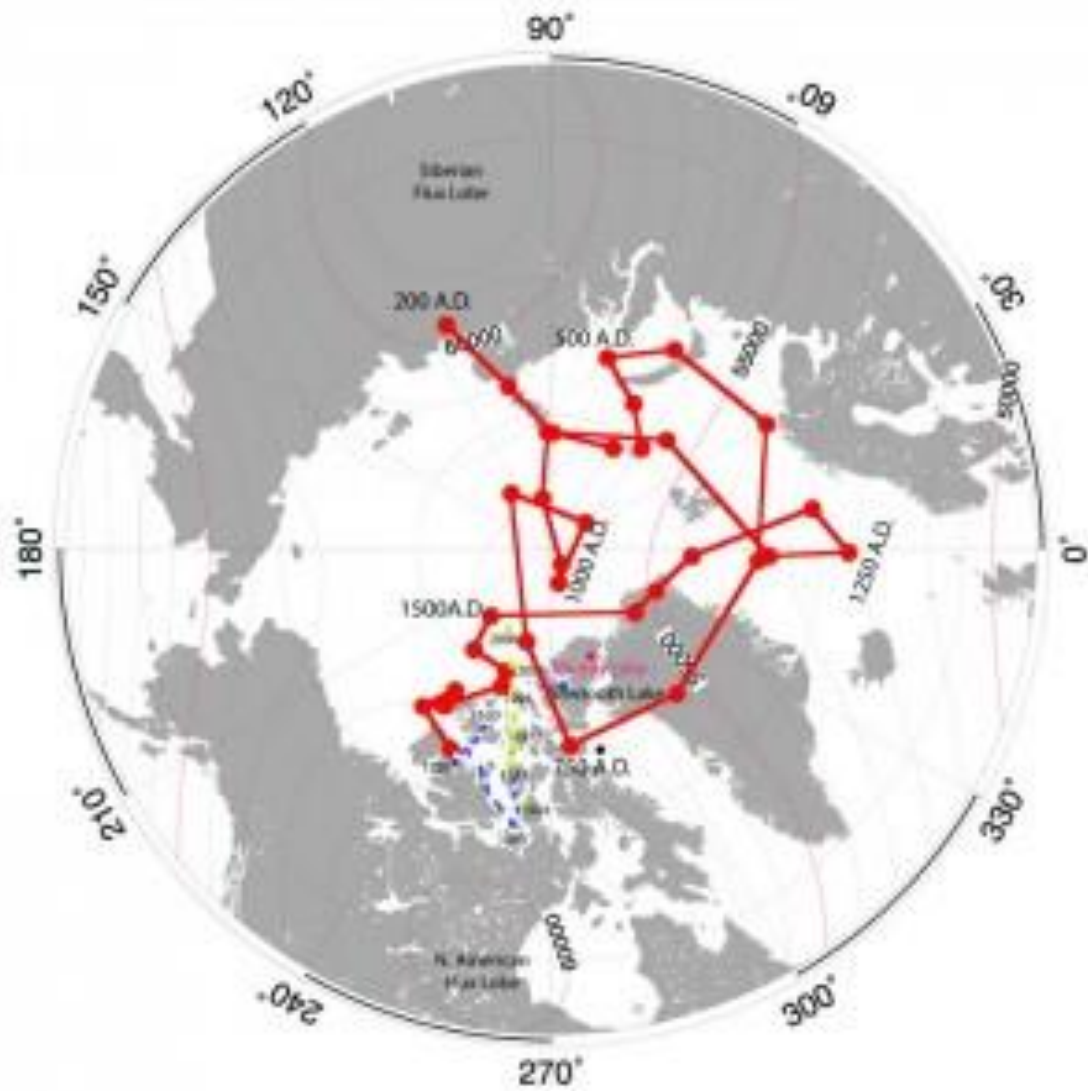
Comparison 79 A.D planetary geometry aside 2023-2024 A.D alignment
 Grand Solar Minimum Maximum cold period for Wave 1 of 2
 By David DuByne - ADAPT 2030 YouTube – Mini Ice Age Conversations Podcast

In like manner, magnetic poles were not mentioned in the article either. The magnetic poles are wandering, as it was called, that's why the GPS needed to be re-calibrated this year. Also, there are so many runways that needed to be re-demarcated as to which direction, because the magnetic north pole is wandering. You might think this is frightening and scary, but you shouldn't, because this is a natural phenomenon.

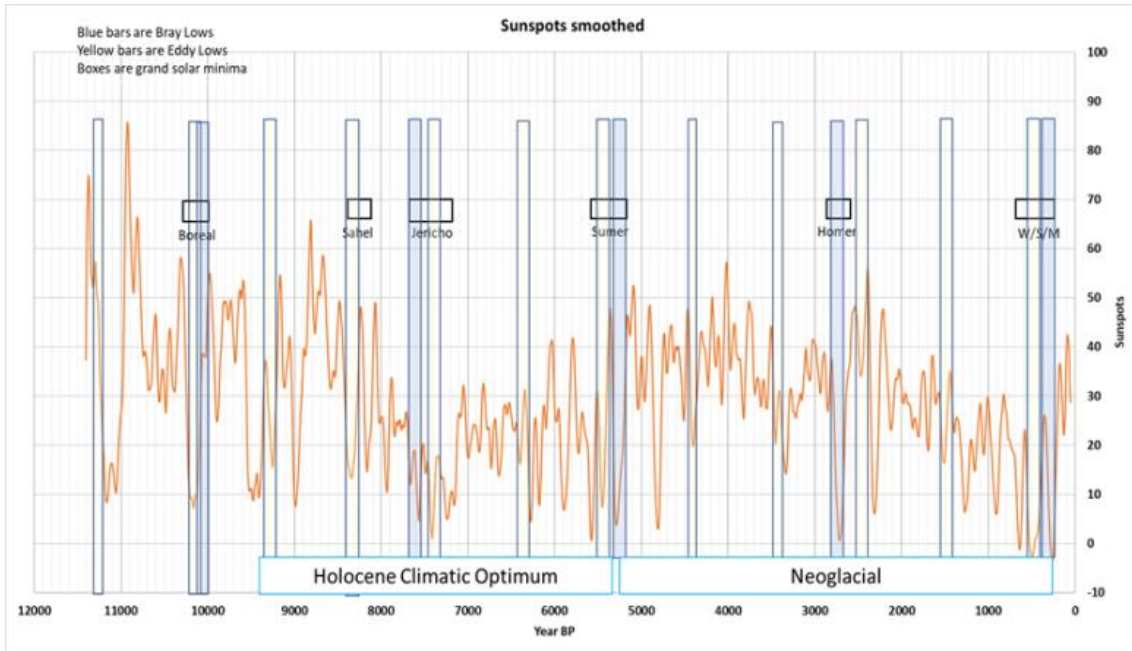
Magnetic North Pole movements



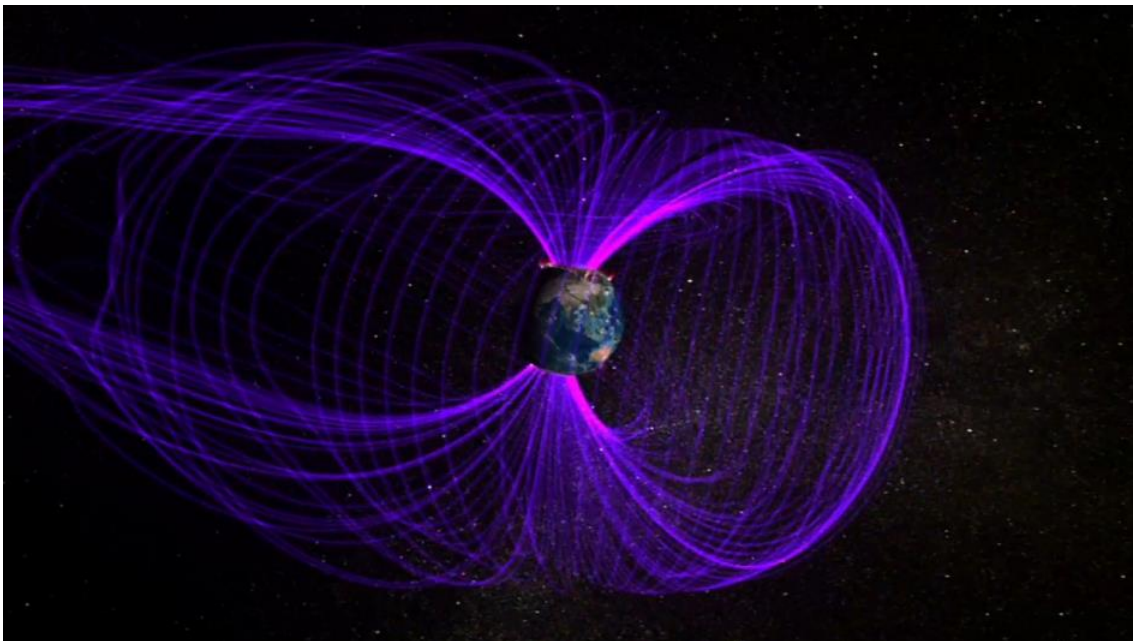
(BELOW) Like I said, this is a natural cycle. As an evidence, I'll take you back to 200 AD. Top left of the image is the same direction that the magnetic pole is wandering toward Russia. Notice that it's in the same direction as 79 AD, and we are going to experience nearly the same planetary geometry. Do you think that's just a coincidence, or do you think it is a repeating pattern?



This is also one of the things the article did not consider, going back in time and talking about longer duration timeframes. They're always focused on the satellite record, the 50-year or a 100-year time frame. What about the last 1,200 years? Why don't we also look at the intensity of changes that our planet has endured naturally, long before CO2, long before factories, long before cars. The undulations in heat spikes and cold down trends are natural, and we're naturally heading into another down trend at the moment.



It's all about the magnetosphere, the electromagnetic coupling between Earth's magnetic poles and the Sun.



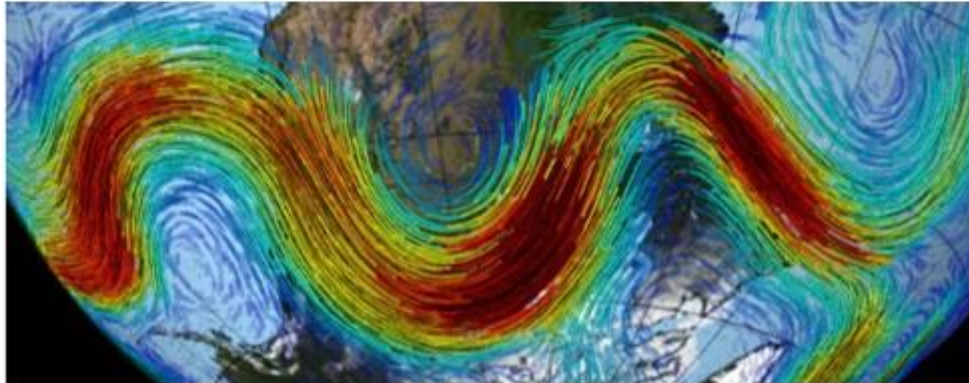
Yet, they very boldly stated that human-caused Global Warming has altered the strength in the path of the powerful winds, otherwise known as the Jetstream. They've finally come out cleanly saying that the Jetstream has weakened, but as to the causation, this is what I want to discuss.



BY BOB BERWYN, INSIDECLIMATE NEWS

FEB 2, 2018

Polar Vortex: How the Jet Stream and Climate Change Bring on Cold Snaps

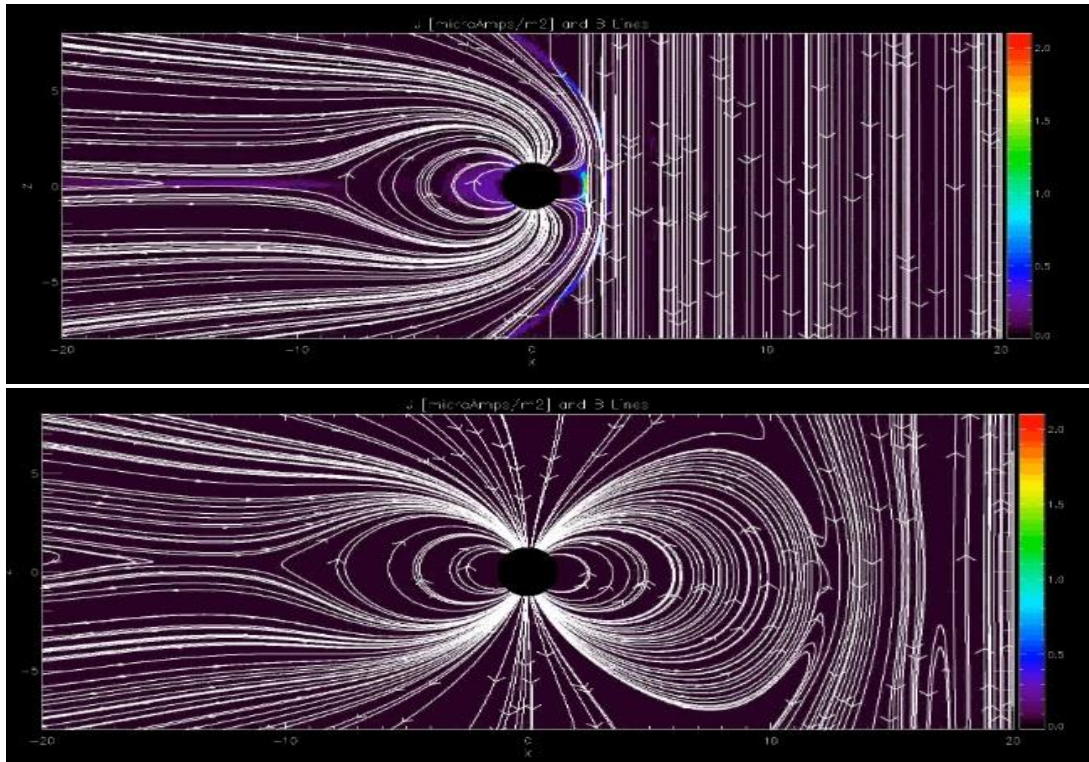


How is the jet stream changing?

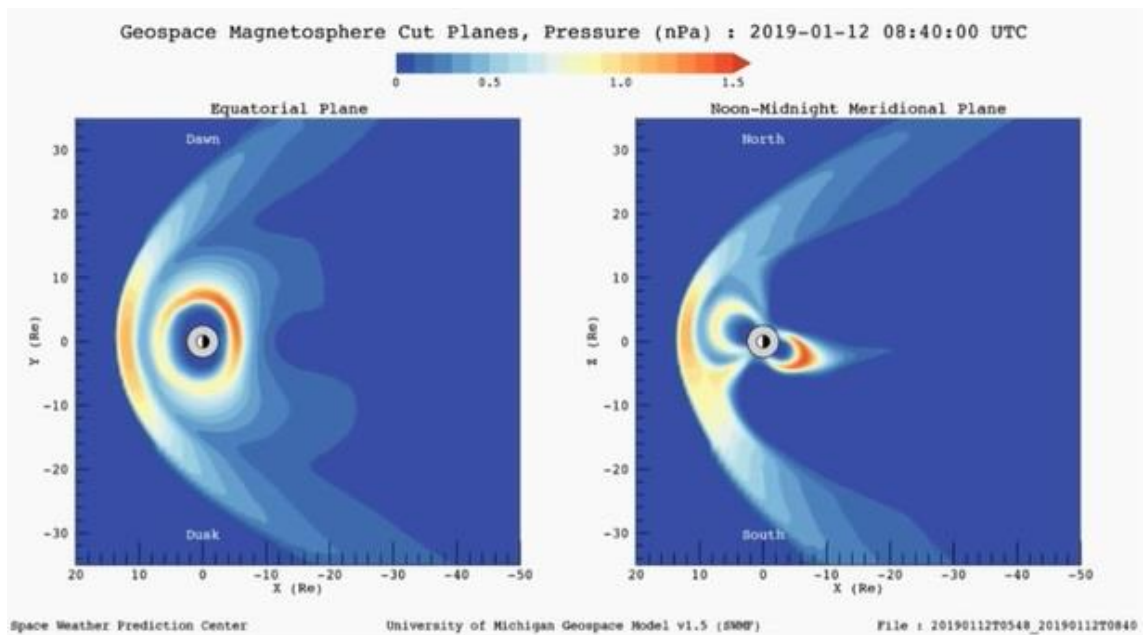
Research shows that over the past several decades, the jet stream has **weakened**. There's also evidence that as it wobbles, it can get stuck out of kilter, which can lead to **more persistent weather extremes**, including heat waves, cold snaps, droughts and flooding.

Scientists say there is strong evidence that **human-caused global warming has altered the strength and path of the powerful winds.**

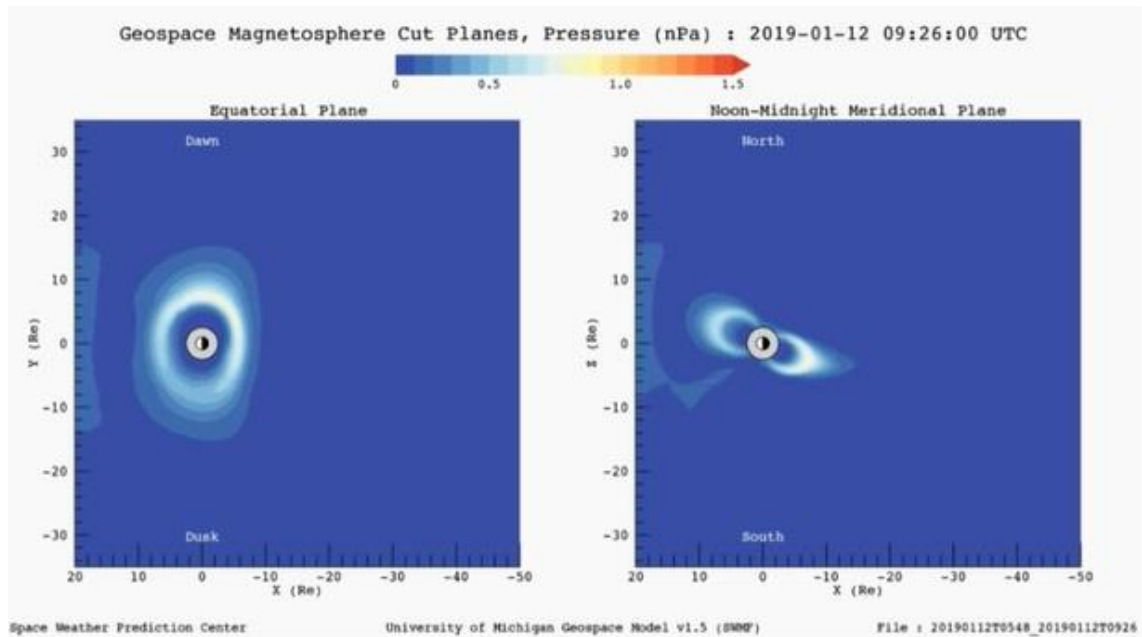
Solar wind is a huge component in the dynamics of what's happening on our planet, and this was not discussed at all, in this article.



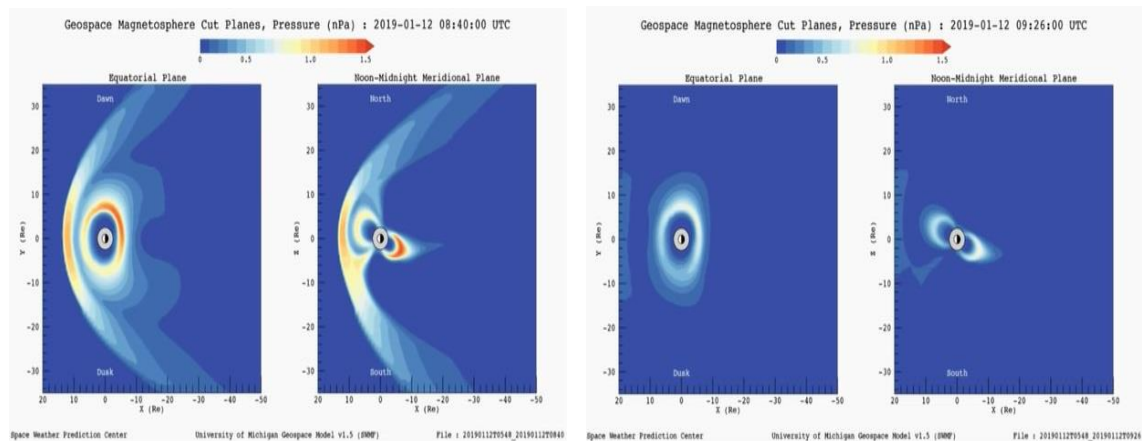
To get you with a better representation, this is a strong solar wind.



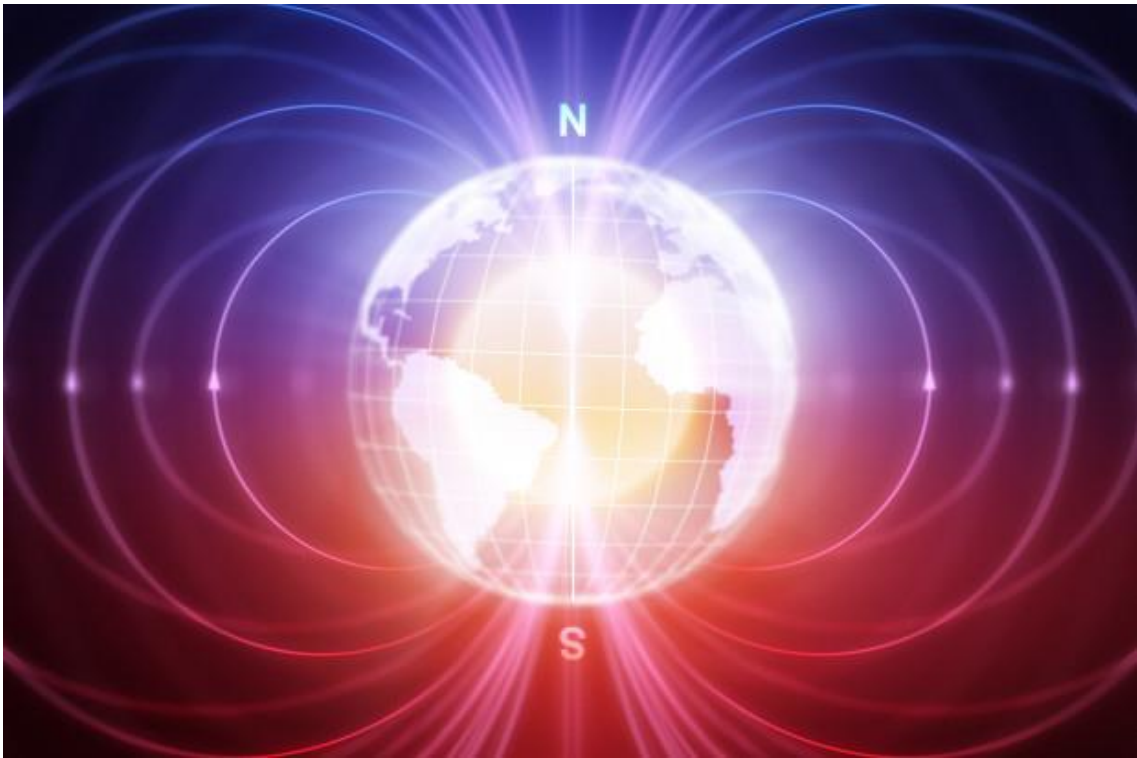
This on one hand, is when there's no solar wind. And this is happening right now.



This verifies that the changes in our atmosphere are related to what's happening in our Sun.



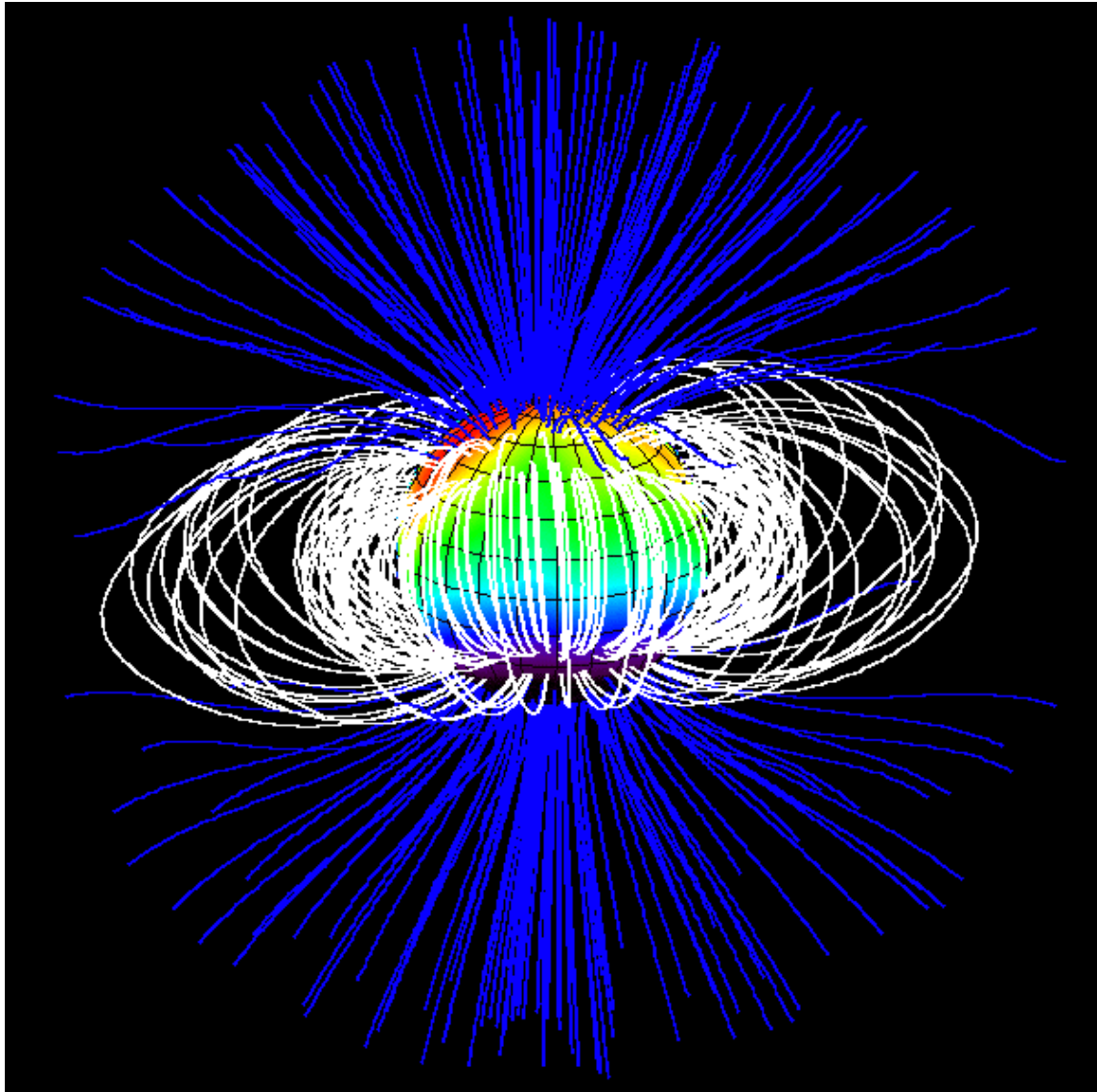
Magnetic field lines form the Earth's poles, otherwise known as field-aligned currents, lock our magnetosphere tightly, which in turn lock the jet streams in place, so that jet streams would have nice and steady flows.



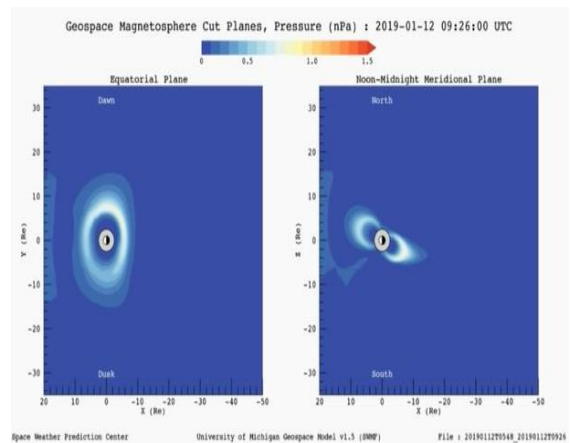
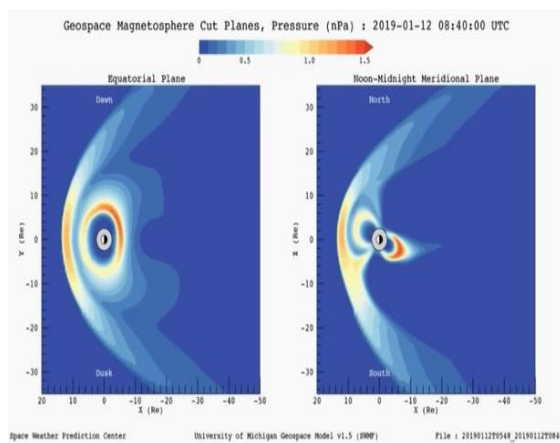
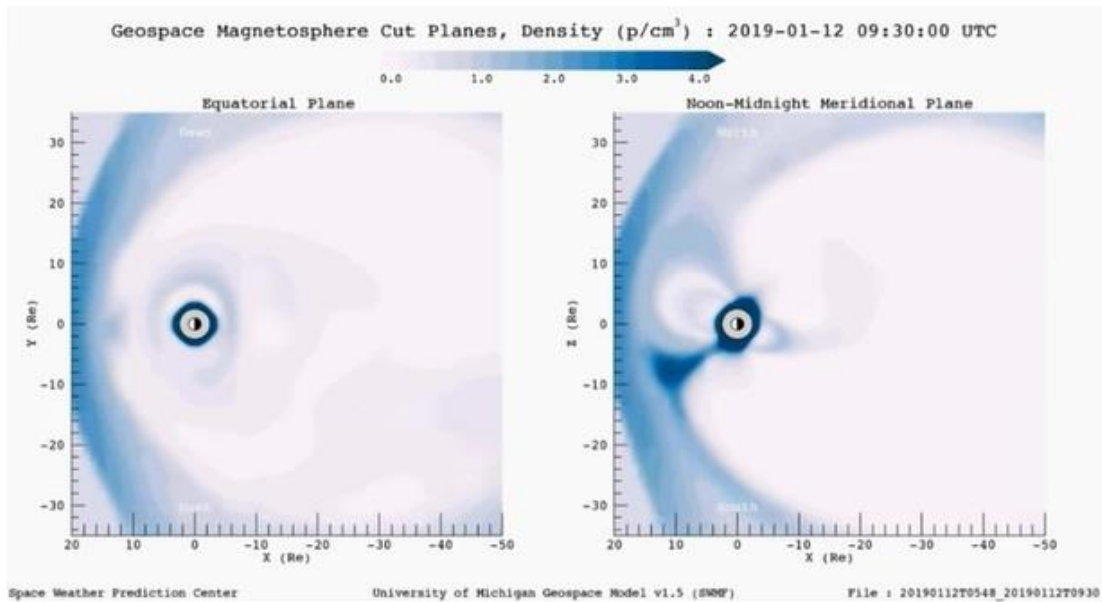
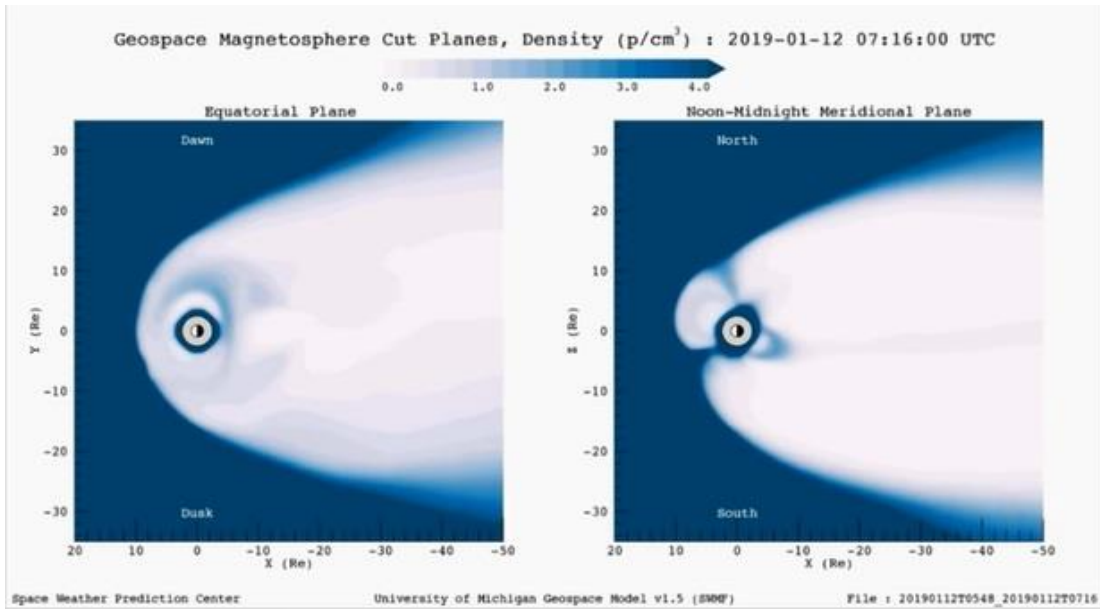
So what if the media comes clean and accepts that the Sun is the driver of these changes, and that as the Sun decreases its activity state, our weather is going to get more extreme?



Nevertheless, know that the magnetic field lines would weaken and go out wider in their locking toroid flow, if you had less incoming energy. So, to put it in perspective, this declining solar activity over 400-year cycles or 2,000-year cycles or 3,600-year cycles affect Earth's magnetic field which locks jet streams in place.

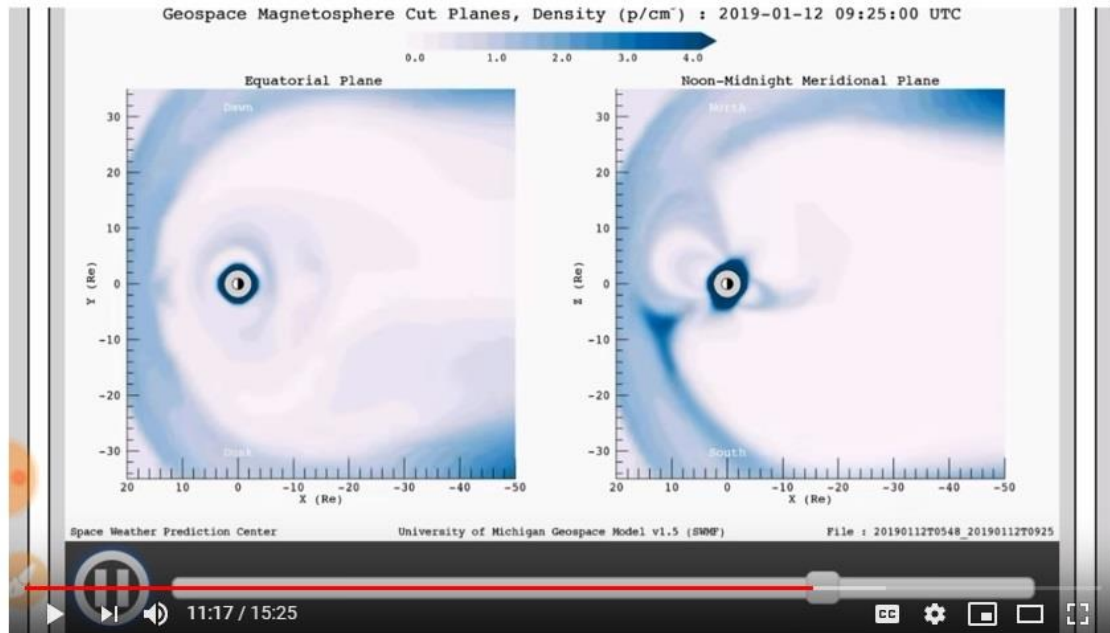


Then when solar winds get weaker, we go from compression, to expansion.



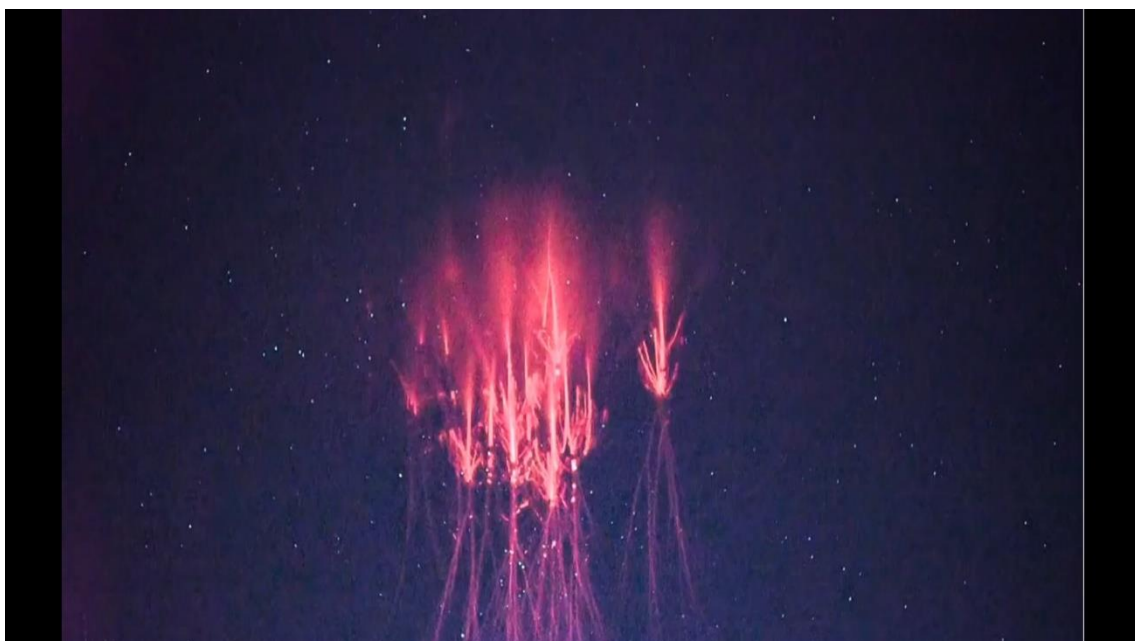
We even have good representations at *smAsho mAsh*, which puts these illustrations of with solar wind, and no solar wind daily.

These abnormal images of solar winds are not just representations, they are happening right now. You can check this out on *Space Weather: ULTRA WEAK Solar Activity, Indoor Tomato Total Reaches 3, WEAK Magnetosphere*, and see how these are all coupling.



Space Weather: ULTRA WEAK Solar Activity, Indoor Tomato Total Reaches 3, WEAK Magnetosphere,

Furthermore, if there were electromagnetic changes, we should start to see more unusual atmospheric lightning events as well, like all the sprites that are being spotted around the planet. It is not coincidental, these effects are all coupled together.



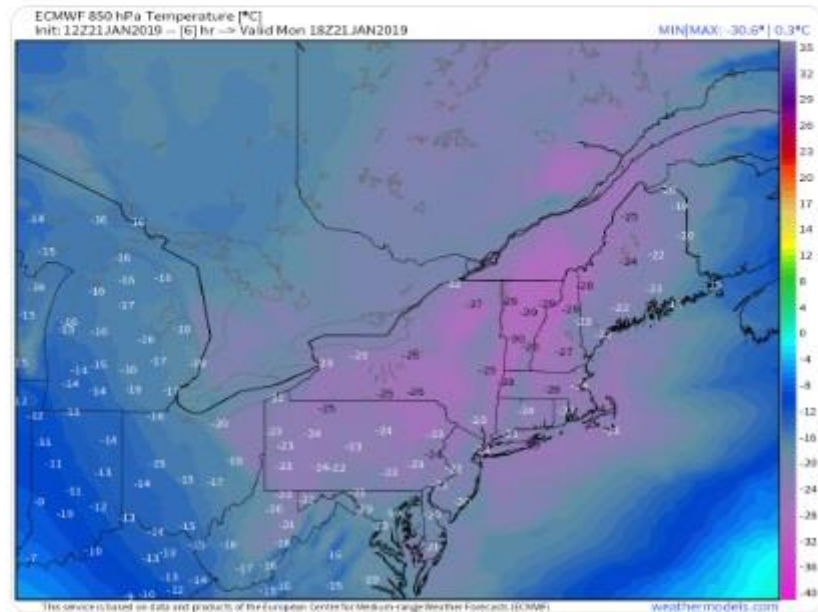
The historical cold that swept all the way to the East Coast, including the Great Lakes, is also evidence of coupling events.



Ryan Maue @RyanMaue · 22h

We watch the layer of atmosphere about 1-km up at 850 mb pressure for cold-air. This morning much of New England saw -25°C to -30°C and that is enough to set records for cold daytime highs.

Historical cold would be in the -35°C to -40°C range usually bottled up over Canada.

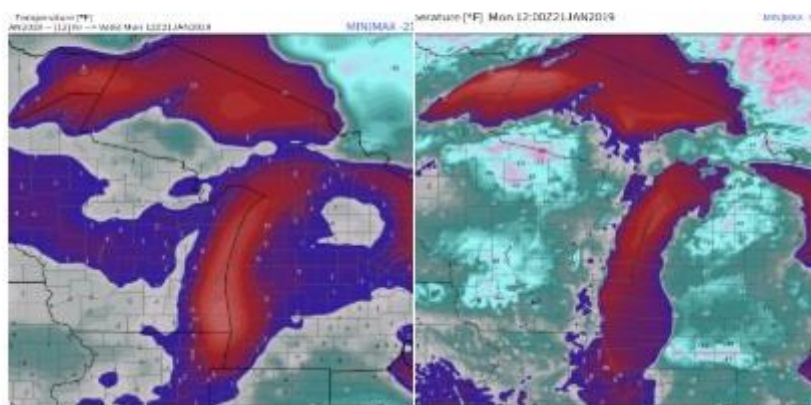


They however said, that during this event, the temperature stations were registering 20 degrees Fahrenheit - much too warm.

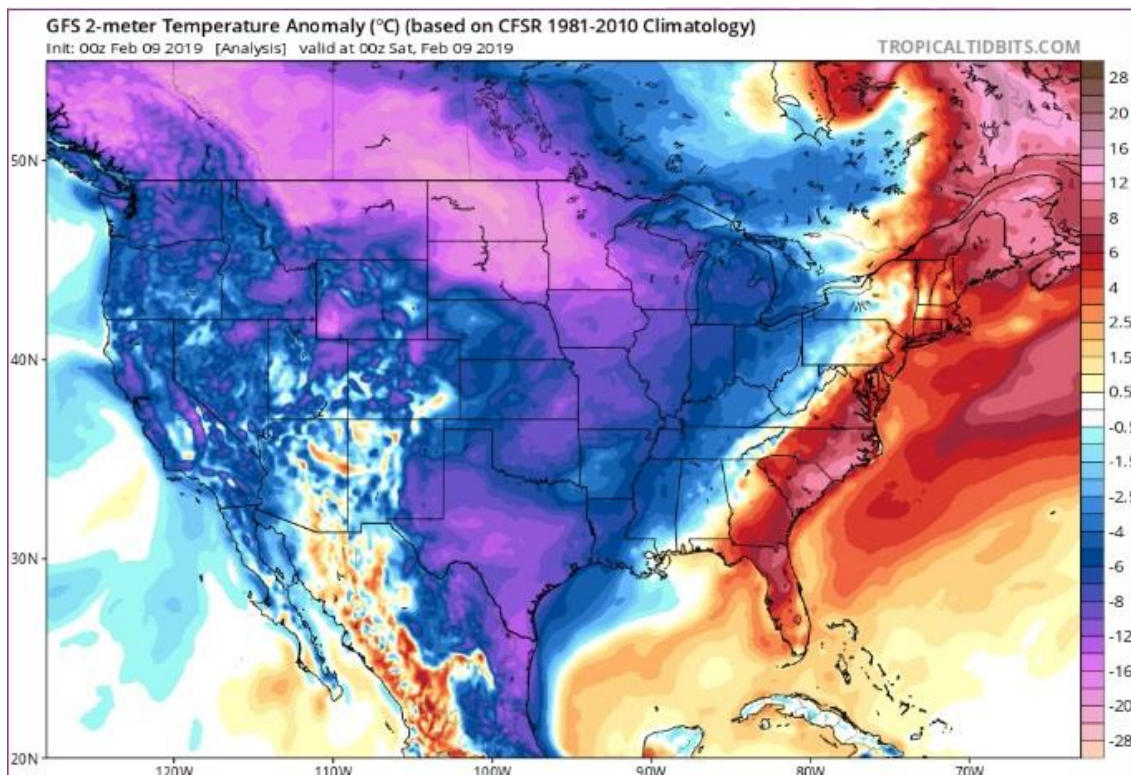


Ryan Maue @RyanMaue · Jan 21

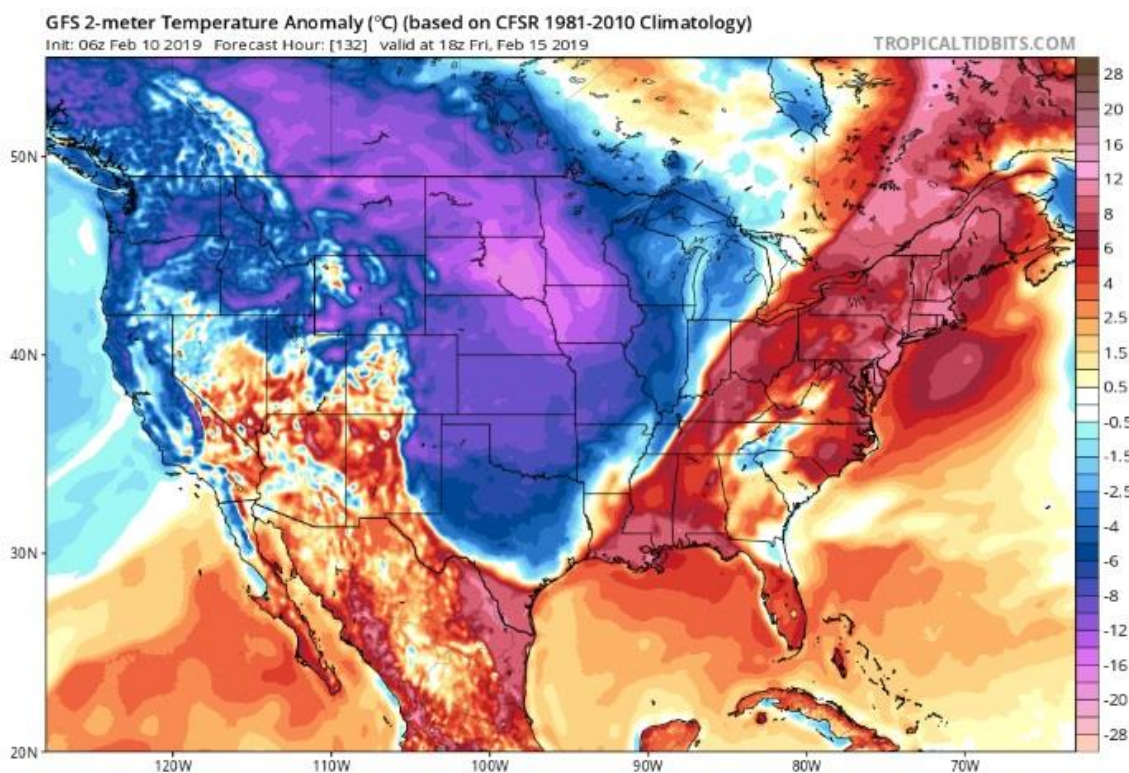
GFS does not do well with clear skies and Arctic air around the Great Lakes ... temperatures from the 00z model were off by 10° or 20°F -- much too warm.



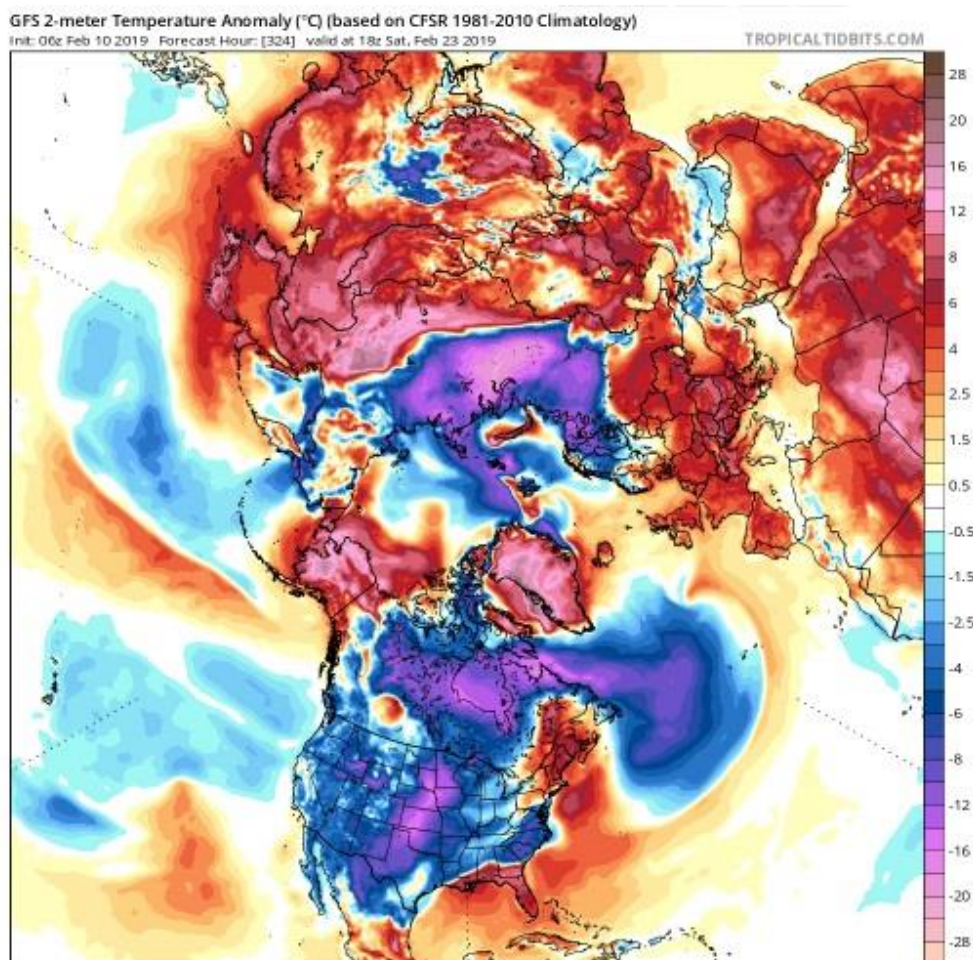
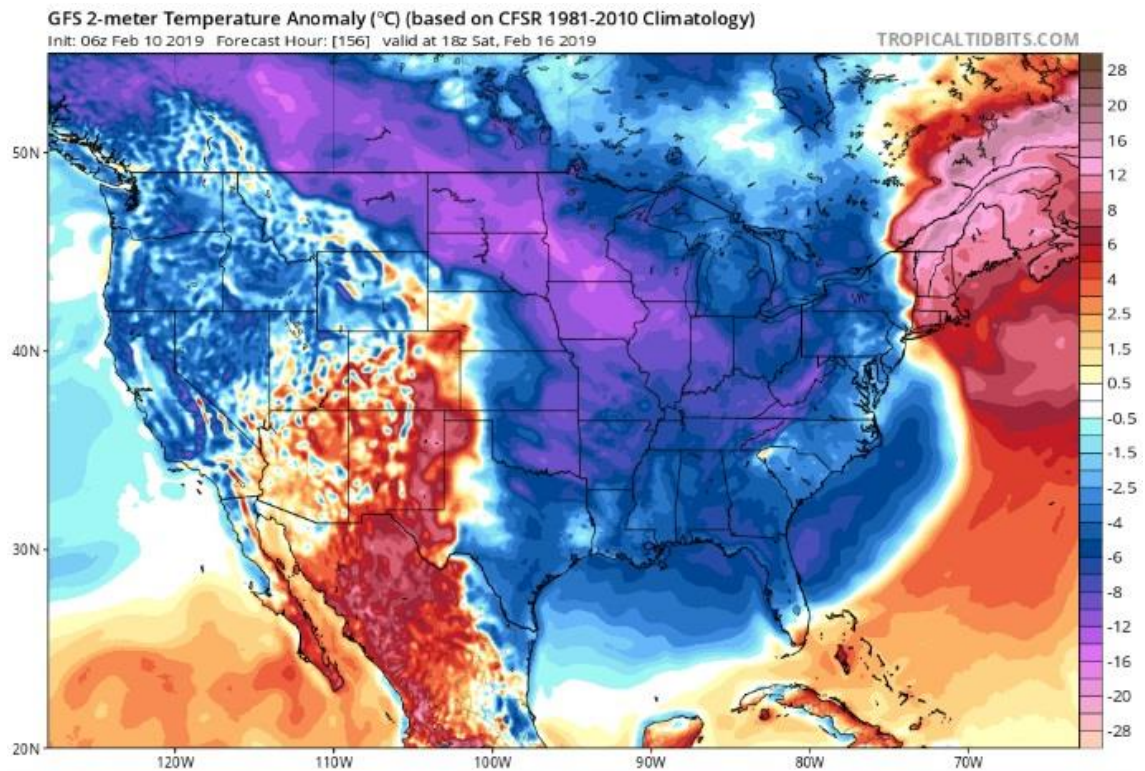
Weather fronts from February 9th to 16th.



More plunging cold temperatures are all the way down to southern Mexico this time. Even Texas, in the middle of the month.

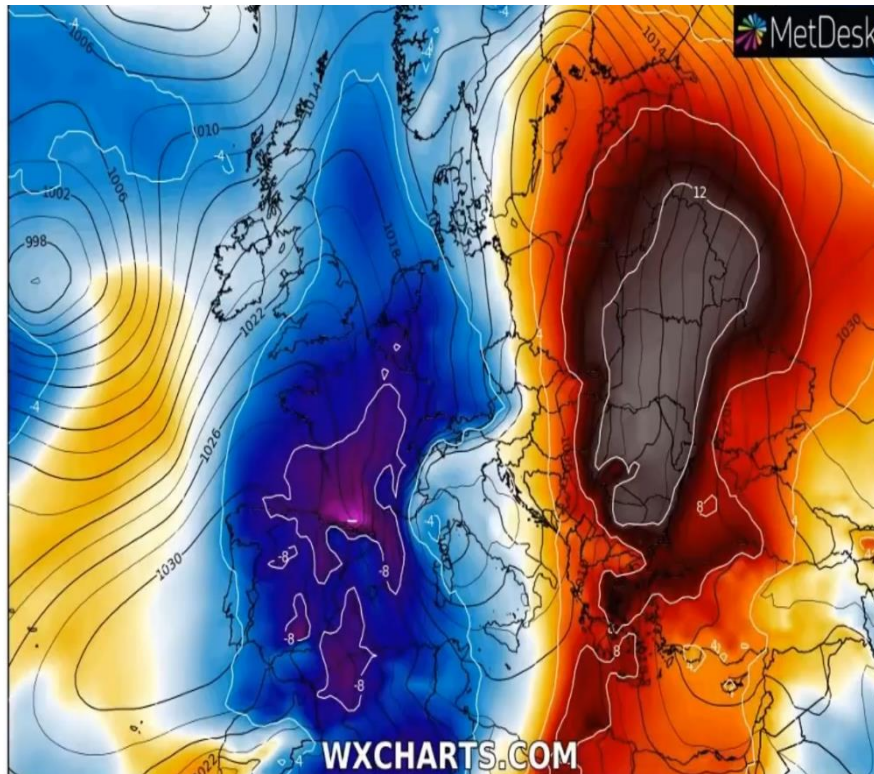


On the 16th, cold also going to sweep through Florida. The leading edge of the Jetstream can actually be seen, where it's bent in the wrong direction.



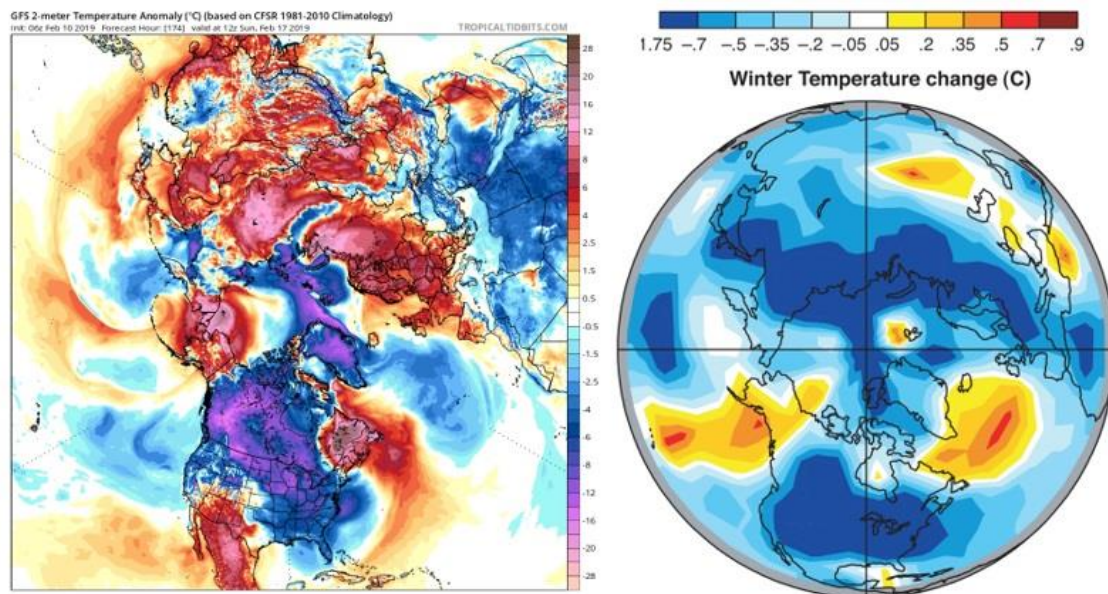
The orientation is off on where the Jetstream should be, this is not CO2, it is the Sun. Here's another glimpse if you're not yet convinced. As shown, the Jetstream should be more of a north-south orientation, instead of east-west orientation.

This is exactly what is seen in Europe. The same mix ups of their jet streams, where extreme heat is against extreme cold in a north-south orientation.



For comparison, I tried putting some of these GFS model on the left, side by side with the Maunder Minimum temperature reconstruction on the right. According to over 2000 peer-reviewed studies, changes in temperature and precipitation is observed during the Maunder Minimum. Can you spot any similarities in terms of cold in these two images?

Alaska is where the heat is; the Central US and parts of Canada is exactly where the cold is; a little bit south of Greenland, you get that heat pocket again; right through the middle of the Arctic is cold; also, North Africa is cold. I mean 90% of this map from the Maunder Minimum temperature reconstruction matches with today's 2019 GFS models. Yet no one has even considered to look into the past and see if there are some similarities that we should be talking about, to protect our global food source.



Feb 17, 2019 N. Hemisphere temperature anomaly (LEFT)
Maunder Minimum temperature reconstruction (RIGHT)

By David DuByne - ADAPT 2030 Channel YouTube - Mini Ice Age Conversations Podcast

If you recall, back in the 1990's, this Global Warming hype first started with statements like: "We're going to boil like frogs in a pot." Science was settled back then too, like they said.

I really don't know how they can they come out with a straight face and tell us back in the 1990s that science was settled, we are to boil like frogs in a pot, our kids would never know what snow was and every winter moving forward is going to get milder and shorter because the summers is going to be longer; and then just flip everything into: We told you that heat was going to cause record cold.

They never told us anything of this sort, they just flipped the narrative. Science is never settled. It never was and it will never be.

BOILING THE TOAD...



So I'm wondering what's next. Are they going to say eclipses are caused by CO2 too? Also, if we put a global CO2 tax, can we change the color of the moon back?



Thanks for reading, I hope you got something out of the article. If you like more information like this, I produce the tri-weekly Mini Ice Age Conversations podcast, 30 minutes of an in depth analysis on the GSM you can take on the go.

Mini Ice Age Conversations Podcast

iTunes: <https://itunes.apple.com/us/podcast/a...>

Soundcloud: <https://soundcloud.com/adapt-2030>

Libsyn: <http://adapt2030.libsyn.com/>

For the bi-weekly Grand Solar Minimum climate update newsletter from myself, David DuByne, (ADAPT 2030) jump over to oilseedcrops.org you can enter your email and sign up. Move your mouse around for about 10 seconds and this box will pop up.

Join ADAPT 2030 NEWSLETTER <http://www.oilseedcrops.org>



Grand Solar Minimum Climate Updates

Our Sun is repeating a 400 year cycle which will effect global crop yields. Food prices will increase everywhere on this planet.

Sign up now to understand how the Grand Solar Minimum will affect your life as it intensifies from this point forward?

ADAPT 2030
Mini Ice Age

Enter your email address here...

SUBSCRIBE

OIL SEED CROPS
FOOD & FUEL
www.oilseedcrops.org

Support ADAPT 2030 by Visiting Our Sponsors

ADAPT 2030 & My Patriot Supply

2-Week Food Supply 92 servings

www.preparewithadapt2030.com

Taking the Fear Out of Difficult Situations

[ADAPT 2030 True Leaf Market Link](#)

ADAPT 2030 Amazon Grand Solar Minimum Book Store

<https://www.amazon.com/shop/adapt2030>

Today's Story Links

<https://insideclimatenews.org/news/02022018/cold-weather-polar-vortex-jet-stream-explained-global-warming-arctic-ice-climate-change>

Tim Ball: In Climate Propaganda, Normal Is Promoted As Abnormal

<https://www.technocracy.news/tim-ball-in-climate-propaganda-normal-is-promoted-as-abnormal/>

Global Temperature models

<https://www.tropicaltidbits.com/analysis/models/?model=gfs®ion=us&pkg=T2ma&runtime=2019021006&fh=-72>

smAsho mAsh Channel

<https://www.youtube.com/channel/UCz6fIPEhT2I71IAA112krnA>

*** ADAPT 2030 Social Media Links ***

PATREON: <https://www.patreon.com/adapt2030>

YOUTUBE [ADAPT 2030 Mini Ice Age 2015–2035 Series on YouTube](#)

BITCHUTE <https://www.bitchute.com/hashtag/adap...>

BRIGHTON <https://www.brighton.com/channel/adapt2030>

STEEM <https://steemit.com/@adapt2030>

MINDS <https://minds.com/ADAPT2030>

MEDIUM : <https://medium.com/@globalcooling>

FB <https://www.facebook.com/Miniiceage>

TWITTER : <https://twitter.com/adapt2030>

GAB <https://gab.ai/adapt2030>

STEEM: <https://steemit.com/@adapt2030>