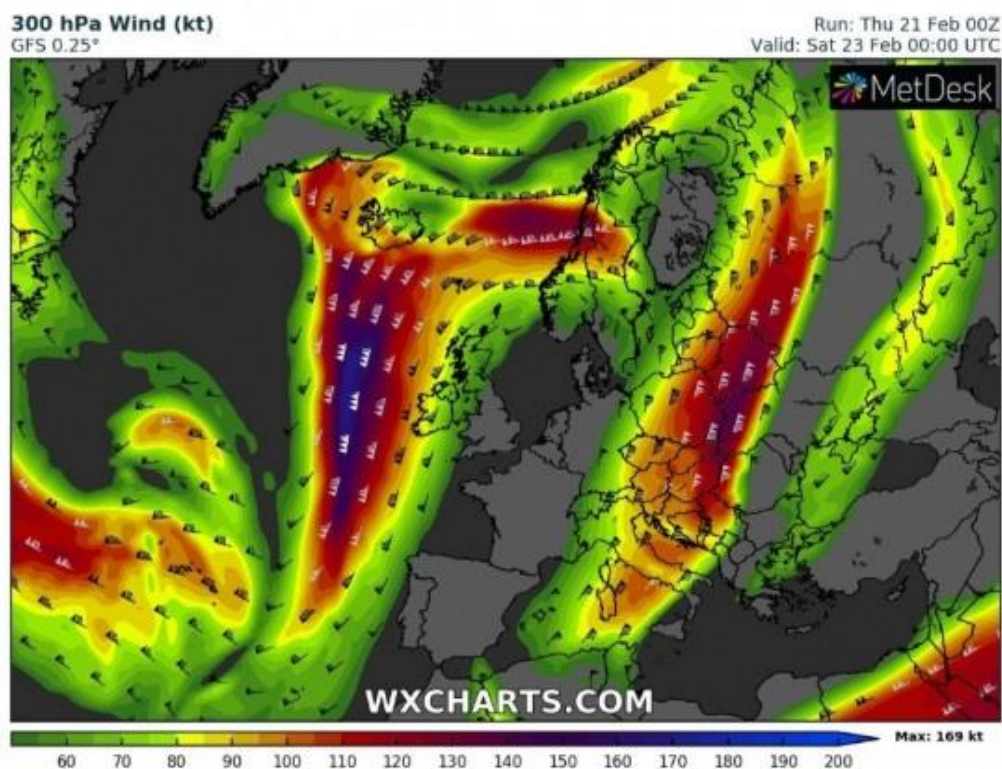


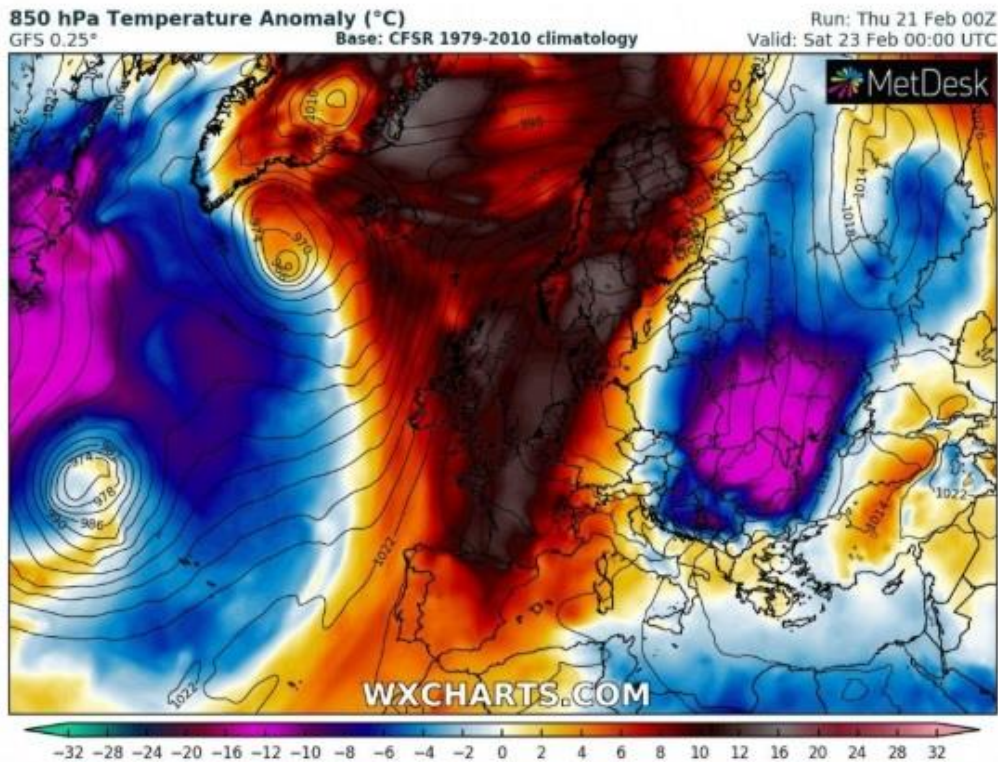
Bent Jet Streams Push Passenger Jet to Record Speed



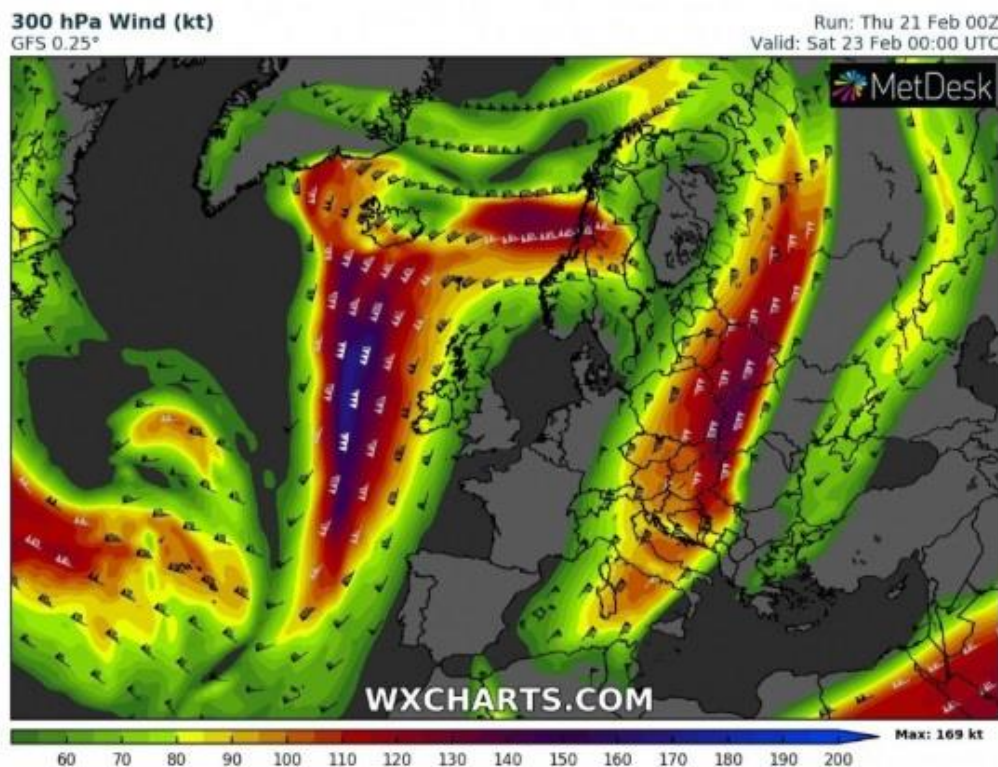
Jet streams are breaking and moving into different places across our planet at the moment, creating these extreme weather events you are seeing. If you are unfamiliar as to how this happens, here is a good visual representation. This happened in Europe and as an example, there's a cyclone to the west of the U.K, an Arctic front pushing to the South, an equatorial vortex pulling heat up into Central Europe, 120 mile per hour winds with record snow all happening in the same days.



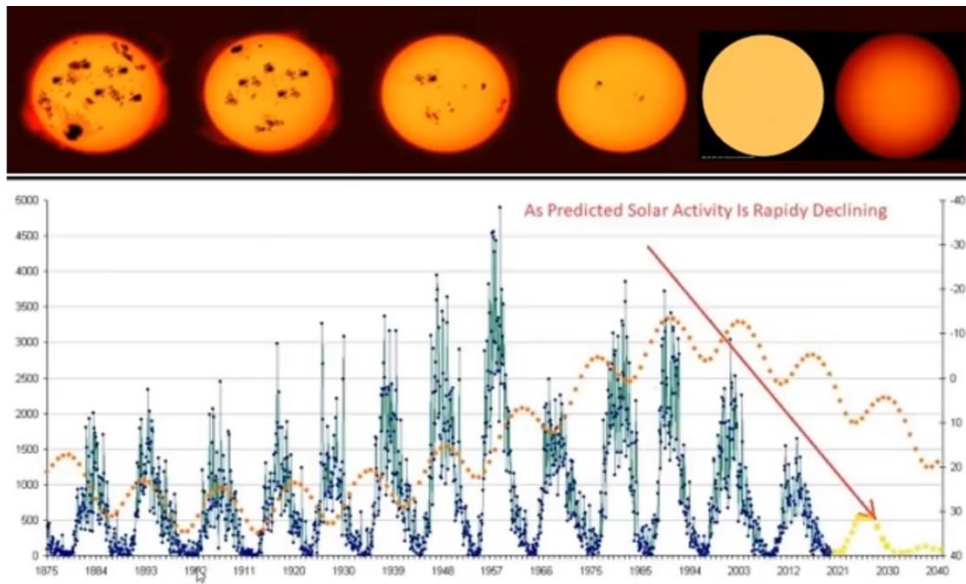
Furthermore, if this jet stream flow is transformed into temperature anomalies as in the map below, you see that equatorial vortex is being pulled up into the polar regions, while the polar regions are being pushed down into warmer southern latitudes.



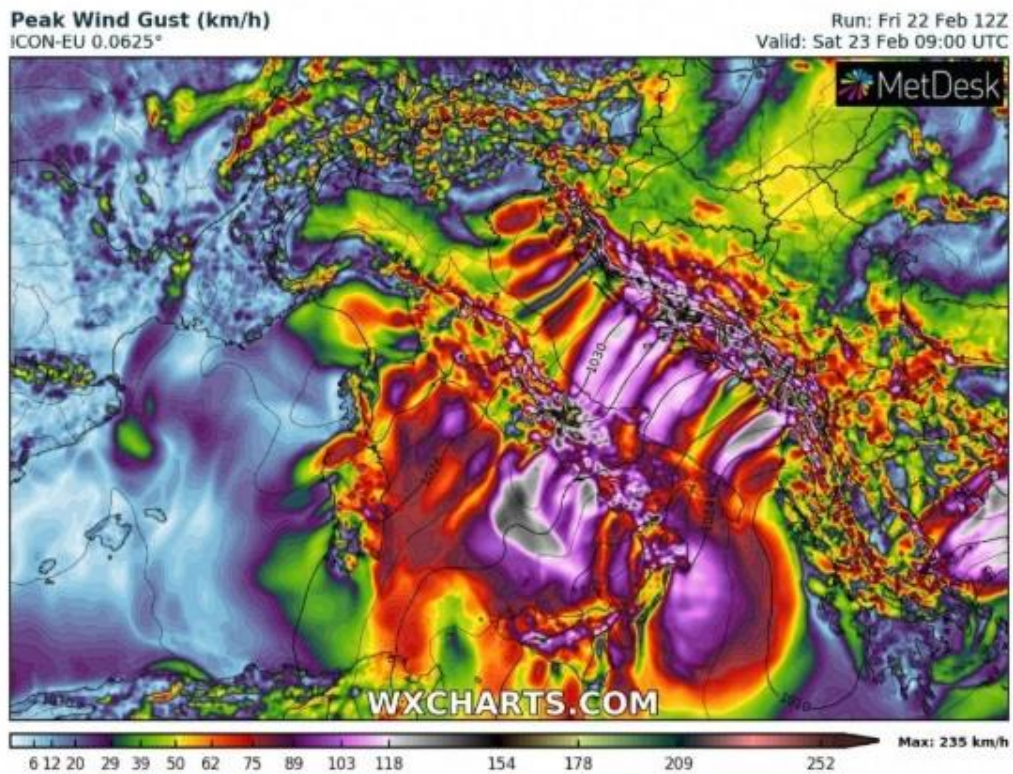
Let us have another glimpse of the jet stream so you could see the comparison. As we go deeper into the intensification of the Grand Solar Minimum, these jet streams are going to be even more out of their normal flows.



You can then expect heavier rains, heavier hail and more extreme events as we move forward in the timeline, through the next 15 years.



This chart shows a 120 mile per hour Bura winds through the Italian Alps down into the Adriatic and Slovenia. Incredible wind speeds that pushed over 200 kilometers per hour in some areas with gusts were registering 60 to 90 miles per hour through the day, and is expected to intensify through the night. So if you're out there, beware of these extreme winds.



And here we go with the same lexicon yet again, "I've never seen anything like this." Experienced pilots were talking about the record-breaking wind speeds that this jet encountered when it was crossing over a particular part of the United States, heading out from L.A. Wind speeds were clocked in at 1,280 kilometers per hour, which is just a bit over 800 miles per hour. Commercial aircrafts are not designed to break the sound barrier or shift into a hypersonic flight.



Thu, 21 Feb 2019

'Never ever seen this': LA to London flight breaks speed record due to furious jet stream

A Virgin Atlantic plane accidentally flew at the speed of sound during a record-breaking flight from LA to London

A Virgin Atlantic flight from Los Angeles to London reached the ground speed of 1289km/h with the help of strong winds, according to reports.

"Never ever seen this kind of tailwind in my life as a commercial pilot," tweeted Peter James, a jet captain.



Virgin Atlantic's Boeing 787-9 Dreamliner broke speed records.

Was this really true that some pilots or pilot associations were talking about the event across social media? Sure enough, strong jet streams of 758 miles-per-hour were over the US, pushing tailwinds on the aircraft clocking an all-time record speed for a commercial airliner pushed along by the jet streams.



Paul Deanno  @PaulKPIX · 19 Feb 2019



758 MPH: The jet stream is so strong over the US right now... that @VirginAtlantic Flight 8 from LAX to London is whipping above Kansas at a ground speed of 758 miles an hour. That's almost the speed of sound... #CAwx @KPIXtv



Peter James

@jetpeter1

Almost 800 mph now never ever seen this kind of tailwind in my life as a commercial pilot !! (200 mph tailwind)

pic.twitter.com/0XGTkEP9EB

♡ 395 10:22 - 19 Feb 2019



Ordinarily, jet streams cruise at roughly around 500 miles per hour, but at that time it was up around 750 miles per hour, a full 25% increase in wind velocity. Now you can see why all these events such as warm and heat in the wrong places and extreme atmospheric compression events ringing out of the sky because these jet streams are colliding across our planet. They're not normally in these spaces, so they're fighting for a position if you will.



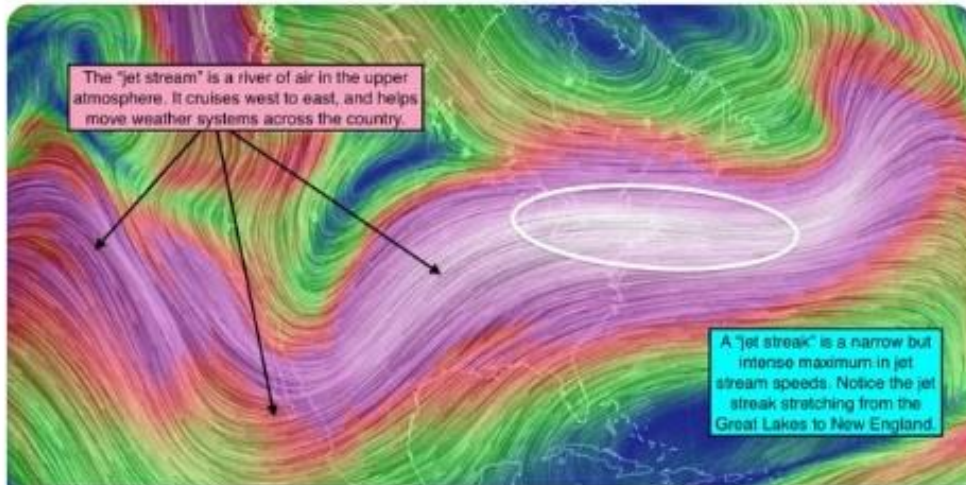
David Priess ✓
@DavidPriess



A Virgin Atlantic Los Angeles-to-London flight on Monday got a ride on an especially powerful jet stream, reaching a stunning 801 mph while over Pennsylvania.

This appears to be a record for the Boeing 787-9 twin jet, which ordinarily cruises at 561 mph. [wapo.st/2trMGtp](https://www.wapo.st/2trMGtp)

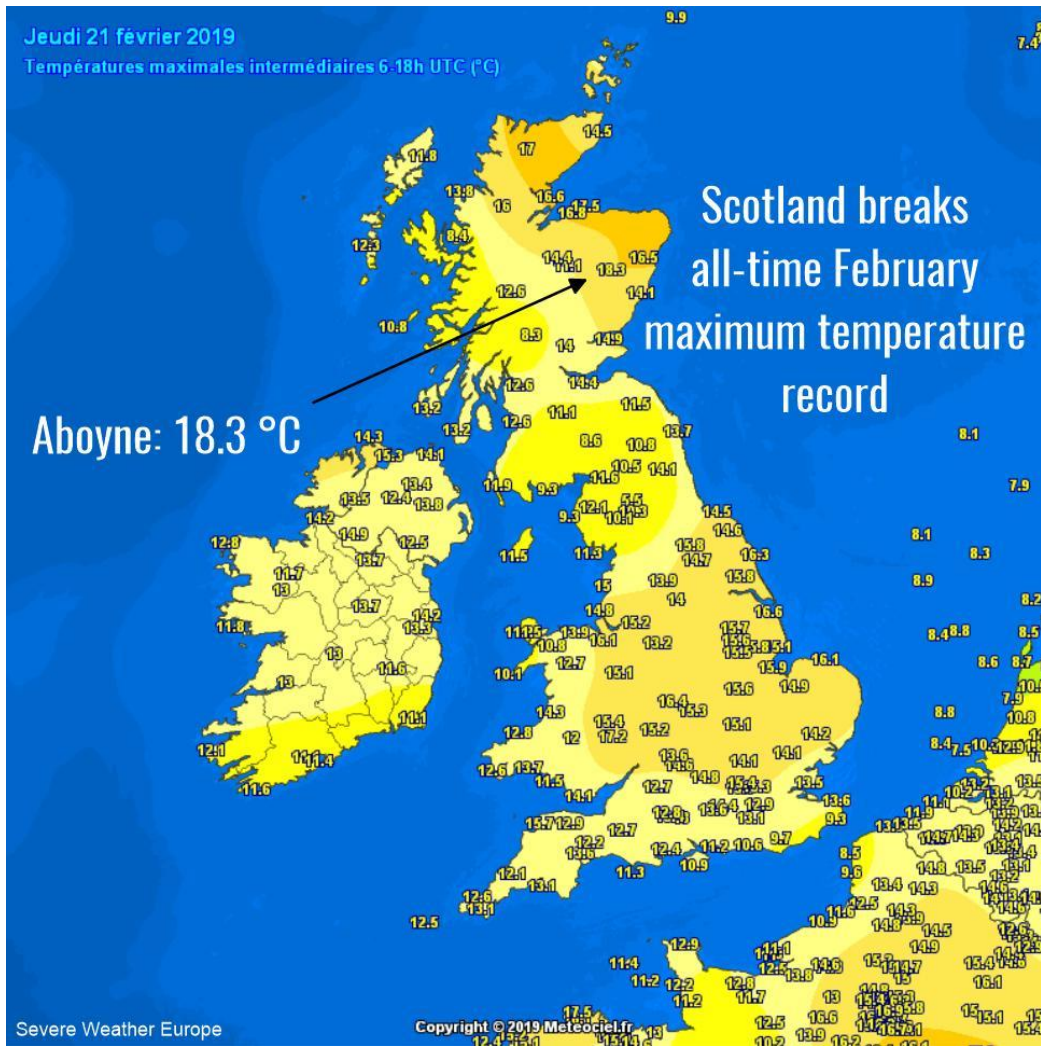
♡ 41 01:53 - 20 Feb 2019



Flight reaches 801 mph as a furious jet stream packs record-b...

A Virgin Atlantic flight from Los Angeles to London peaked at a whopping 801 mph Monday evening 35,000 feet over Pennsylvania.

Case in point, Scotland breaks an all-time February maximum temperature record with this newly recorded temperature of 18.3 degrees Celsius. Just so you know, a couple of weeks ago, they had record snow. Now temperatures flip-flop back and forth through the winter, and I do believe it's going get even cooler, as we move into March and April 2019.



Reports of snows in Saudi Arabia were in the same media feed on METEO WORLD as snows across the U.S desert S.W and over Los Angeles at the same time.



WEATHER/ METEO WORLD @StormchaserUKEU · Feb 20

WOW!!! Snow reported in northern Saudi Arabia this afternoon 20th February!
Report; @meteorologo777 #severeweather #extremeweather #snowfall

Marco M.M.



Now, take note that if jet streams are breaking and colliding we should see more powerful updrafts during electrical storm activity and you'd see bigger hailstones. Here we are, look at the size of these hailstones that came down in Cordoba, Argentina on February 23rd.

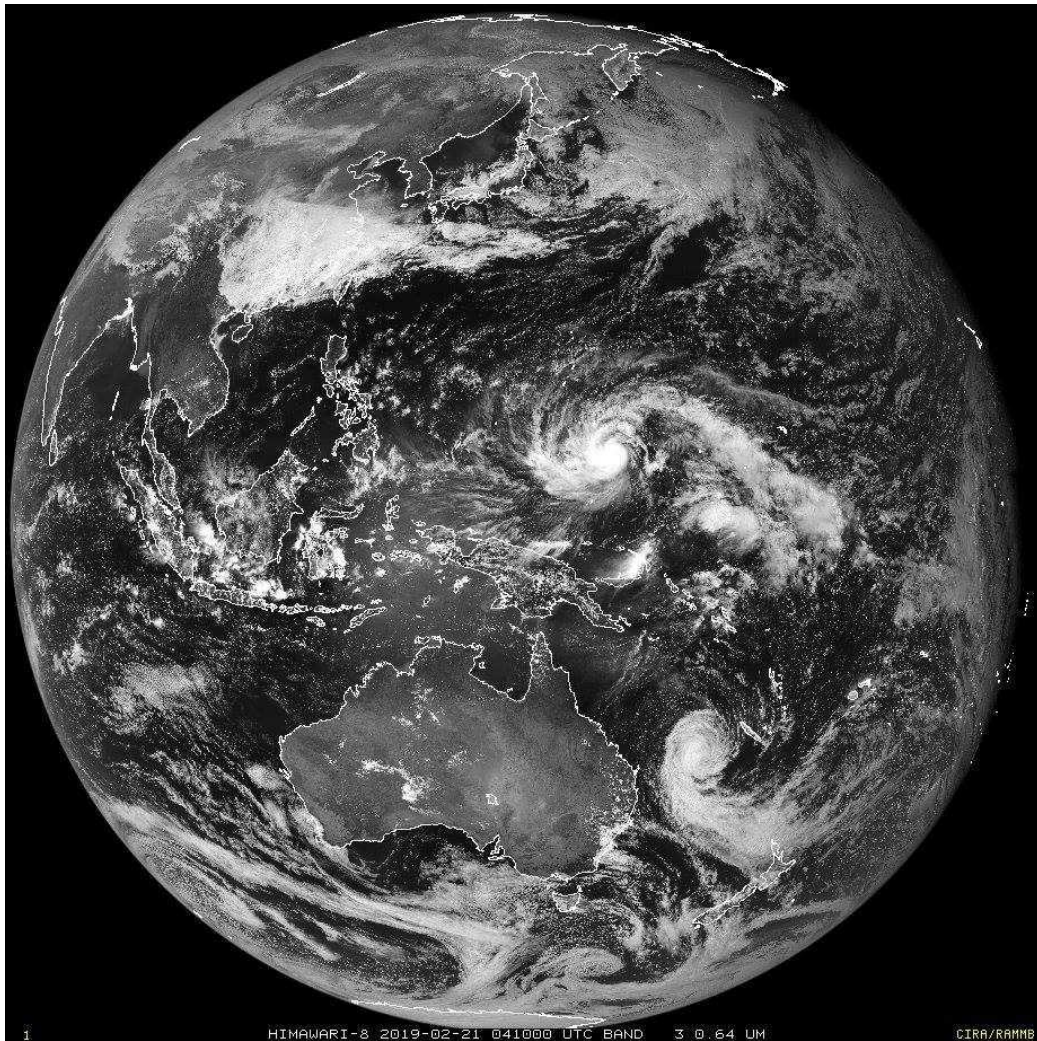


severe-weather.EU @severeweatherEU · 2h

World Weather Very large hail in Cordoba, Argentina yesterday, Feb 23. Report: Clima Extremo 24



Continuing with out of season storms, February typhoon is approaching the Philippines. Southern Hemisphere is active of course, but for the Northern Hemisphere, it's an out of season typhoon for sure. They might get one typhoon every several years which occurs in winter, like January and February, but it is not the norm. Typhoon seasons in that country are usually in July, August, and September.



Meanwhile, if the Earth's Magnetosphere is weakening, we'd see more intense electrical activity in the upper atmosphere. Now, what was seen in Mauna Kea in Hawaii? Well, upper atmospheric electrical jets were captured over Mauna Kea.



WEATHER/ METEO WORLD @StormchaserUKEU · Feb 15

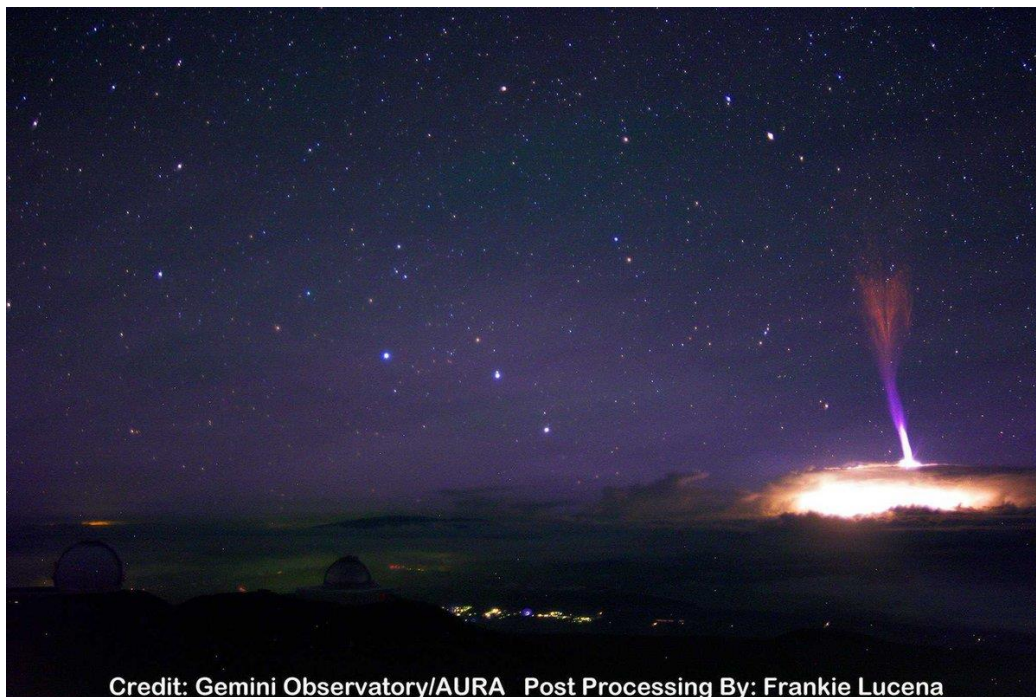
WOW!!! Stunning huge #lightning jet captured by Aura on the Gemini North Observatory, Mauna Kea in Hawaii.... Have you ever seen this before???

#severeweather #extremeweather #photographer



Credit: Gemini Observatory/AURA Post Processing By: Frankie Lucena

They look like red sprites at the top like some sort of a hybrid of electrical discharge. The intensity and the electrical connections between our Sun and our Earth are surely increasing.



Credit: Gemini Observatory/AURA Post Processing By: Frankie Lucena

During that same week, dragon-shaped Auroras are widespread across Chinese social media, this is because this is something in the skies.



Finally, for those of you who noticed the correlation between decreased solar activity and increased volcanism and tectonic activity, Mount Etna has been saying "hello" over these last couple of days, with ash clouds drifting.



Thanks for reading, I hope you got something out of the article. If you like more information like this, I produce the tri-weekly Mini Ice Age Conversations podcast, 30 minutes of an in-depth analysis on the GSM you can take on the go.

Mini Ice Age Conversations Podcast

iTunes: <https://itunes.apple.com/us/podcast/a...>

Soundcloud: <https://soundcloud.com/adapt-2030>

Libsyn: <http://adapt2030.libsyn.com/>

For the bi-weekly Grand Solar Minimum climate update newsletter from myself, David DuByne, (ADAPT 2030) jump over to oilseedcrops.org you can enter your email and sign up. Move your mouse around for about 10 seconds and this box will pop up.

Join ADAPT 2030 NEWSLETTER <http://www.oilseedcrops.org>

Support ADAPT 2030 by Visiting Our Sponsors

ADAPT 2030 & My Patriot Supply
2-Week Food Supply 92 servings
www.preparewithadapt2030.com

Taking the Fear Out of Difficult Situations
[ADAPT 2030 True Leaf Market Link](#)

ADAPT 2030 Amazon Grand Solar Minimum Book Store
<https://www.amazon.com/shop/adapt2030>

*** Today's Story Links ***

Pacific map typhoons <https://pbs.twimg.com/media/Dz9aj40XgAQXx9D.jpg>

Scotland all time high temperatures
<https://pbs.twimg.com/media/Dz9AQPAX4AAQ32z.jpg>

Strong warm advection across the Arctic region and northern Europe this weekend, Feb 22–24th <http://www.severe-weather.eu/mcd/a-strong-warm-advection-across-the-arctic-region-and-northern-europe-this-weekend-feb-22-24th/>

Hurricane-force Bora winds along the coast of NW Croatia, parts of W Slovenia and central Italy <http://www.severe-weather.eu/mcd/hurricane-force-bora-winds-along-the-coast-of-nw-croatia-parts-of-w-slovenia-and-central-italy-this-weekend/>

Never ever seen this': LA to London flight breaks speed record due to furious jet stream <https://www.sott.net/article/407760-Never-ever-seen-this-LA-to-London-flight-breaks-speed-record-due-to-furious-jet-stream>
<https://www.news.com.au/travel/travel-advice/flights/never-ever-seen-this-virgin-plane-breaks-speed-record/news-story/a9d86f80580a013e452d2c783ad6cdca>

Etna Eruption <https://pbs.twimg.com/media/Dz2CtjXX4AA10DG.jpg>

Blue Jet <https://pbs.twimg.com/media/DzfAFh3XQAALhRR.jpg>

*** ADAPT 2030 Social Media Links ***

PATREON: <https://www.patreon.com/adapt2030>

YOUTUBE [ADAPT 2030 Mini Ice Age 2015–2035 Series on YouTube](https://www.youtube.com/watch?v=ADAPT2030)

BITCHUTE <https://www.bitchute.com/hashtag/adap...>

BRIGHTON <https://www.brighteon.com/channel/adapt2030>

STEEM <https://steemit.com/@adapt2030>

MINDS <https://minds.com/ADAPT2030>

MEDIUM : <https://medium.com/@globalcooling>

FB <https://www.facebook.com/Miniiceage>

TWITTER : <https://twitter.com/adapt2030>

GAB <https://gab.ai/adapt2030>

STEEM: <https://steemit.com/@adapt2030>