

Out of Season Climate Chaos Continues

[— ADAPT 2030 Video Link —](#)

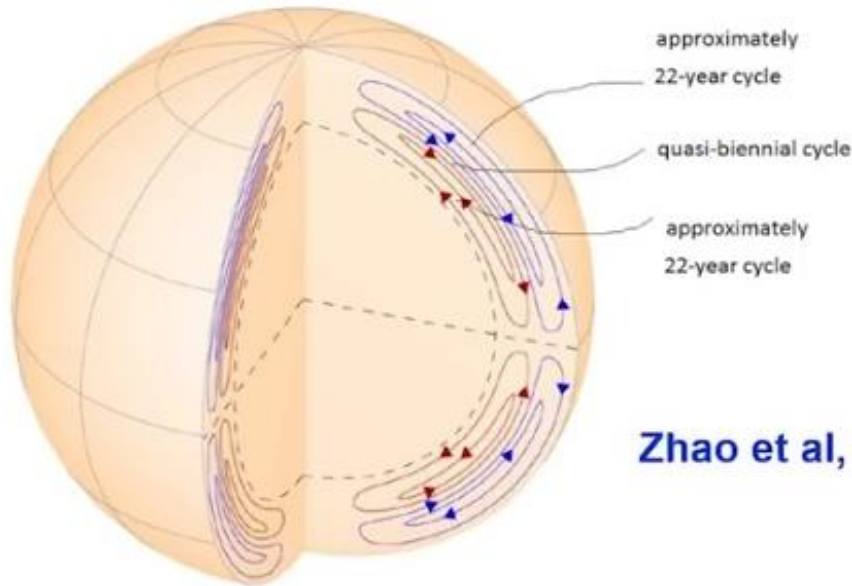


Starting you off here with a look at how Valentina Zharkova has come up with her forecast for Global Cooling moving out into 2028, which will reduce global crop yields to the point where we won't have enough food to feed everyone on this planet.

It's about the canceling magnetic field waves of the Sun. It's all about repeating cycles.

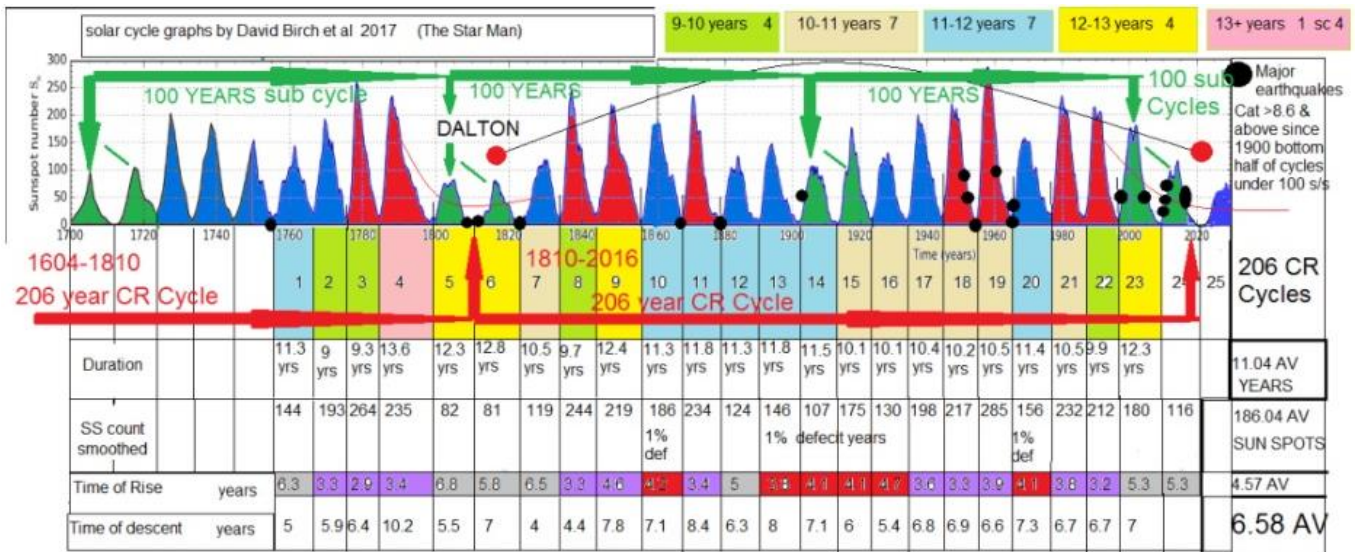
Dynamo in Two-Layer Medium

HMI/SDO helioseismic observations

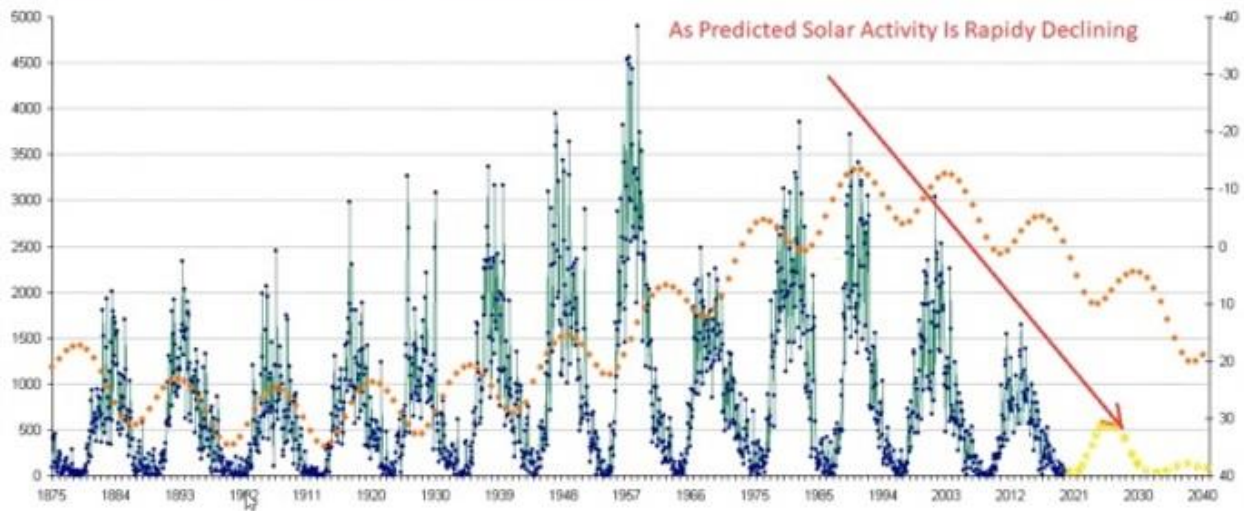
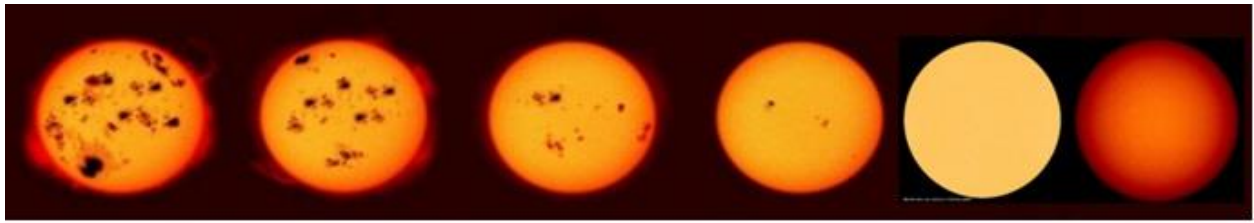


For example, David Birch the star man, has overlaid consecutive time and interwoven celestial cycles bringing us into the next Grand Solar Minimum.

The forecast is for decreasing solar activity explaining the reason for Sunlight biting your skin. We're getting UV changes as well as electromagnetic changes affecting Earth. Our jet streams and climate patterns are going into a global cooling phase for the next 20+ years.



No correlation found between sun spot count and duration.
 correlation found between long time rise + low to medium Sun Spot count. (cycles 1/5/6/7/23/24) over 5.3 years time of rise. => 80-143 S/Spots 97% Accuracy
 correlation found with short time of rise and high sun spot counts. (cycles 2/3/4/8/9/11/17/18/19/21/22. under 4 years time of rise => 193+ S.Spots 97% accuracy
 Correlation found = double 200+ sun spot cycles are always followed by smaller cycles. never 3 in a row. correlation found weak followed by min + 1.5 weak cycles



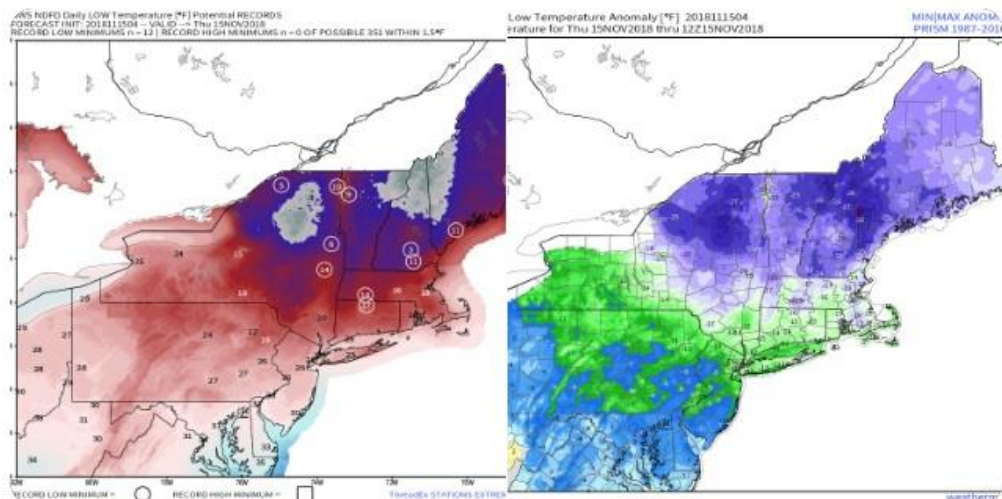
The signs would be around you, you could see these with you own eyes. Over to Ryan Maue, 23-30 degrees Fahrenheit below the normal average temperatures for the New England states in mid-November.



Ryan Maue | weathermodels.com @RyanMaue · 9h

Record lows across New England Thursday morning. Even below zero! These temperatures are 23° to 30°F below average for mid-November.

#WinterStormAvery

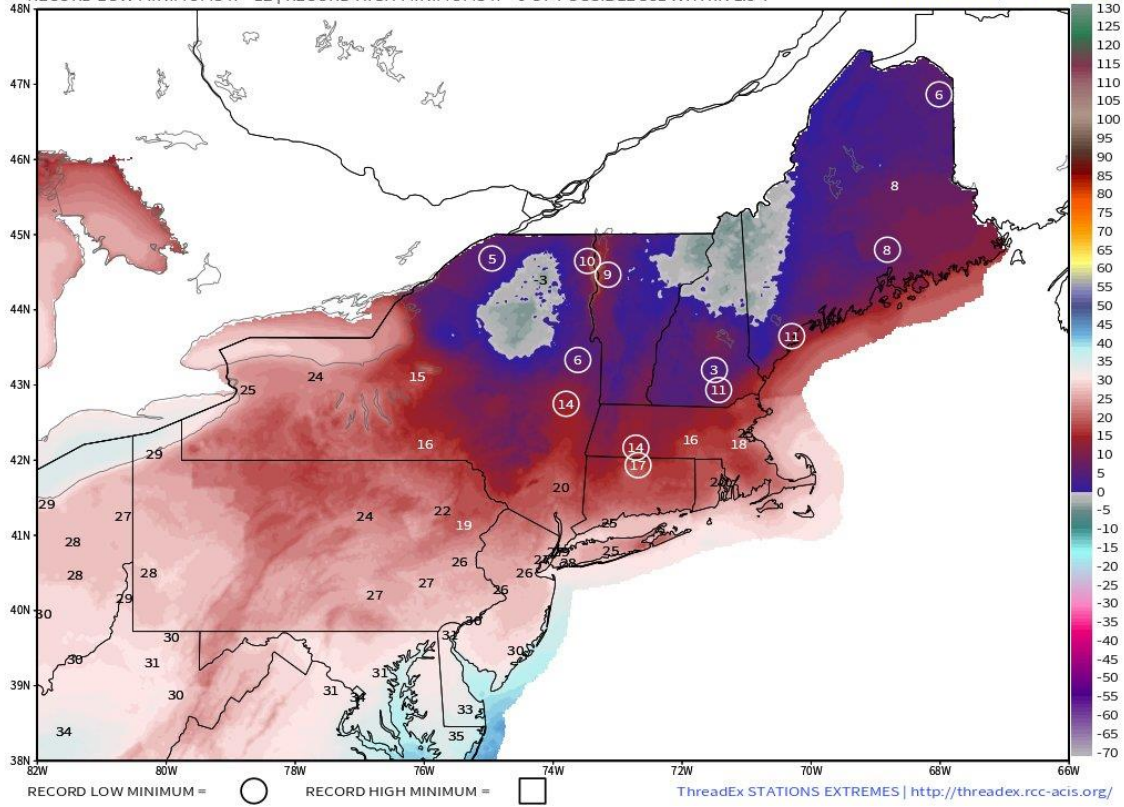


weathermodels.com

How cold is that really? Highs of 10 degrees Fahrenheit, and everywhere you see a circle, that is a new cold record set! These are year records, but if we compared it to a 400-year time cycle it would probably match something back in the 1640's.

NWS NDFD Daily LOW Temperature [°F] Potential RECORDS
 FORECAST INIT: 2018111504 -- VALID --> Thu 15NOV2018
 RECORD LOW MINIMUMS n = 12 | RECORD HIGH MINIMUMS n = 0 OF POSSIBLE 351 WITHIN 1.5°F

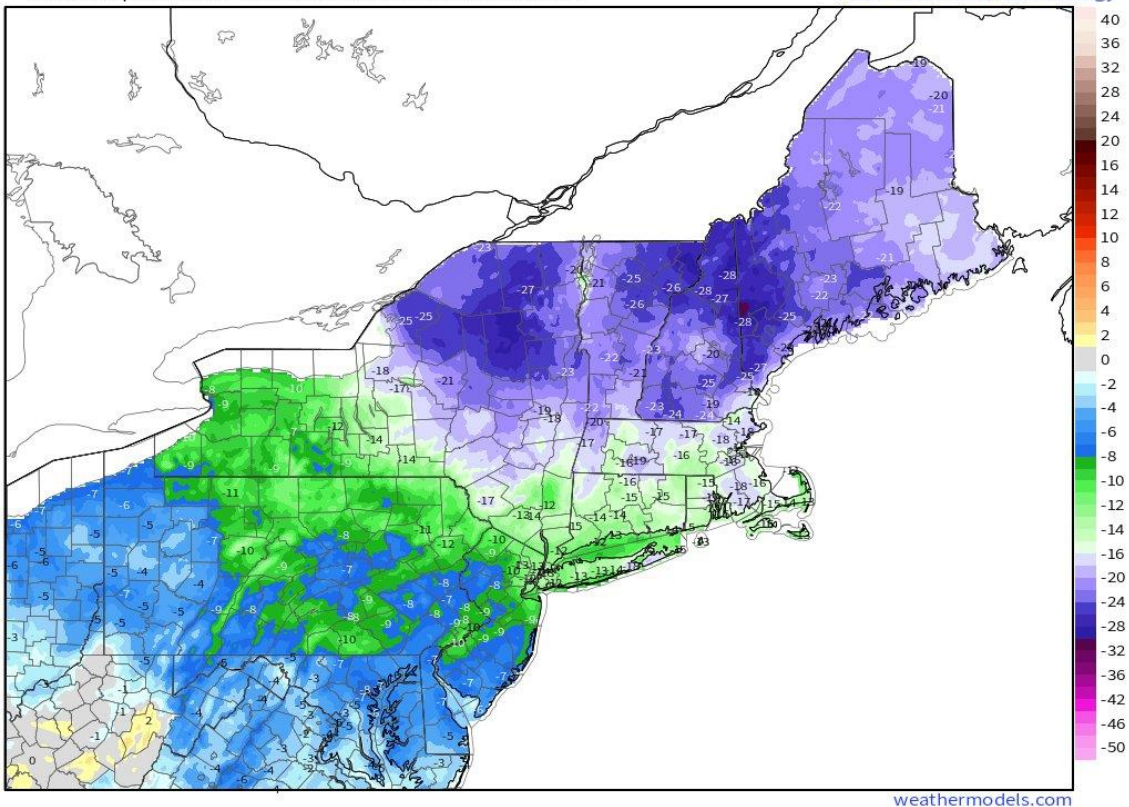
MIN|MAX -7.5° | 43.7°F
 weather.us | @ryanmaue



The darker blue is where we are going to see the largest temperature anomalies, 25 to 30 degrees Fahrenheit below normal. Top right, New England states, above Massachusetts.

NWS NDFD Low Temperature Anomaly [°F] 2018111504
 LOW Temperature for Thu 15NOV2018 thru 12Z15NOV2018

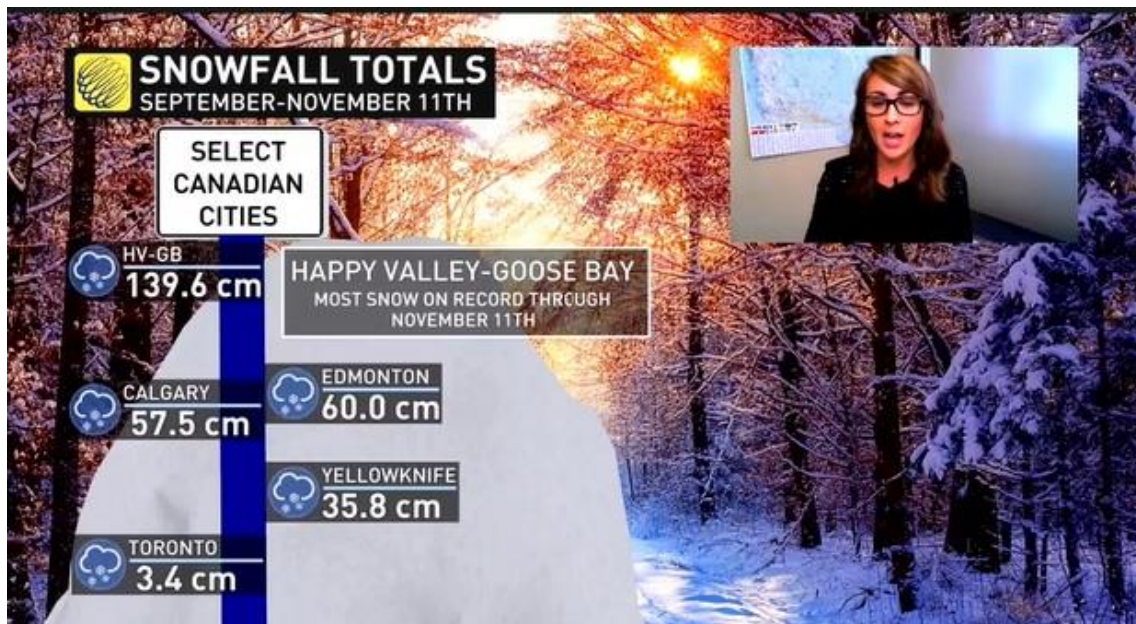
MIN|MAX ANOM: -31.5° | 3.5°F
 PRISM 1987-2016 Climatology



Continuing up into the Canadian Maritimes, Snowiest October on record. It's 25% snowier in 2018 @84 centimeters! Remember for those of you in the States, 30 centimeters is a foot, so they had almost three feet of snow in October and they're expecting more.



This is the most snow on record through this part of November as well. What are the chances that this area breaks its all-time snow fall record totals for October? Now on tap to shatter the November records as well?



You're going to ask yourself, where is Goose Bay? In the exact same place that had record snow & cold 201-7-2018, and the previous year in 2016. Do you see a pattern forming here? I do.



Also look at the exceptionally high winds with expected power outages, hurricane-force, winds with another winter storm as it progresses through the week.

Atlantic: Schools close, power outages amid vicious storm



Down into Texas, Houston shatters 40-year “trace record accumulation”, with a two inches of snow, but look at these temperatures, it’s Southeast Texas before winter.

November 11, 2018

Trace of snow in Houston shatters almost 40-year record



Freeze warning issued for Wednesday morning

HOUSTON - A trace of snow in Houston on Tuesday broke a record that has stood since 1979 as freezing temperatures begin to overtake the region.

According to the National Weather Service, the flurries observed at Bush Intercontinental Airport on Tuesday broke the record for earliest observed snow in Houston. The previous record was set on Nov. 23, 1979.



Freeze warnings and gale warnings along the coast. They're advising people to bring their pets and plants in already?



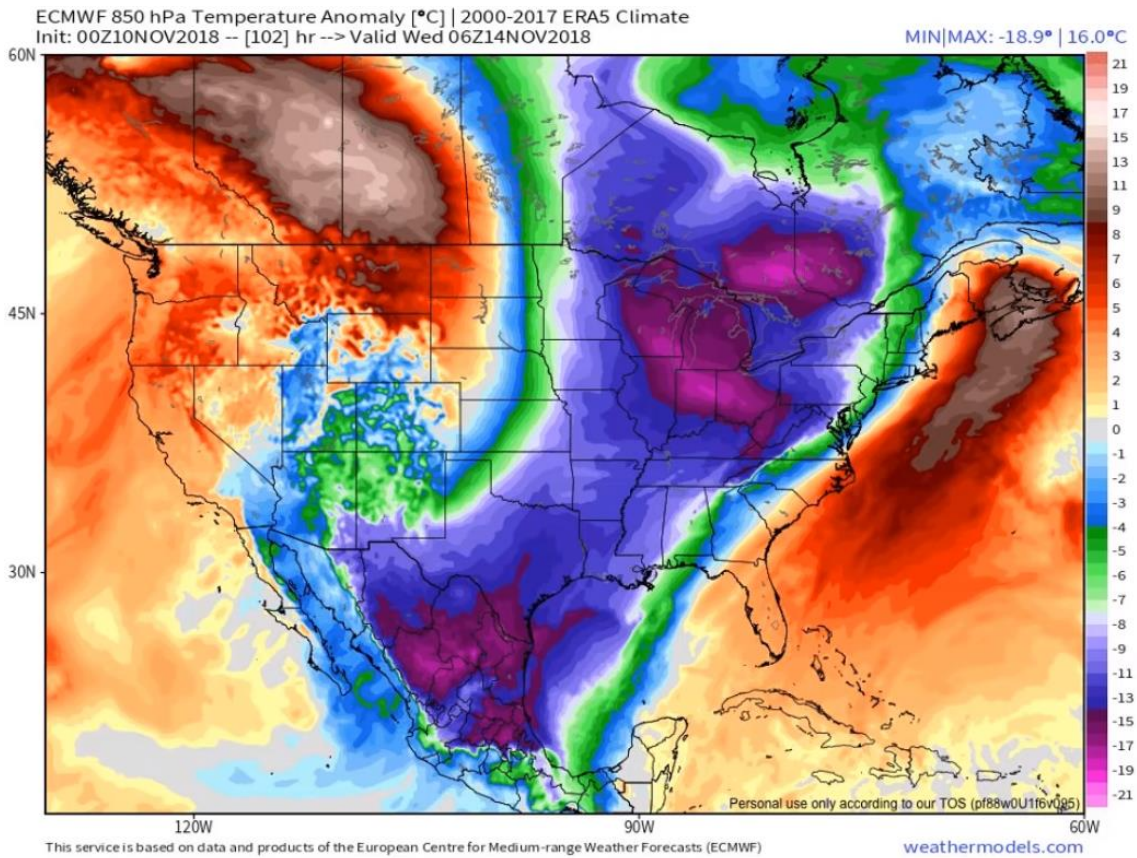
Look at some of these low temperatures. 25 degrees Fahrenheit, and it's only the middle of November. Texas would not expect these temperatures until mid-January. So the cooling is happening two months faster than it normally does.



Arctic vortex pushing to the deep, you can expect cooler temperatures all through the Southeast US. They've already been delayed in harvesting due to excessive rainfalls, and now we're going to add the cold on top.



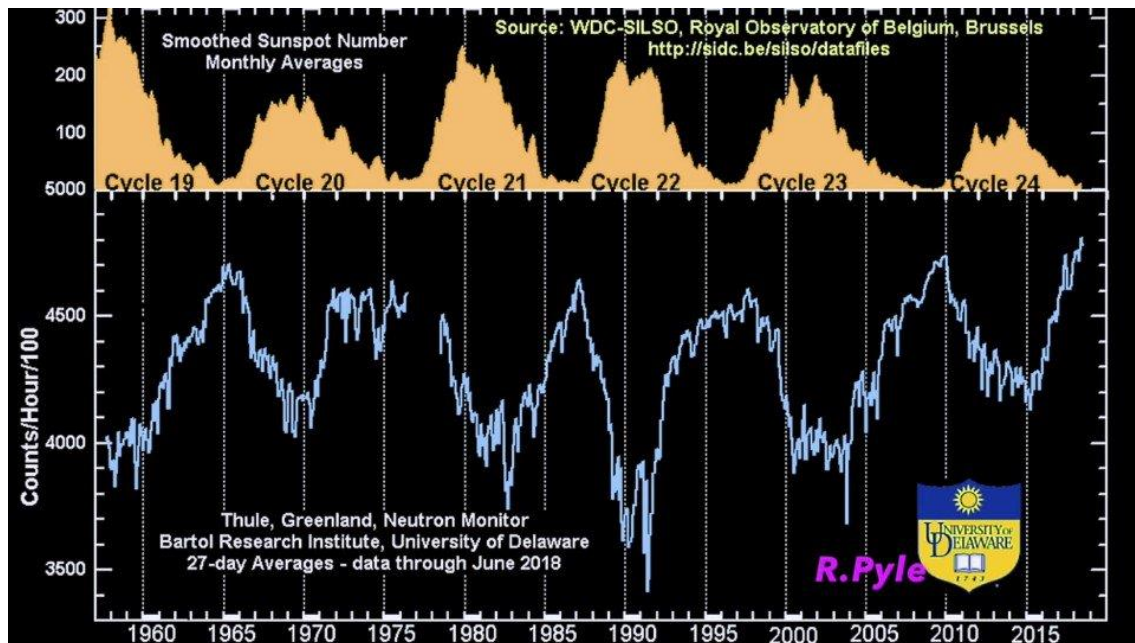
To give you a visual of this cold, of how far it's extended and how low these temperatures are in degrees Celsius, the dark purple is the coolest. Exceptional that record cold is extending all the way down into Southern Mexico.



Looking at how much snow fell last week in Amarillo, Texas. Do you think this is normal for Autumn?



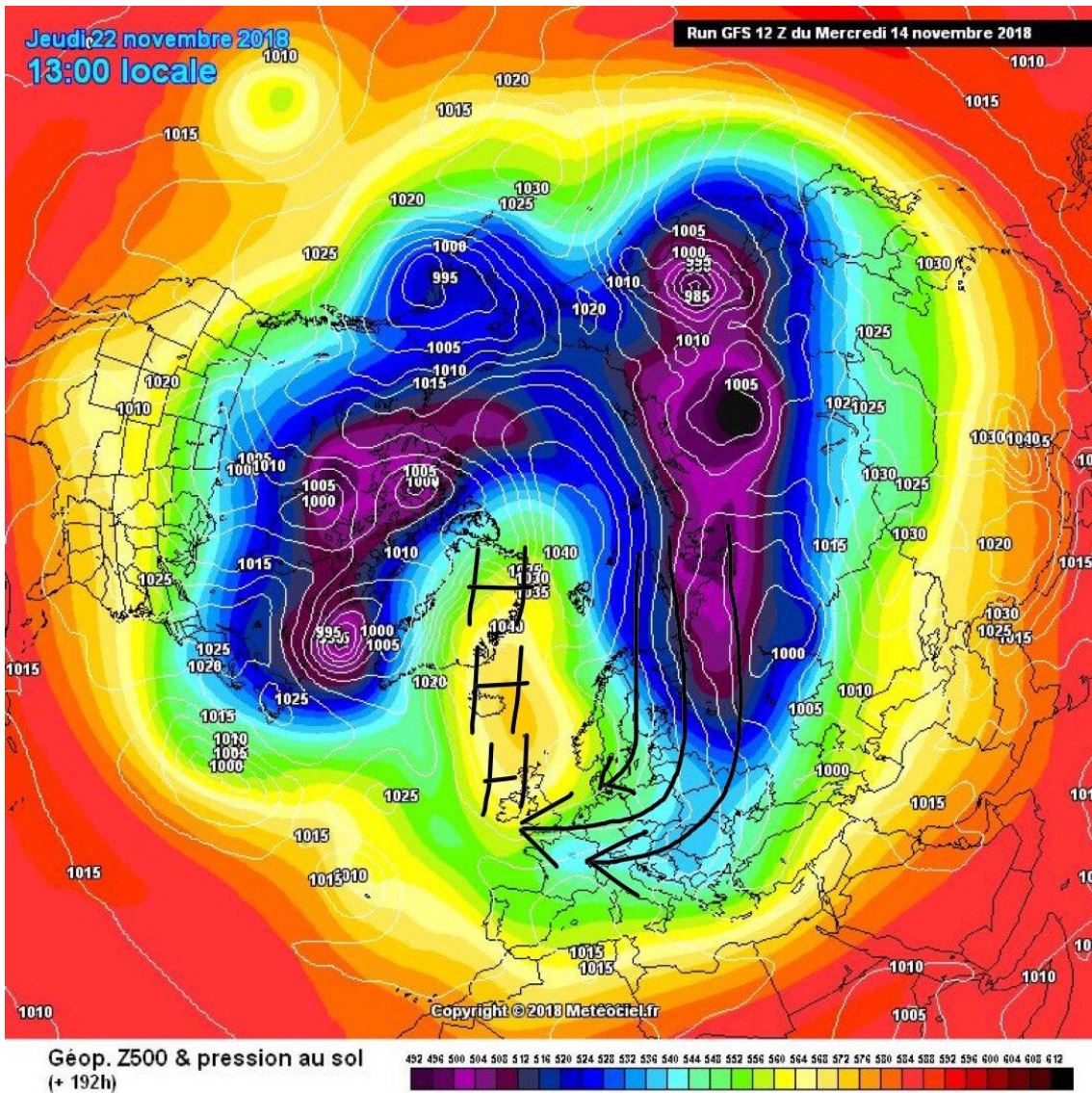
Another effect that's happening as our Magnetosphere weakens due to electromagnetic changes on our Sun, the magnetic fields on Earth are weaker allowing more galactic cosmic rays to penetrate the atmosphere. These rays are now increasing to the highest ever recorded in the Space Age. More galactic cosmic rays mean, heavier cloud cover.



(BELOW) Looking directly over the North Pole in the Northern Hemisphere, where you see blue and purple, that is cold. Dark black over Central Asia is a record cold. Guess where the media is going to focus, can you see where those H's are, for high pressure systems? Those are a little bit warmer, corporate media is going to focus on that exclusively. Forget all the record cold, snowfalls and highest wind velocity ever measured, media is going to focus on the heat. Guaranteed.



[Click Here to Learn More](#)



Speaking of such, the heat blob is descending over Europe & Scandinavia. Notice a lot of strange wind patterns in there? They're ex-cyclones, rolling over the UK. Cold blobs, down in the Adriatic.

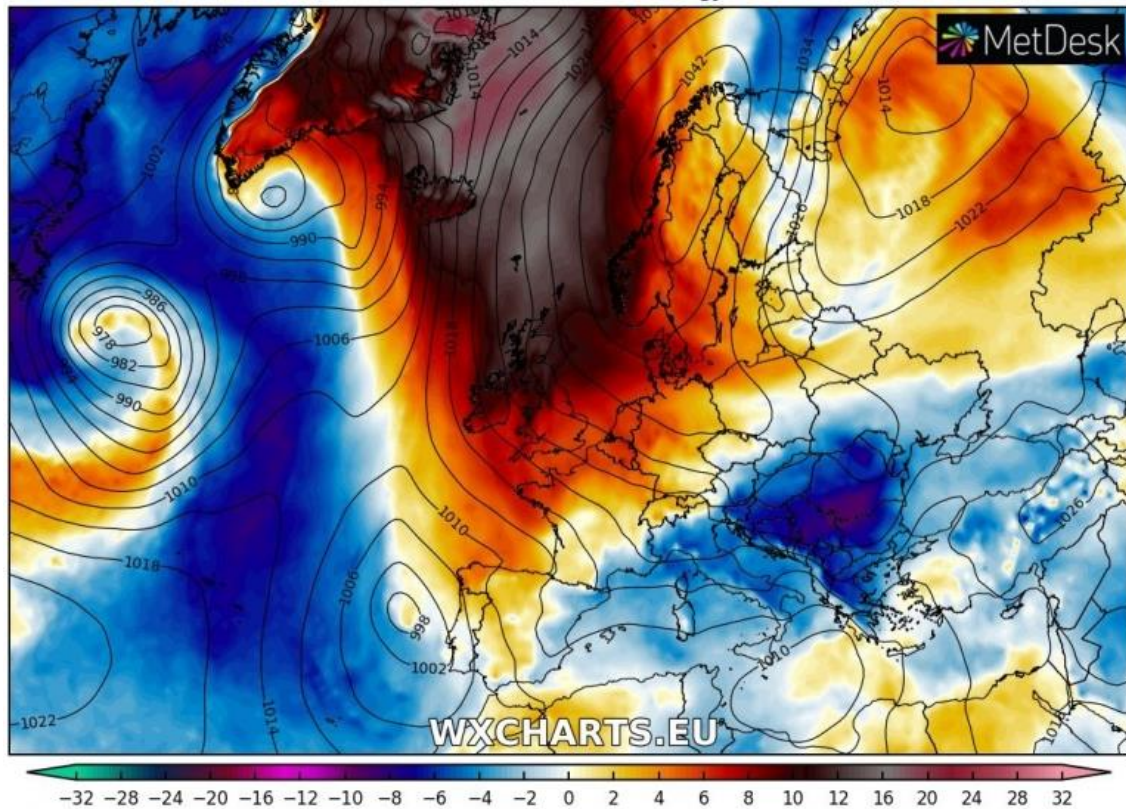
850 hPa Temperature Anomaly (°C)

ECMWF HRES 0.1°

Base: CFSR 1979-2010 climatology

Run: Thu 15 Nov 00Z

Valid: Sun 18 Nov 00:00 UTC



As we move forward, remember that the dark purple on the left they won't talk about is the record cold that's about to descend over Europe. Why isn't corporate media giving balance to record cold or why are there such large differences in the temperature gradient, called temperature inversion between the super-hot and the super-cold? What is causing that?

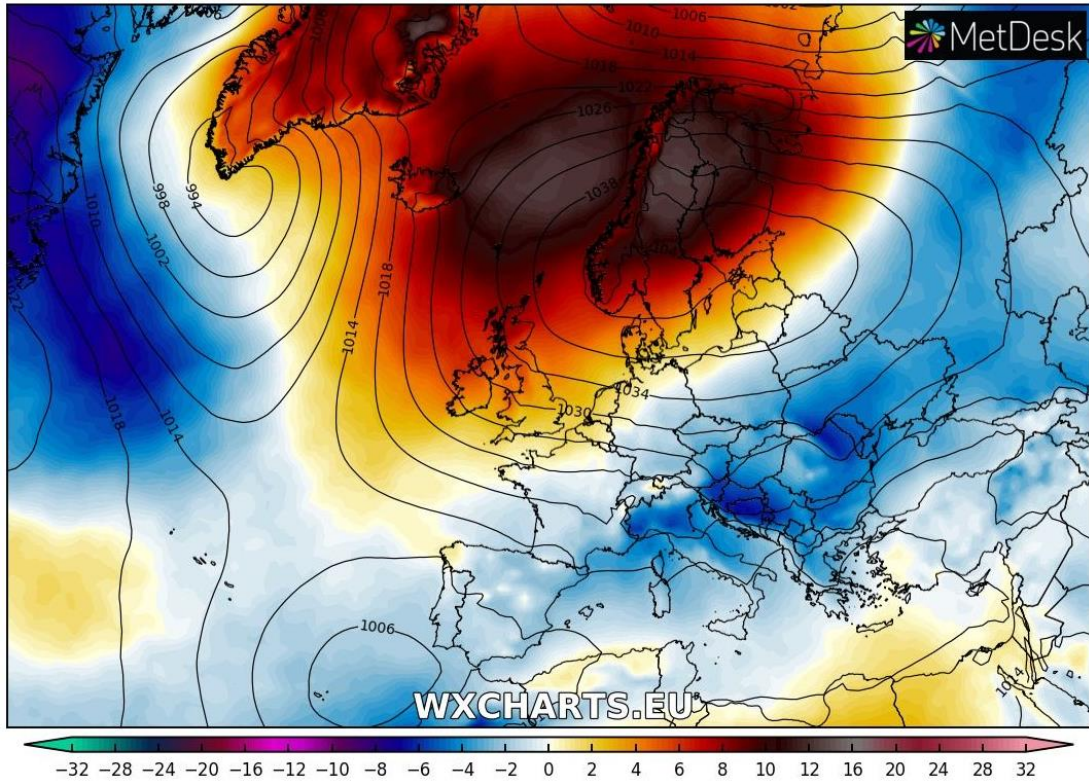
Jet Streams are shifting due to a weakening magnetosphere, yet the IPCC is still telling you it's CO2 that's causing this. In my personal opinion, I think we need to look at other causations and we also need to start conversations about why is this happening. And look at it from both sides.

850 hPa Temperature Anomaly (°C)

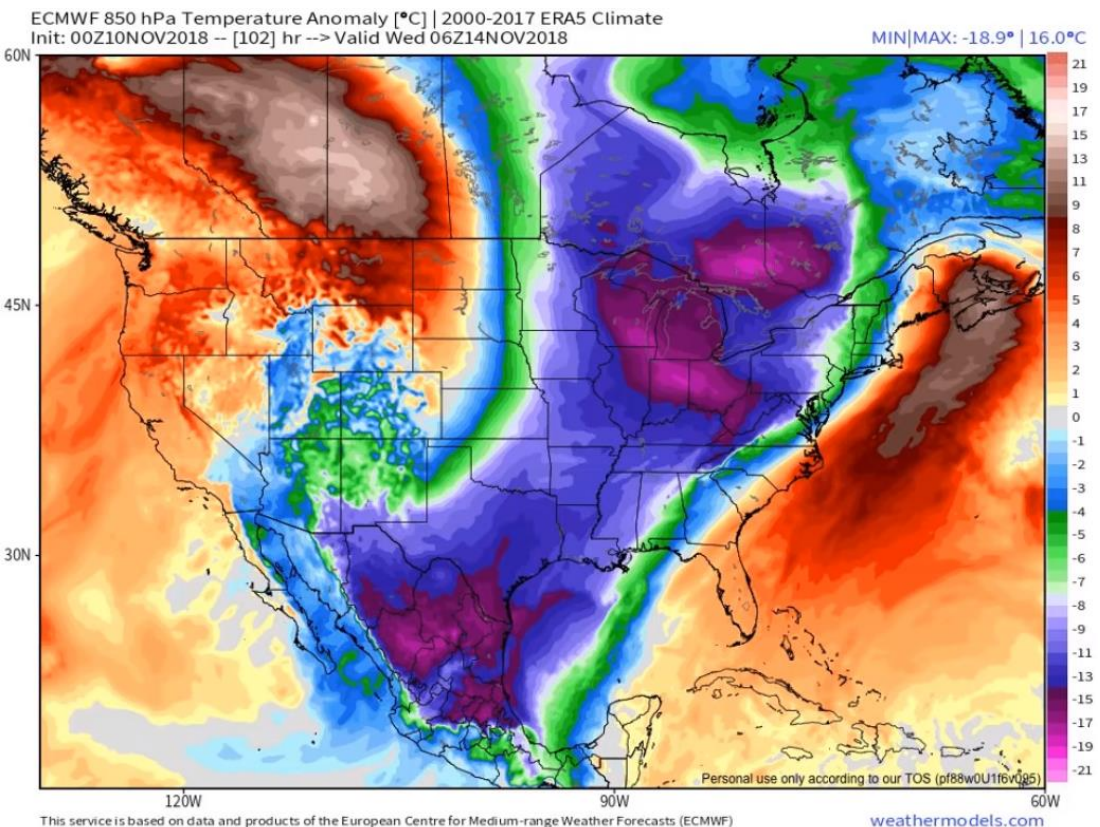
ECMWF ENS 0.2°

Base: CFSR 1979-2010 climatology

Run: Mon 12 Nov 12Z
Valid: Mon 19 Nov 12:00 UTC



IPCC said it's CO2, great they have been putting out information for 40 years, yet a lot of the predictions are not panning out. But what about equal debate time for those in the Electric Universe and persons talking about the Grand Solar Minimum? These are expected GSM effects and they are happening now. It's affecting our food production globally.



The IPCC still does not want to talk about changes being driven by our Sun. Changes that you're seeing; you should expect heavier larger hail coming down from the skies as we roll through to the end of this cycle around 2032 to 2035.

Hailstones are going to be 5 pounds each. This is what happened during the Maunder Minimum, where they talked about three to five pound hailstones with the storm fronts. The exact same type of events that you're seeing with extreme heat on one side of the front and extreme cold on the other. When they collide, they create storms which people ran for their lives. We can see the same set-up coming again.



severe-weather.EU @severeweatherEU · Nov 11

World Weather Very large hail (up to 7 cm across) in Los Hornillos, Cordoba, Argentina yesterday, November 10. Report: Meteorología de la República Argentina



Over to Russia for more record cold, it's -41 degrees Fahrenheit, that's 63 degrees below the freezing point. They don't get these temperatures until mid-January. This type of cooling is two months early.



severe-weather.EU @severeweatherEU · 18h

Oymyakon, Russia, November 10. Report: @SevereWeatherRU RU



-35 degrees Celsius, and it's continued since the first week of November marching onward. Winter has set there with January and February temperatures in early November.



severe-weather.EU @severeweatherEU · Nov 7

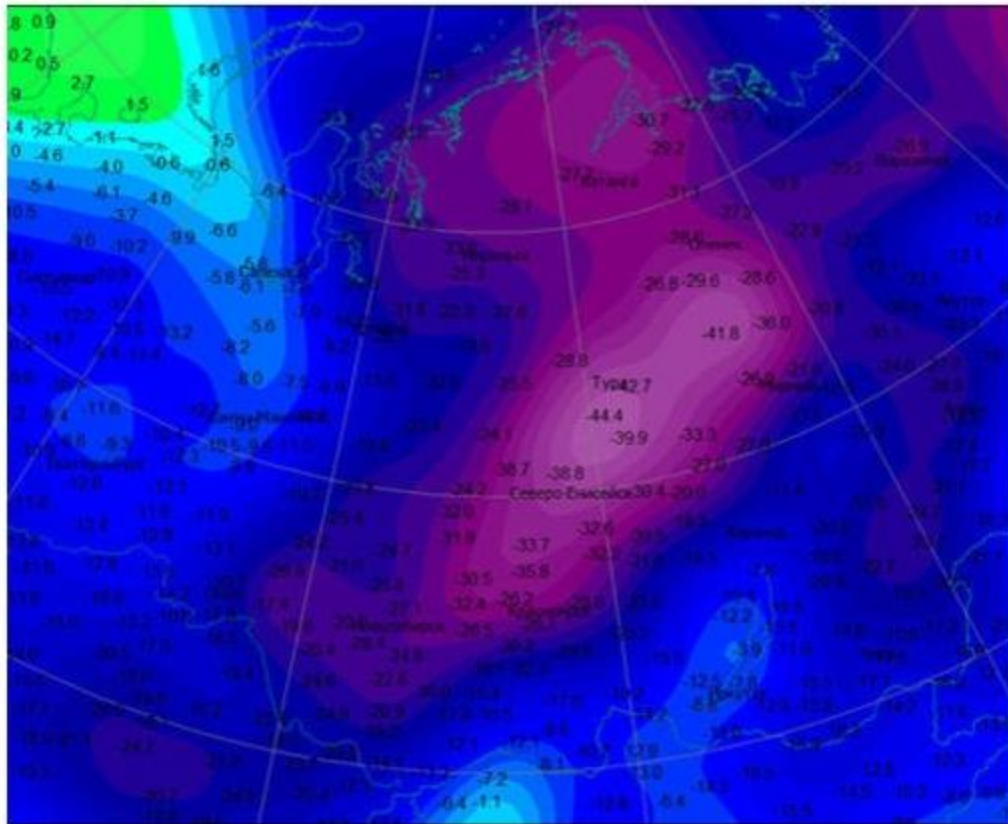
Oymyakon, Russia at -35 °C this morning, November 7 (Nov 8 local)! Report:

@SevereWeatherRU



Looking at the map you can see where this extreme cold is. Same area of that black circle I showed on the millibar map earlier.

Krasnoyarsk, the thermometer dropped to -36°C . In Evenkia, the first 40°C of the season



© Gismeteo

The minimum temperatures on November 12, 2018.

When Russian media picks up and talks about how rare and how cold it is, that it's record cold in their country this early, then maybe it's time to take a little notice. It happened last year, and it happened the year before as well, so my projection would be that it's going get colder earlier next year with even deeper temperatures in 2019-2020.

The collapse of cold in Siberia: 40-degree frost hit

November 12 14:38

At the end of last week in the south of Siberia there was a collapse of cold. During the day, the temperature dropped from 0 to -20. An interesting phenomenon was observed - the reverse daily temperature variation, when it is warmer at night than during the day. For example, in Novosibirsk on Friday, November 9, the temperature was +1 at midnight, and already at noon thermometers showed -12.



Al look back at wildfires in California. A sight to behold right here with causes ranging from forest mismanagement where they didn't clear-cut some of the dead fall, to the power companies creating sparking off the lines, to arsonist, to droughts caused by Global Warming and everything in between.



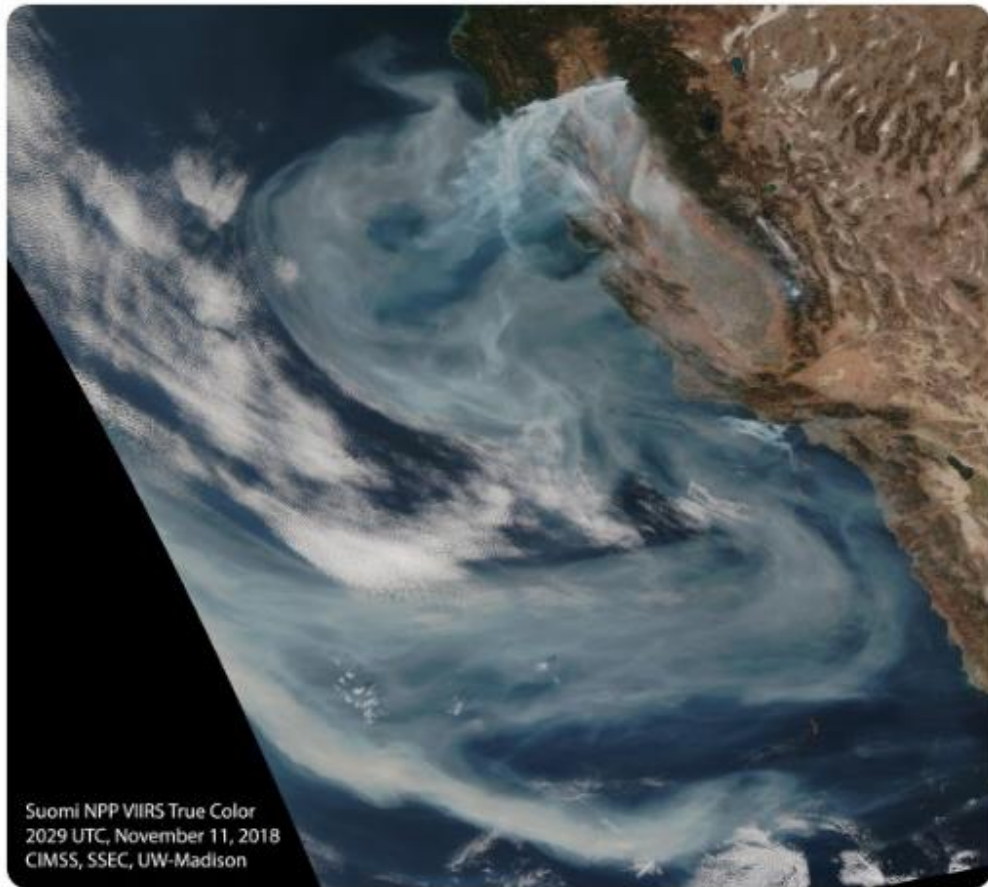
Regardless, the smoke coming off is equal to several volcanoes of ash emissions and it's going to cool wherever this smoke goes. As we get into November, if the fires continue for weeks, this smoke gets blown inland with some of the air flows off the Pacific so you could expect regional cooling and record snowfalls in some areas.



UW-Madison CIMSS @UWCIMSS · Nov 11

The smoke extent & pattern out over the Pacific Ocean is absolutely incredible.

[#CaliforniaFires](#)



Michele Tucker, images from the airline. I thought this was spectacular! You can actually see the mountain ranges below. Let me widen that out for you.



Michelle Tucker @mictuck · Nov 9

A few shots of the California wildfires from above. #CaliforniaWildfires
#CaliforniaFires #WoolseyFire

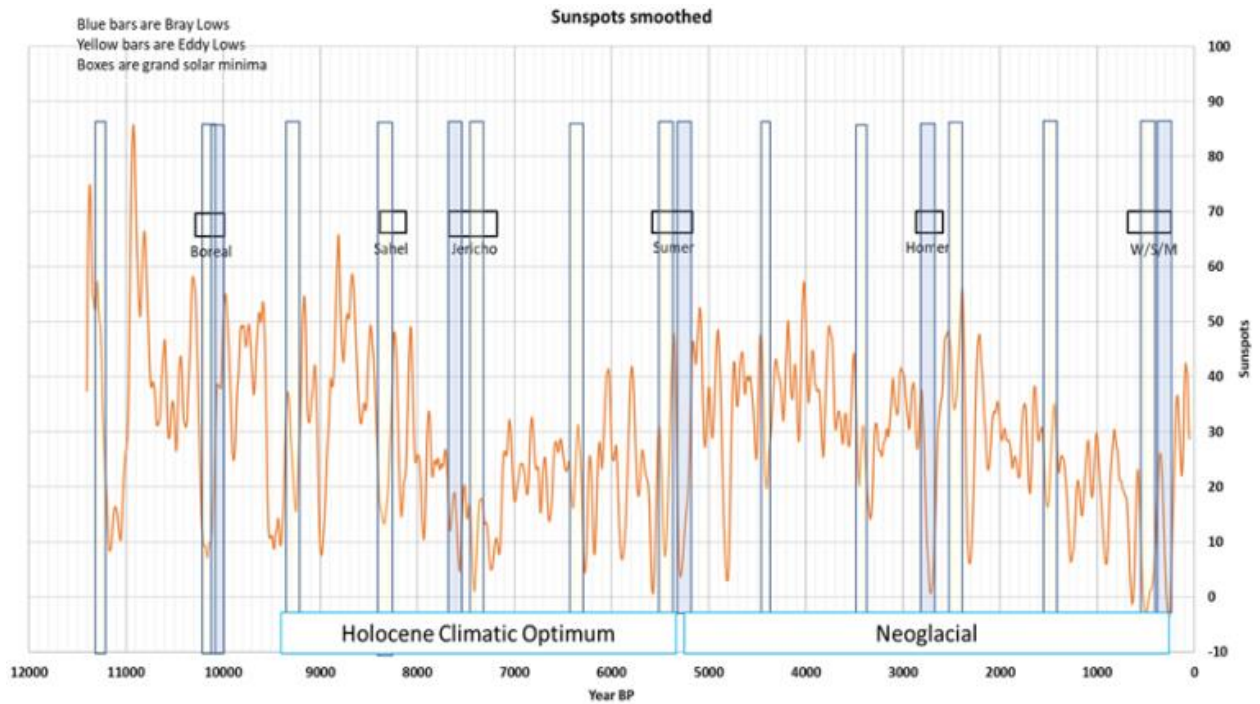


Here we are the same thing. Say that they're cruising altitude is 30,000 feet. How high is that ash and smoke reaching into the atmosphere? Similar to a volcanic smoke plume going up 30,000 to 40,000 feet.



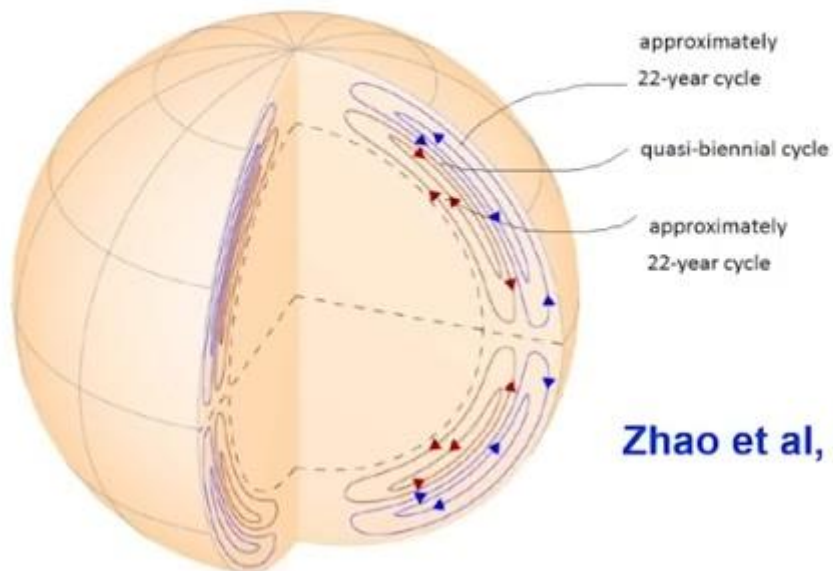


It's all about long-term climate change and trying to map out cooling cycles from the mountains of previous data when the Earth cooled in the past. We're heading into global cooling. Cats out of the bag now. Valentina Zharkova has come clean and talked about the GSM amplification dates as her team mapped out cycles reaching back 500,000 years.



Back 500,000 years on mathematical models taken into consideration, the magnetic variability which I showed you in that first slide, shows how the magnetic waves on the Sun cancel and create cooling conditions on our planet.

Dynamo in Two-Layer Medium HMI/SDO helioseismic observations



Zhao et al, 2013

Some of the conclusions from her talk: Grand Solar Minimum effects will be fully visible to everybody on this planet so intensely that what we're seeing right now is just merely a taste of what's to come.

These record cold temperatures in Autumn reminiscent of January and February occurring two months early, can you imagine what it's going to be like in 2020 moving forward?

The bottom of this cooling event won't be until 2030 or so and she's pointing exact dates for global food shortages to be in 2028 to 2032. Now you know the losses are going to occur far before that time. This will be at the low period of global crop yields from 2028 to 2032.

I'm going to say less than 20% of what we're producing now will be grown at that time. Let's say now we're getting a hundred tons globally, at that point we're going to be getting 20 tons.

Upcoming modern Grand Minimum

- To occur in **2020 – 2055**
- This is a unique event in solar-terrestrial connection
→ reveal the pros and cons of solar dynamo models
- Big impact on the terrestrial temperature via SI and reduction of magnetic field
- Shortage of vegetation periods can lead to possible food shortage in 2028-2032
- Need inter-government efforts to avoid disasters

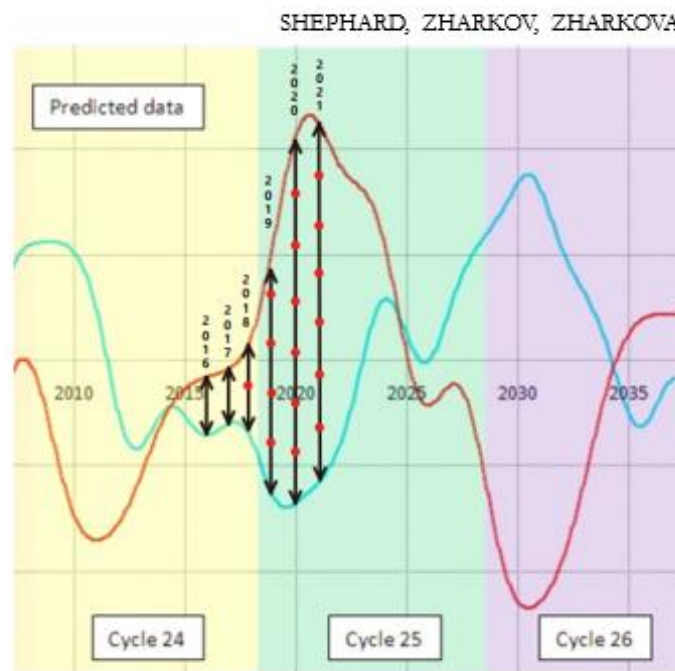
GWPF, London, 31 Oct 2018

Those losses are not going to come in just the first year. They're going to start mounting right now and we're already starting to see that, everywhere you look, both the Northern and Southern Hemispheres.

These crop losses are mounting, so here's your timeline below. I encourage you to take steps to prepare for what's coming. The world wakes up by 2020 and at that point everybody's going to try to get ready at the same time. Meaning they're going to pull their money out of the banks, they're going to cash in their stocks, their 401k's.

The economic system is going to collapse under the changing spending habits when foods are more expensively priced and people aren't spending as much on disposables, because they're getting ready for the Grand Solar Minimum.

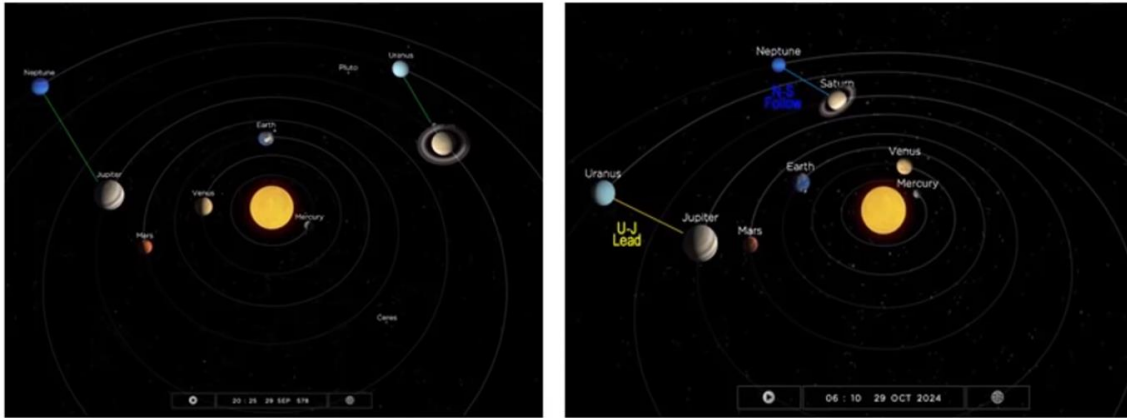
The shift of our global weather patterns are set to amplify 2x from July-Dec 2017, and from 2018-2019 a 4x shift, with another jump up as the spread widens to 6x in 2019. (I explain this in detail on pages 38-41)



David DuByne ADAPT 2030 Channel YouTube | Mini Ice Age Conversations Podcast on Soundcloud / Stitcher Radio / iTunes

There's going to be a huge diversion of capital flows and in which companies and which industries. The economy is going to shake first. But will include population migration, extreme weather events, and crop losses. Played out again and again in time. It's a repeating cycle.

For me it's quite liberating because I know the timelines. So now I'm enjoying every day. I'm living more in the moment each day. The things I have in front of me, I appreciate so much more, knowing that this is here on our doorstep.



Comparison the 578-579 AD Justinian Plague planetary geometry aside 2023-2024 AD alignment
 Grand Solar Minimum maximum cool period 2023-2024 AD
 By David DuByne ADAPT 2030 Mini Ice Age 2015-2035 Series YouTube

Thanks for reading. I hope you got something out of the article. If you like this type of analysis and research, I also produce the tri-weekly podcast Mini Ice Age Conversations anywhere you can find a podcast hosted across the net.

Join ADAPT 2030 NEWSLETTER <http://www.oilseedcrops.org>

Mini Ice Age Conversations Podcast

iTunes: <https://itunes.apple.com/us/podcast/adapt2030>

Soundcloud: <https://soundcloud.com/adapt-2030>

Libsyn: <http://adapt2030.libsyn.com/>

MIAC #122 Would you tell the population of the impending changes on Earth?

<http://adapt2030.libsyn.com/miac-122-would-you-tell-the-population-of-the-true-impending-changes-on-earth>

ADAPT 2030 & My Patriot Supply: Taking the Fear Out of Difficult Situations 2-Week Food Supply with 92 servings

www.preparewithadapt2030.com

ADAPT 2030 Amazon Grand Solar Minimum Book Store

<https://www.amazon.com/shop/adapt2030>

*** Today's Story Links ***

Trace of snow in Houston shatters almost 40-year record

<https://www.click2houston.com/weather/messy-monday-commute-winter-blast-coming>

Cold and Heat over Europe

<http://www.severe-weather.eu/mcd/weekly-pattern-overview-across-europe-powerful-ridge-over-the-arctic-region-and-colder-and-ese-europe-nov-13-19th/>

http://www.severe-weather.eu/wp-content/gallery/weather-maps/850temp_anom_20181112_12_168.jpg

New Zealand Late Spring snow

<https://www.msn.com/en-nz/news/national/watch-snow-in-the-south-island/ar-BBORe6O?ocid=UP21DHP>

Shelf cloud Croatia

<https://pbs.twimg.com/media/Dr89ikIXQAEOjJa.jpg>

Record low temperatures NE USA

<https://pbs.twimg.com/media/DsBGU4WkAEx6Th.jpg>

Siberian temps plunge to -40°C (-40°F)

<https://www.iceagenow.info/siberian-temps-plunge-to-40c-40f/>

<https://www.gismeteo.ru/static/news/img/src/29699/0538de16.jpg>

<https://www.gismeteo.ru/news/klimat/29699-obval-holoda-v-sibiri-udarili-40-gradusnye-morozy/>

California wildfire from airplane picture

https://pbs.twimg.com/media/DrImOHEUwAAKOZ_.jpg

<https://pbs.twimg.com/media/DrImOHDU0AAyM9b.jpg>

<https://pbs.twimg.com/media/DrqObX7WsAAO46u.jpg>

130+cm of snow has fallen here and winter hasn't even begun

<https://www.theweathernetwork.com/news/articles/record-october-snowfall-four-feet-over-100-centimetres-happy-valley-goose-bay-newfoundland-labrador-active-storm-track/116629>

<https://www.theweathernetwork.com/news/articles/atlantic-canada-potential-weather-bomb-strong-fall-storm-heavy-rain-snow-damaging-wind-maritimes-newfoundland/116383/>

Texas record early snow

<https://www.click2houston.com/weather/messy-monday-commute-winter-blast-coming>

ADAPT 2030



[ADAPT 2030 Mini Ice Age 2015–2035 Series on YouTube](#)

*** ADAPT 2030 Social Media Links ***

1.) PATREON www.patreon.com/adapt2030

2.) BITCHUTE <https://www.bitchute.com/hashtag/adapt2030/>

3.) STEEM <https://steemit.com/@adapt2030>



ADAPT 2030 (36)
Covering Grand Solar Minimum Intensification, Crop Losses, Cold
Weather Anomalies & Stories the MSM Refuses to Discuss
400 followers | 120 posts | 5 following
oilseedcrops.org | Joined August 2016

<https://steemit.com/@adapt2030>

*** Stories also on STEEMIT ***

4.) *** ADAPT 2030 True Leaf Market Link ***

5.) **Mini Ice Age Conversations Podcast**

Libsyn: <http://adapt2030.libsyn.com/>

iTunes: <https://itunes.apple.com/us/podcast/adapt-2030-mini-ice-age-conversations/id1200142326>

6.) FB <https://www.facebook.com/Miniiceage>

7.) TWITTER <https://twitter.com/adapt2030>

8.) YOUTUBE www.youtube.com/user/MyanmarLiving



Medium

*** Stories also on Medium ***

9.) MEDIUM <https://medium.com/@globalcooling>

10.) MINDS <https://www.minds.com/adapt2030>