

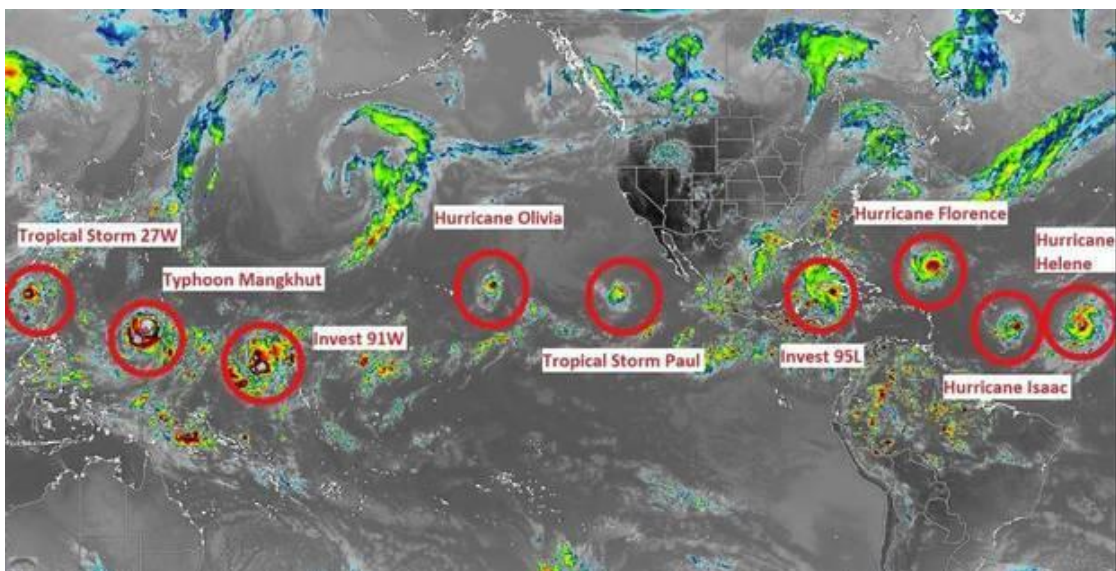
# Civilization Timelines Wrong Thule/Norse/Vikings & 1880's

## Sunspot Repeat

[— ADAPT 2030 Video Link —](#)

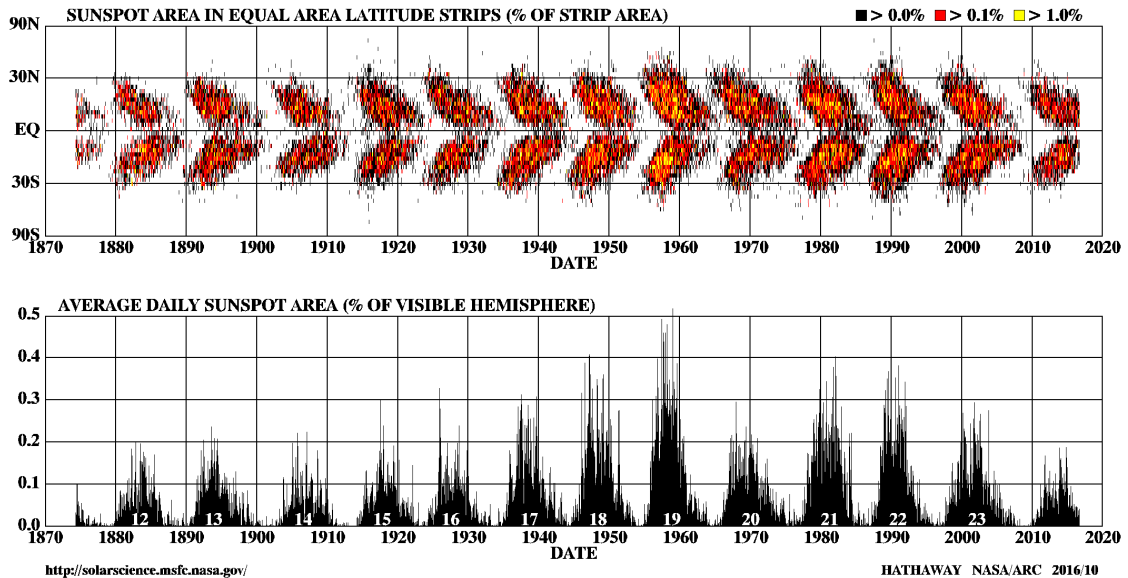


Taking a look at least nine tropical systems along the equatorial bands and tropical waters of our planet through three different oceans. What trends do we need to trace back in time to find this similar cycle? Media doesn't talk about that in news headlines, they like to say "there's a lot of storms due to global warming", but they don't tell you it's actually occurred before in the 1970s.

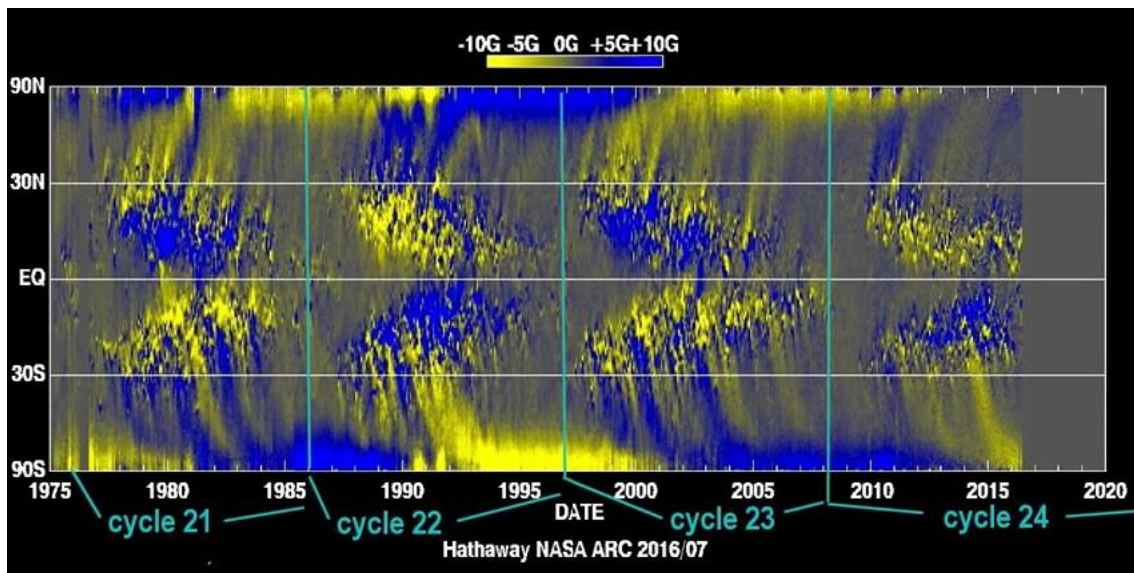


Daily sunspot area butterfly diagram: This is how sunspots form around the equator into the solar minimum and then and spread toward 30 degrees north or 30 degrees south as we get into Solar Maximum on the 11 year cycle, they've been following this since the 1870s.

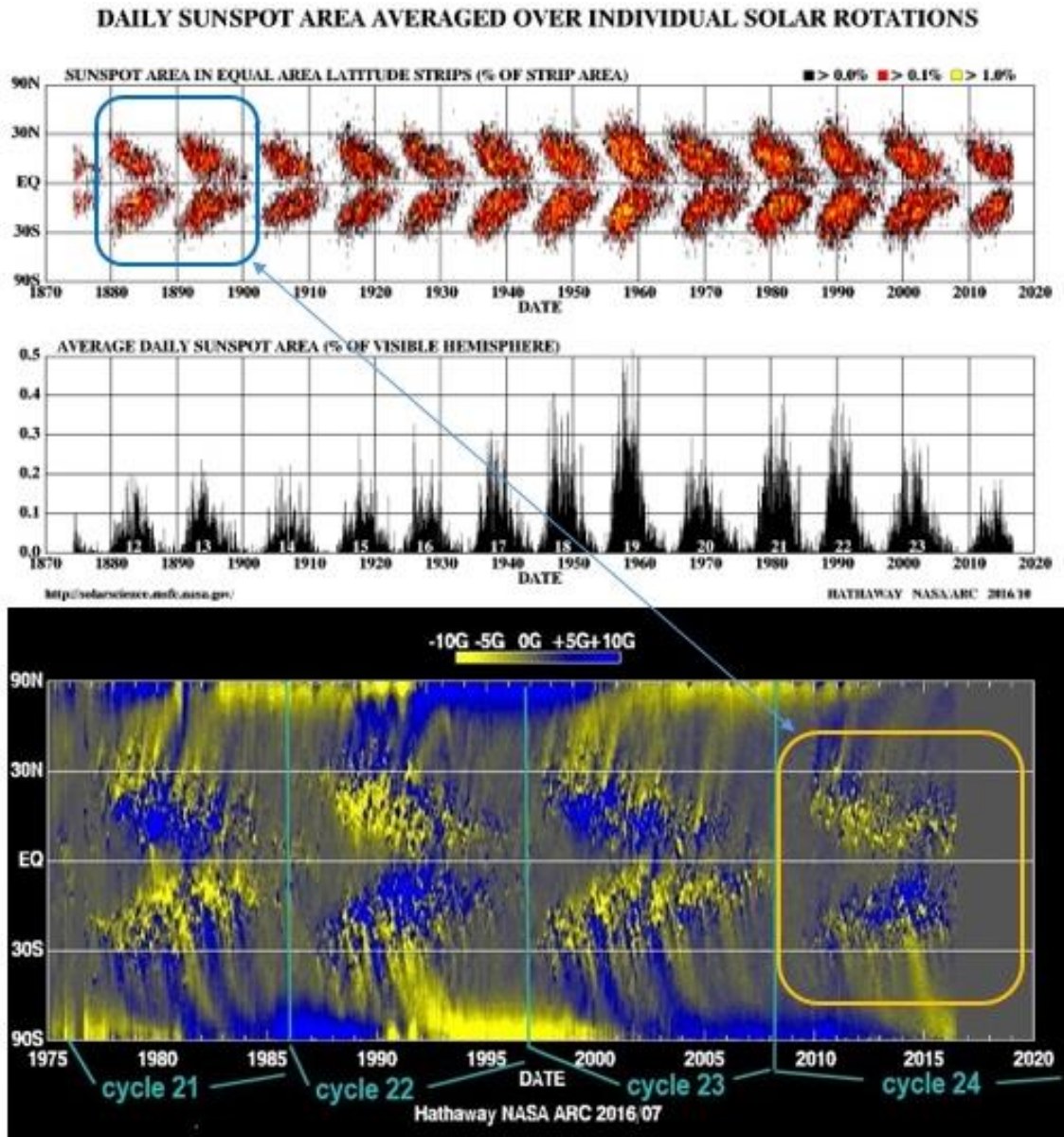
### DAILY SUNSPOT AREA AVERAGED OVER INDIVIDUAL SOLAR ROTATIONS



We can bring it into the modern era where satellites give spectacular analysis of the same butterfly diagram, broken down by the solar cycles and once you overlay them.....



Far right on the bottom is where we are, the other box that's right now, top left is where we have been in the 1880, notice the similarity. As we begin Solar Cycle 25 in a couple of years, that is going to go absolutely off the chart where we have not seen this low of solar activity in over 200 years.



If you going to believe in something even if humans only contribute point zero zero zero zero one two about the spirit gases, you have to make up everything Just Tax It. Thanks AI.



Michael Holiday

September 8 at 1:08 PM



You know they're the experts of the experts of the experts of everything and IPCC bureaucrats tell us through their experts that we should only trust them because they're experts. Yet, they have our civilization timeline mixed up, it's actually backwards for the Dorset to the Thule to the Vikings. Previously they thought the Vikings had taught the Dorset & Thule how to spin yarn from arctic animal hair.

# Research upends theory that Vikings taught Inuit spinning



And the techniques researchers have developed to show that ancient Dorset and Thule people knew how to spin yarn centuries before the Norse were thought to have taught them could change the way archeologists think about Arctic history.

Arctic history is totally reversed, literally it's 180 degrees from what you've been taught or what is in the history books existing right now. Researchers were shocked to figure out that as early as 100 to 600 AD the Thule and Norse had already perfected yarn spinning from animals and also at extracting oil out of arctic animal hair for daily use.

# Research upends theory that Vikings taught Inuit spinning

The origin of the yarn spun from animal hair and sinew had bedevilled Arctic scientists for generations. Most assumed it was a skill picked up from Viking colonists who sailed west from Greenland, establishing a community at L'Anse aux Meadows in Newfoundland about 1,000 years ago.

"They clustered into a period from about 100 AD to about 600-800 AD — roughly 1,000 years to 500 years before the Vikings ever showed up. (The Dorset) are manipulating the kinds of fibres you find in your environment at least as early as 100 BC."

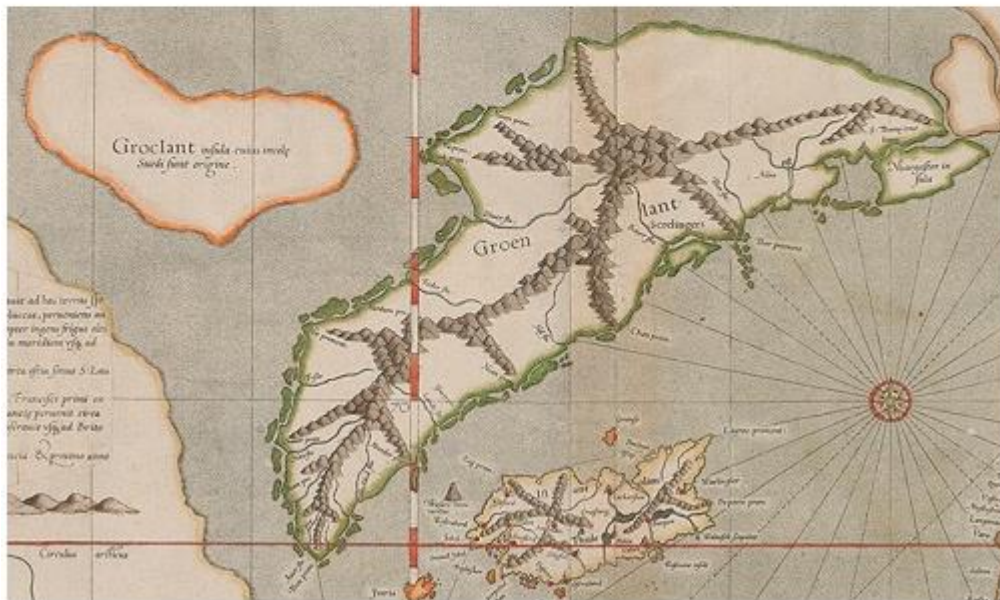
When the Vikings voyaged up to Greenland, they were taught this skill by the local indigenous peoples living there, researchers had it completely reversed, the Vikings may have picked up a few tricks from the Thule.

Winnipeg Free Press

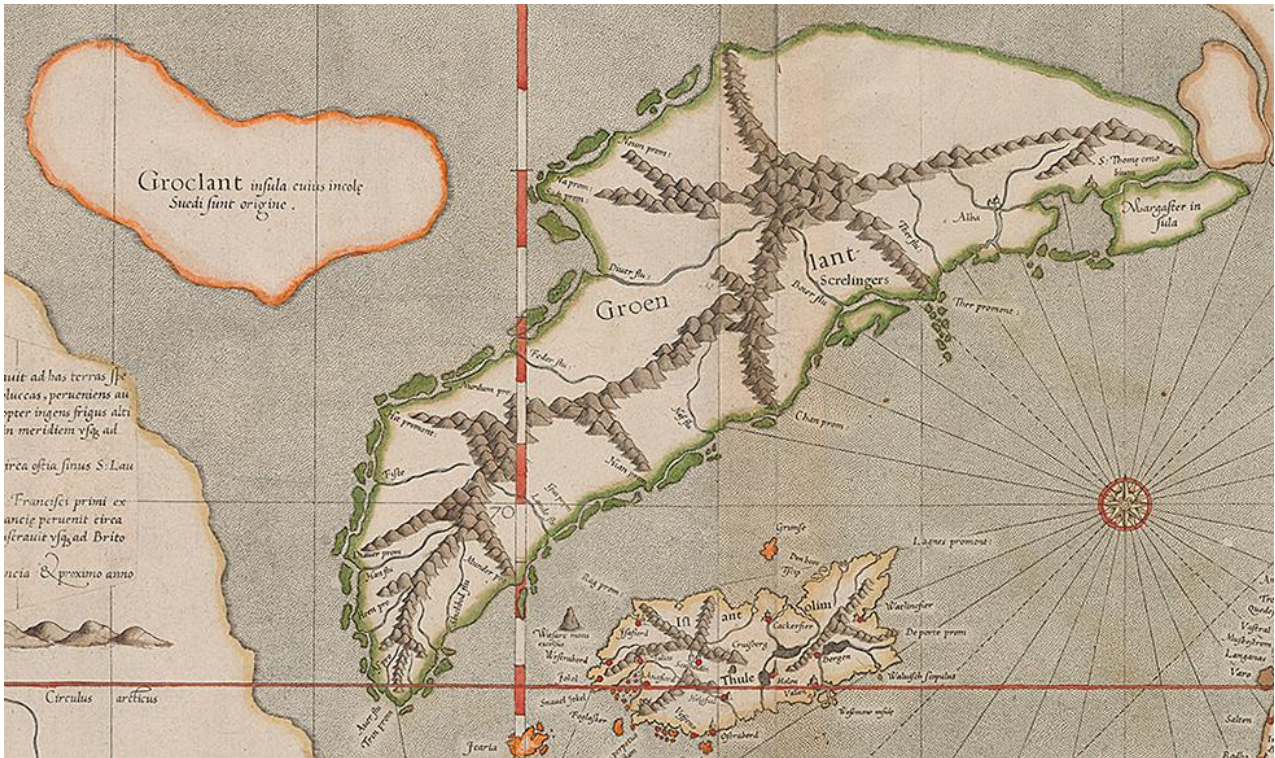
07/22/2018 By: Bob Weber, The Canadian Press

## Research upends theory that Vikings taught Inuit spinning

In fact, the Vikings may have picked up a few tricks from the Thule. It's not conclusive, but Hayeur Smith said there's some evidence to suggest Norse weavers learned how to use hair from bears and foxes, as well as from sheep and goats, from the people they referred to as Skraelings.



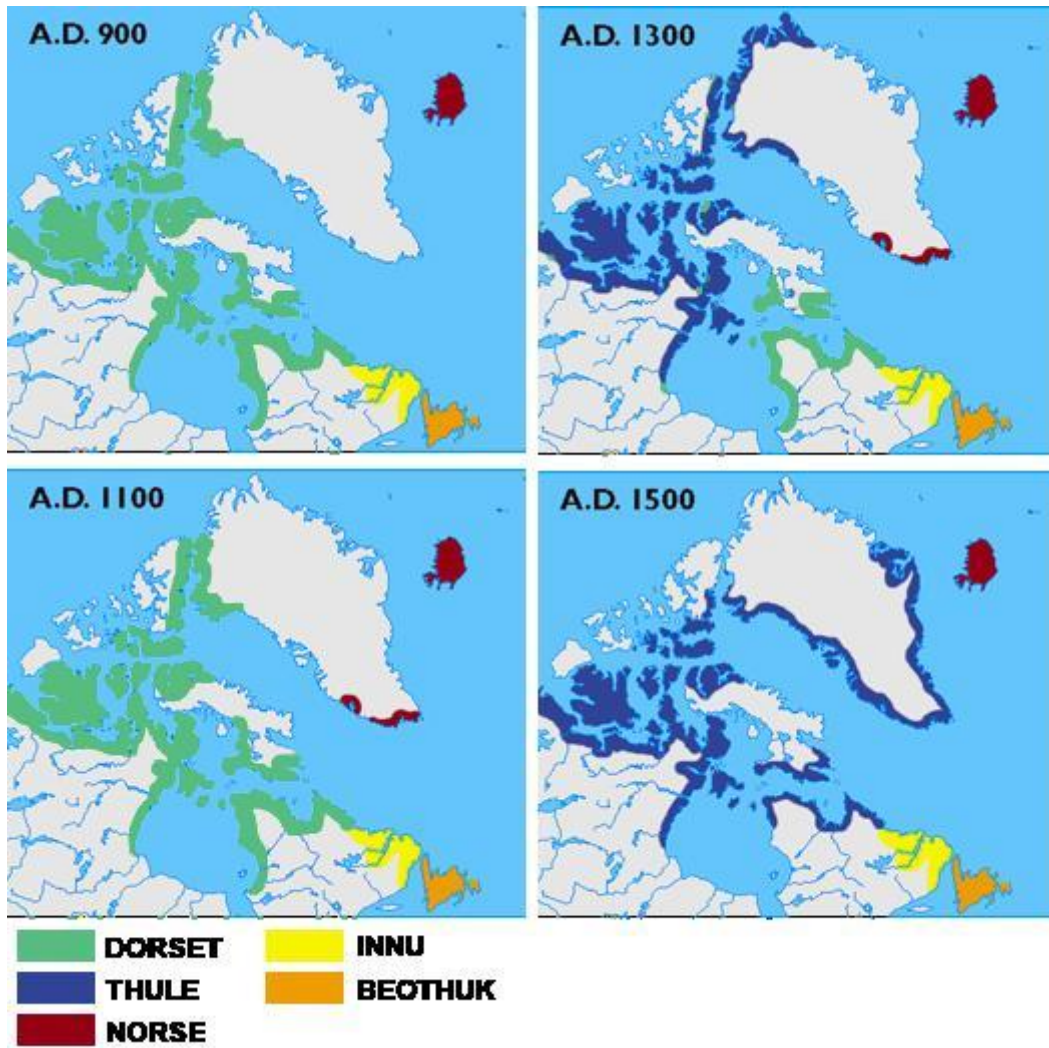
I really like older maps, so I'll wide this out for you. This is what circa 1700 AD maps look like of Greenland.



(BELOW) Taking a look at the spread of the Dorset the Thule / Norse from 900 AD onward to 1500 AD, there must have been some climatic change because you can see the dominance has switched from Dorset 900-1100 AD to Thule through 1300-1500 AD.



[Click Here to Learn More](#)

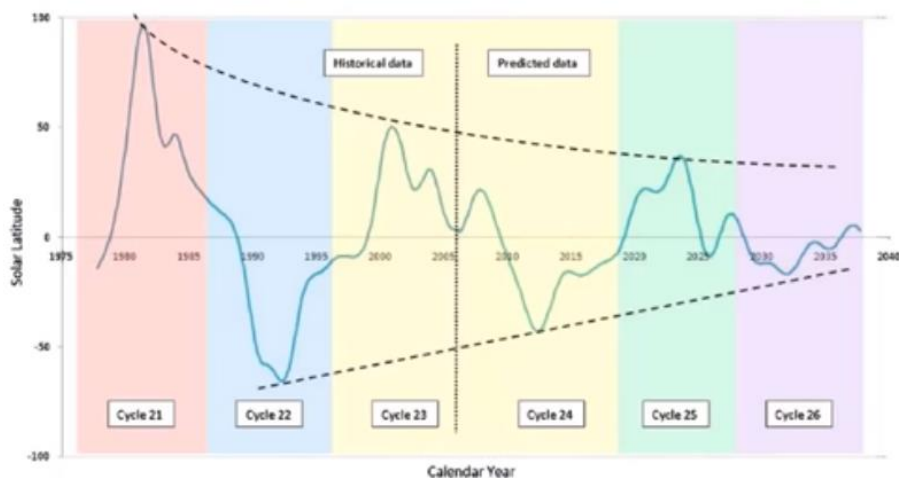
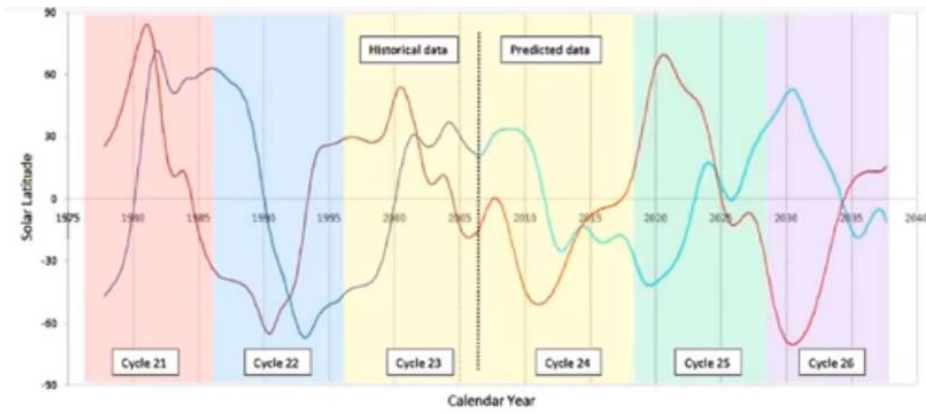


This old map is a keeper right here, monsters of the deep and the beliefs we used to have stated as fact when the Earth used to be flat, and our timelines the Vikings taught everybody else, well everything just reversed.





So where does this take us into the whole controversy of repeating cycles of time with Grand Solar Minimums on cycles affecting society and crop production globally.



If you like this type of analysis, take it on the go with Mini Ice Age Conversations Podcast, thirty minutes piecing together how the intensifying Eddy Grand Solar Minimum will affect your life over the next 5 years.

\*\*\*ADAPT 2030 My Patriot Supply Links: Take the fear out of difficult situations\*\*\*

2-Week Food Supply: (1,500+ calories/day with 92 servings)

[www.preparewithadapt2030.com](http://www.preparewithadapt2030.com)

Hearty Soups Kit with 104 servings <http://bit.ly/2A4c1hk>

\*\*\* ADAPT 2030 True Leaf Market Link \*\*\*

<http://www.pjtra.com/t/SkNITkxPS0xDR0xPRkdLQ0dLSUdOSw>

\*\*\* Today's Story Links \*\*\*

Research upends theory that Vikings taught Inuit spinning

<https://www.winnipegfreepress.com/art...>

Greenland peoples movement <https://portlets.arcticportal.org/gre...>

MOST storms in a decade swirling <https://www.theweathernetwork.com/new...>

MIAC #105 Substantial Crop Losses Globally & The Economics of Rising Food Prices

<http://adapt2030.libsyn.com/miac-105-...>

# ADAPT 2030



[ADAPT 2030 Mini Ice Age 2015–2035 Series on YouTube](#)

\*\*\* ADAPT 2030 Social Media Links \*\*\*

1.) PATREON [www.patreon.com/adapt2030](http://www.patreon.com/adapt2030)

2.) BITCHUTE <https://www.bitchute.com/hashtag/adapt2030/>

3.) STEEM <https://steemit.com/@adapt2030>



**ADAPT 2030** (36)  
Covering Grand Solar Minimum Intensification, Crop Losses, Cold Weather Anomalies & Stories the MSM Refuses to Discuss  
400 followers | 120 posts | 5 following  
oilseedcrops.org | Joined August 2016

<https://steemit.com/@adapt2030>

\*\*\* Stories also on STEEMIT \*\*\*

4.) \*\*\* ADAPT 2030 True Leaf Market Link \*\*\*



\*\*\* ADAPT 2030 True Leaf Market Link \*\*\*

5.) Mini Ice Age Conversations Podcast

Libsyn: <http://adapt2030.libsyn.com/>

iTunes: <https://itunes.apple.com/us/podcast/adapt-2030-mini-ice-age-conversations/id1200142326>

6.) FB <https://www.facebook.com/Miniiceage>

7.) TWITTER <https://twitter.com/adapt2030>

8.) YOUTUBE [www.youtube.com/user/MyanmarLiving](http://www.youtube.com/user/MyanmarLiving)



# Medium

\*\*\* Stories also on Medium \*\*\*

9.) MEDIUM <https://medium.com/@globalcooling>

## Weekly Podcast



Mini Ice Age Conversations Podcast is available on [iTunes](#), [Soundcloud](#), [Stitcher Radio](#) and [Libsyn](#)