

Strange Ice Thickness Hudson Bay & 18th Fissure Opens

in Hawaii – [ADAPT 2030 Video PDF](#)



The 18th fissure in Kilauea is astounding at how powerful this new fissure is. Everybody's on tap waiting for the steamy eruption up on the Kilauea vent see how that goes along with more expected breakthrough fissures.

18th Fissure Opens In Kilauea - News



Hawaii issues warning for 'explosive eruption' as 18th fissure opens

[ABC News](#) · 7 hours ago

An **18th fissure** began spewing magma on Sunday as officials in Hawaii warned of the possibility for...



Hawaii volcano eruptions: Kilauea spawns 18th fissure

[Austin American-Statesman](#) · 27 minutes ago

EDT May 14: The **Kilauea** volcano has now spawned 18 **fissures**, the latest opening Sunday evening,...

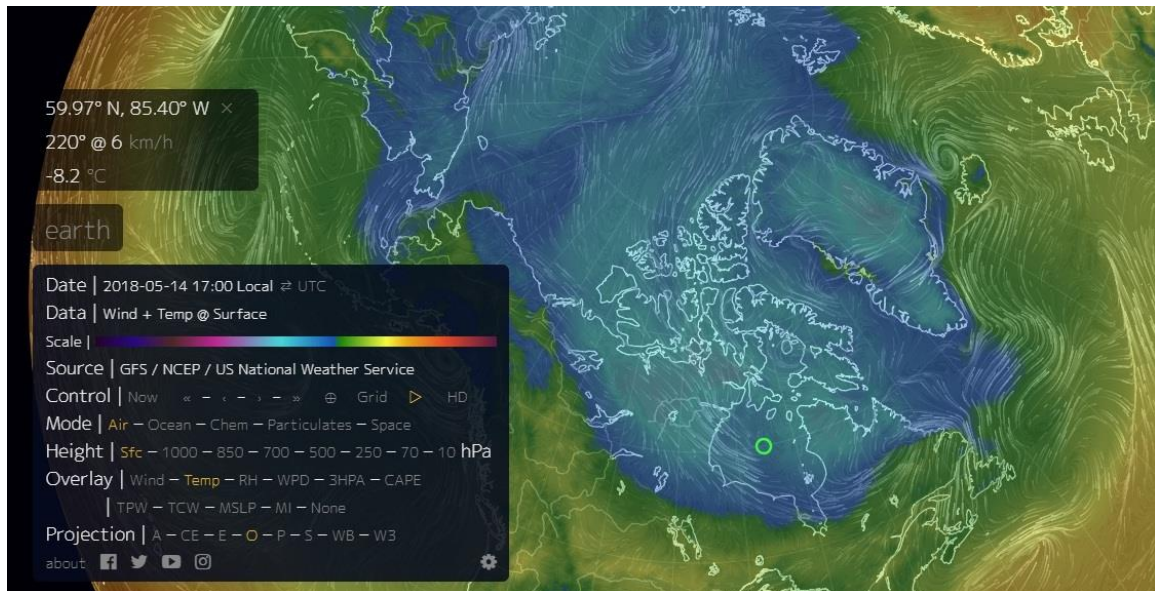


New fissure opens as eruptions continue in Hawaii

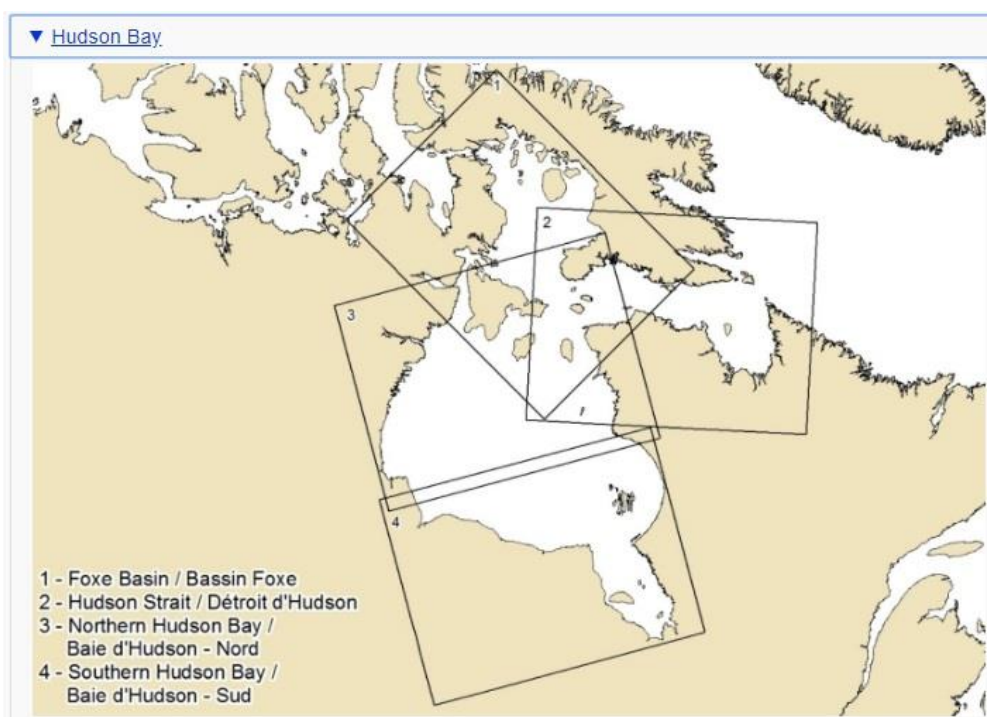
[KTVQ Billings](#) · 1 hour ago

Another **fissure** sprung open on Hawaii's Big Island Sunday morning.

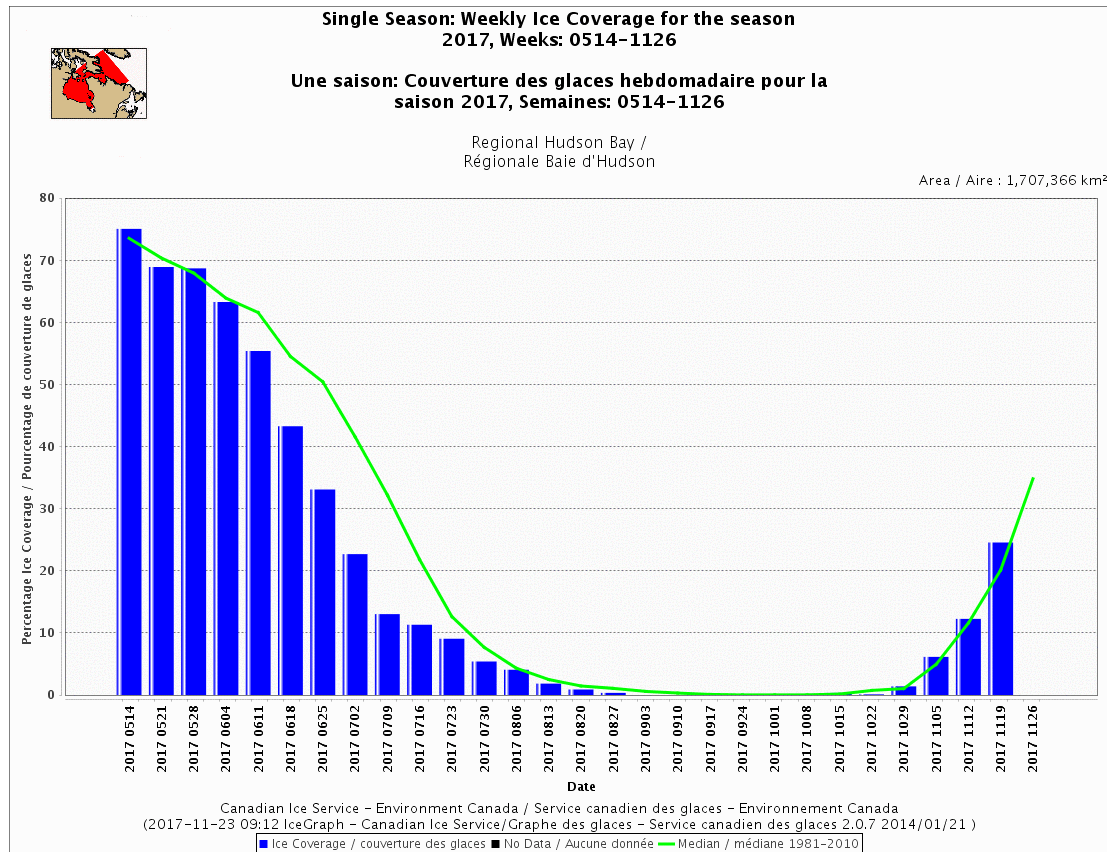
Since we're talking about extreme heat let's talk about cold anomalies. That green circle center of Hudson Bay. I tried to choose the warmest spot and it's still minus 8.2 Celsius. For those of you in the States 0 degrees Celsius is the freezing point. Other areas in the periphery of the bay up there are 17 and 18 degrees Celsius below zero, which pushes that into the low teens in the Fahrenheit digits.



I've been watching the Arctic and Hudson Bay ice anomalies, so when we do talk about Hudson Bay and the Eastern Arctic, here is a close-in in the different regions you can find this on Environment Canada's Ice page talk about the Fox Basin, Hudson Strait, Northern Hudson Bay and the southern Hudson Bay.

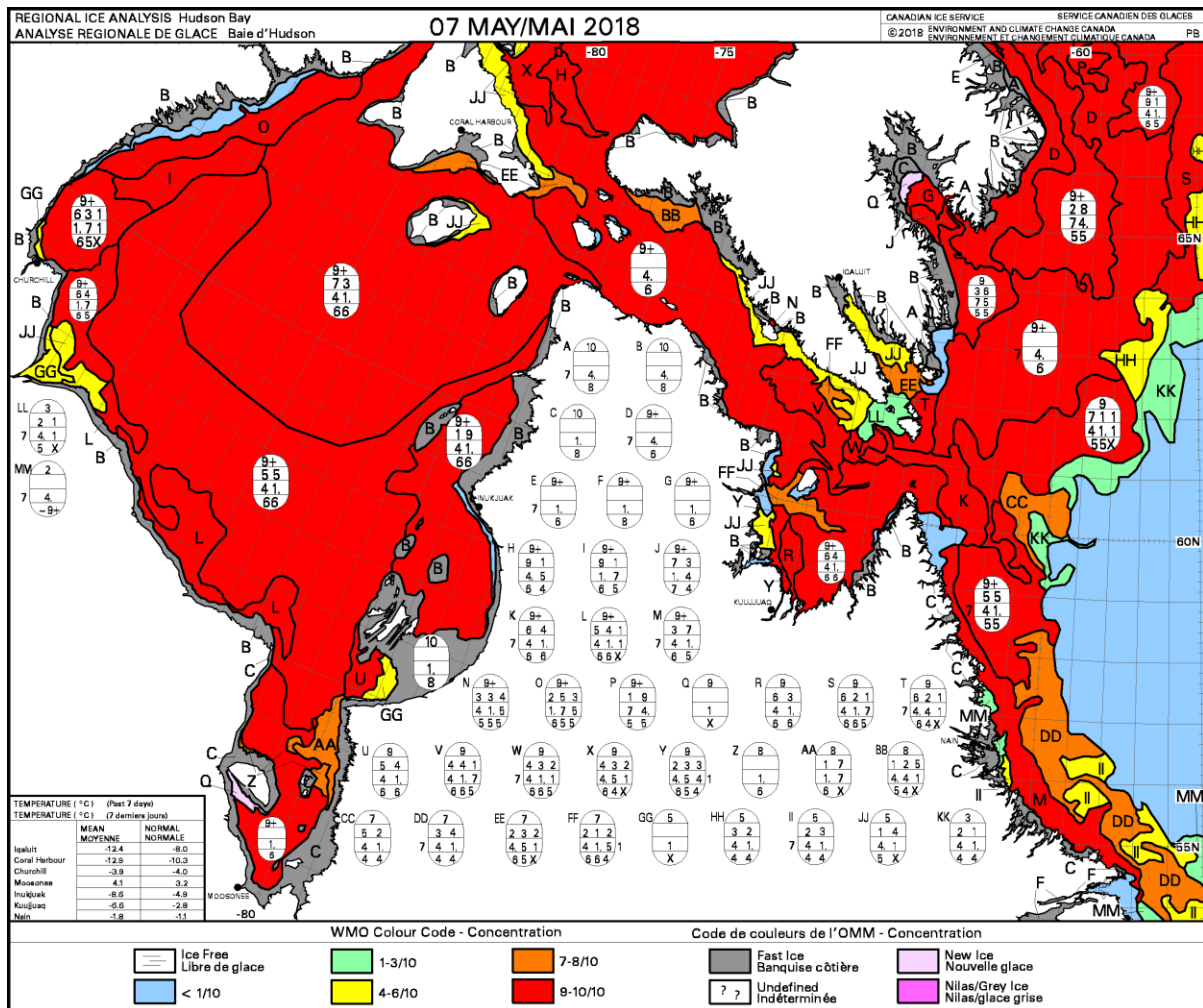


I wanted to see what was going on with the melting up there, because this will be indicative of how the changes are going. Baffin Island was known as the glaciation Sea Point, and the last major glaciation across our planet, so if we were going to look up there we would search for bunching ice and different types of cold anomalies in that Baffin Island area. Perhaps this is a climate driver for the Northern Hemisphere with the Atlantic multidecadal oscillation. But I do believe Baffin Island is a key to something cooling or warming on our planet.

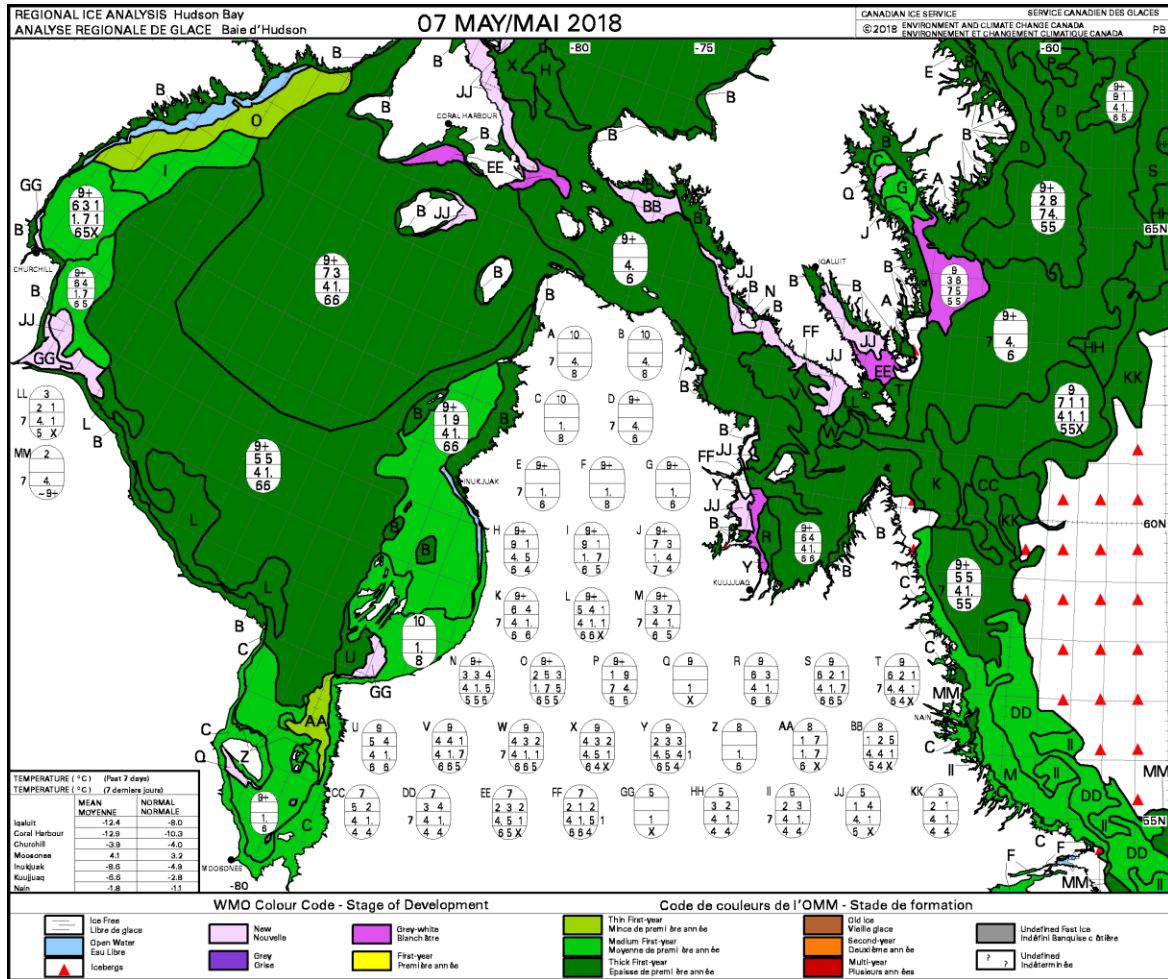


Taking a look (above) at last season, you can see the melt total was about 25 maybe 30 percent of ice had melted out of Hudson Bay by this point in May 14th, May 21st of last year 2017. We're in the same exact week, so we know what the comparison is, but Hudson Bay is still nearly a hundred percent ice coverage. This is why they haven't been updating any of their charts up there for the Canadian Ice Service which I'll show you in a second.

The anomalies are where it's red, that is solid ice cover and then I know the purists out there will say. Well it's not about the coverage it's about the thickness so if that visual doesn't really show you a representation of how much extra ice is there this year maybe this will.




That dark green is thick first year ice the lighter green is the medium thickness. First year ice and that olive color at the Northwest in the Fox Basin is thin first year ice. Dark green how much of is thick first year ice that remains.



Click image for more information

I told you before Canadian ice service has not updated any of their ice products around the Hudson Bay since last year, back in November, but there's still no melting going on. So they literally can't update the ice charts. There's no conspiracy out there it's just proving that there is far more ice this year than in previous years.

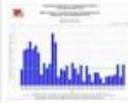
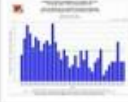
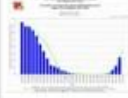

Government of Canada / **Gouvernement du Canada**

Ice Products - Result

Hudson Bay

[Modify Search](#) [New Search](#)

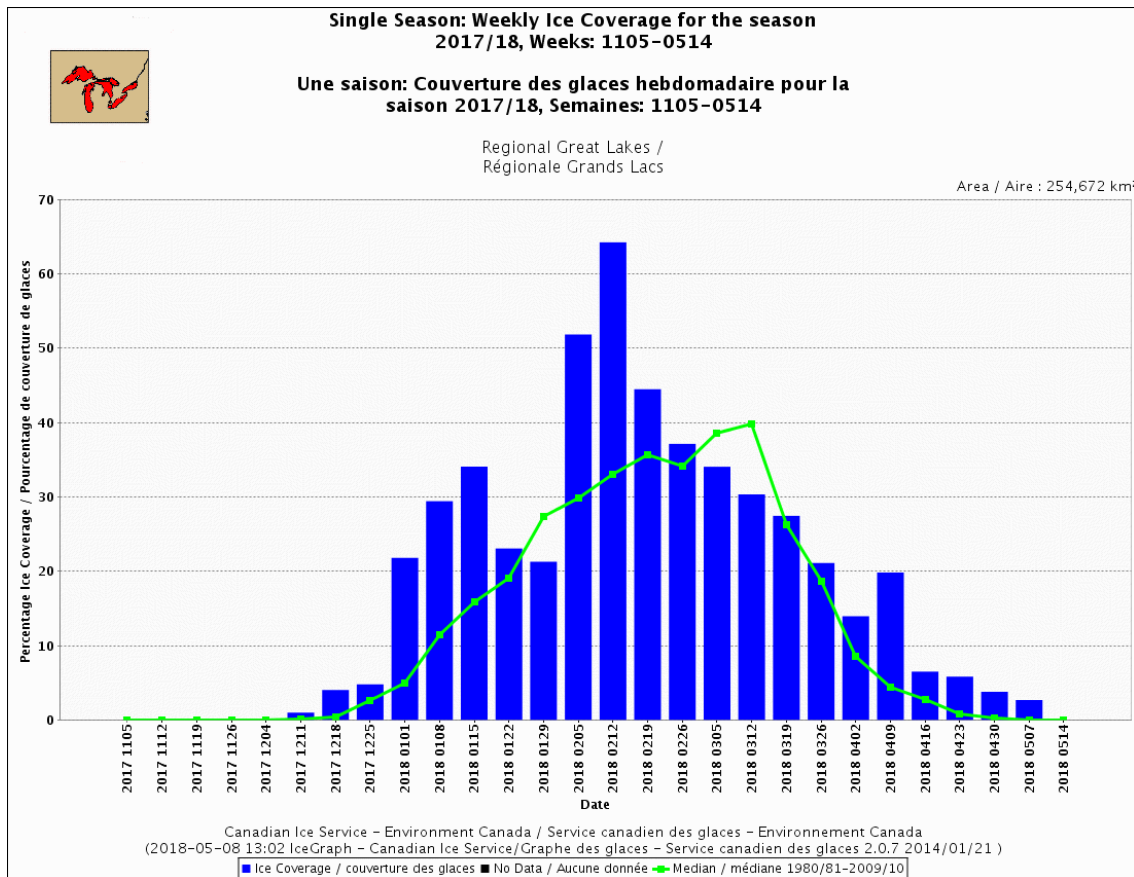
Items 1 to 27 of 27 - Products per page: View Group: Display Thumbnails

Ice Cover Graph - Historical Date Ice Coverage				
#	Product Name	Time (UTC)	Formats	Thumbnail
18	Hudson Bay - CVCHDCTHB	2017/11/20 18:00:00	PDF: 269.8_KB GIF: 154.8_KB	
Ice Cover Graph - Historical Total Accumulated Ice Coverage				
#	Product Name	Time (UTC)	Formats	Thumbnail
19	Hudson Bay - CVCHACTHB	2017/11/20 18:00:00	PDF: 210.2_KB GIF: 118.1_KB	
Ice Cover Graph - Weekly Ice Coverage for the Season				
#	Product Name	Time (UTC)	Formats	Thumbnail
20	Hudson Bay - CVCSWCTHB	2017/11/20 18:00:00	PDF: 292.3_KB GIF: 153.2_KB	

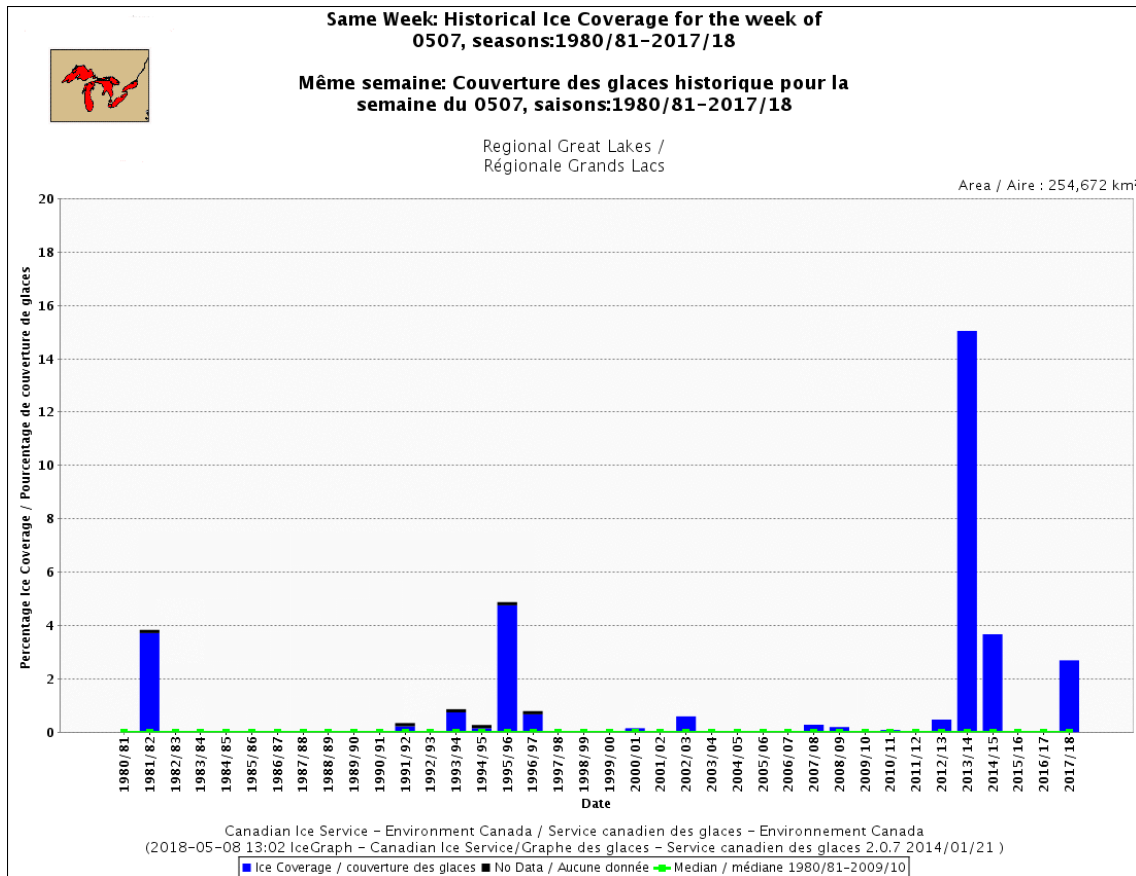
Instead of looking at the bar chart graphic representations and actual ice maps that I showed you before, the red and the green ice coverage totality & thickness of the ice, we're not seeing any updates coming through because there's been no melting.

4	Southern Hudson Bay - WIS30CT	2017/12/01 18:00:00	PDF: 103.7_KB GIF: 88.3_KB	
5	Northern Hudson Bay - WIS31CT	2017/12/01 18:00:00	PDF: 126.7_KB GIF: 110.4_KB	
6	Foxe Basin - WIS32CT	2017/11/14 18:00:00	PDF: 85.8_KB GIF: 79.8_KB	

Great Lakes Ice map, the 1980 to 2010 median is the light green neon line that's running through the center, this is the 2018 season. Notice in February how far above the norm and also as we're tapering out of the season there was still above average concentration all the way from March through April and May.



This graphic (below) is the same week comparison for ice coverage of this exact same week year by year. Let's say 1980 clear to the far left of the chart, this is the exact same week but in 1980, how much ice was there comparatively we're over on the far right here for the 2017-18 season of May 7th. Notice over on the right side of the chart I see exceptional ice in the years 2013-14 2014-15 and then again here we are in 2017-18.



We're starting to see out of season storms with that strange cyclone down off of Chilean coast. You got all-time record rains all over the planet and now we have this late ice event, in Hudson Bay with blizzards down in southern Australia.

Somehow the media just keeps feeding this engine of it's all CO2 it's all CO2 but they forget the biggest driver of our climate that big yellow thing in the sky called the Sun.

Links to all of the articles in the video

ADAPT 2030 Mini Ice Age 2015-2035 Series on YouTube

<https://www.youtube.com/user/MyanmarLiving>

Nullschool Temperatures

<https://earth.nullschool.net/#current/wind/surface/level/overlay=temp/orthographic=-96.87,73.09,653/loc=-85.398,59.968>

Canadian Ice Service Ice Charts <https://www.canada.ca/en/environment-climate-change/services/ice-forecasts-observations/latest-conditions.html>

Iceberg Count May 14, 2018 <http://iceweb1.cis.ec.gc.ca/Prod/page3.xhtml>

Hudson Bay Ice NOT UPDATING <http://iceweb1.cis.ec.gc.ca/Prod/page3.xhtml>

Great Lakes Ice Coverage Maps <http://iceweb1.cis.ec.gc.ca/Prod/page3.xhtml>

Icebergs from Antarctic to save Cape Town Cape Town's Day Zero

<http://www.bbc.com/news/world-africa-43989106>

<https://pbs.twimg.com/media/DcjWhuQWsAcRyBj.jpg>

Heavy ice off East Coast 2017 caused by winds, cold temperatures, and icebergs

<https://polarbearsience.com/2017/06/12/heavy-ice-off-east-coast-2017-caused-by-winds-cold-temperatures-and-icebergs/>

Why Are Icebergs Suddenly Swarming The North Atlantic?

<http://www.iflscience.com/environment/why-are-icebergs-suddenly-swarming-the-north-atlantic/>

Iceberg Outlook <https://www.navcen.uscg.gov/pdf/iip/outlook/IcebergOutlook.pdf>

<https://pbs.twimg.com/media/DcxHYfCXUAI2z1A.jpg>

Best time to see icebergs <https://www.tripsavvy.com/how-to-see-iceberg-alley-in-newfoundland-canada-4138564>

Iceberg nursery failing as record icebergs sighted, contradicting stories

<https://www.washingtonexaminer.com/policy/energy/alaskas-iceberg-nursery-failing-noaa-warns>

