



**The Republic of the Union of Myanmar**

**Ministry of Mines**

# **Current Mining Activities in Myanmar**

**Presented by U Kyaw Thet**

**Director**

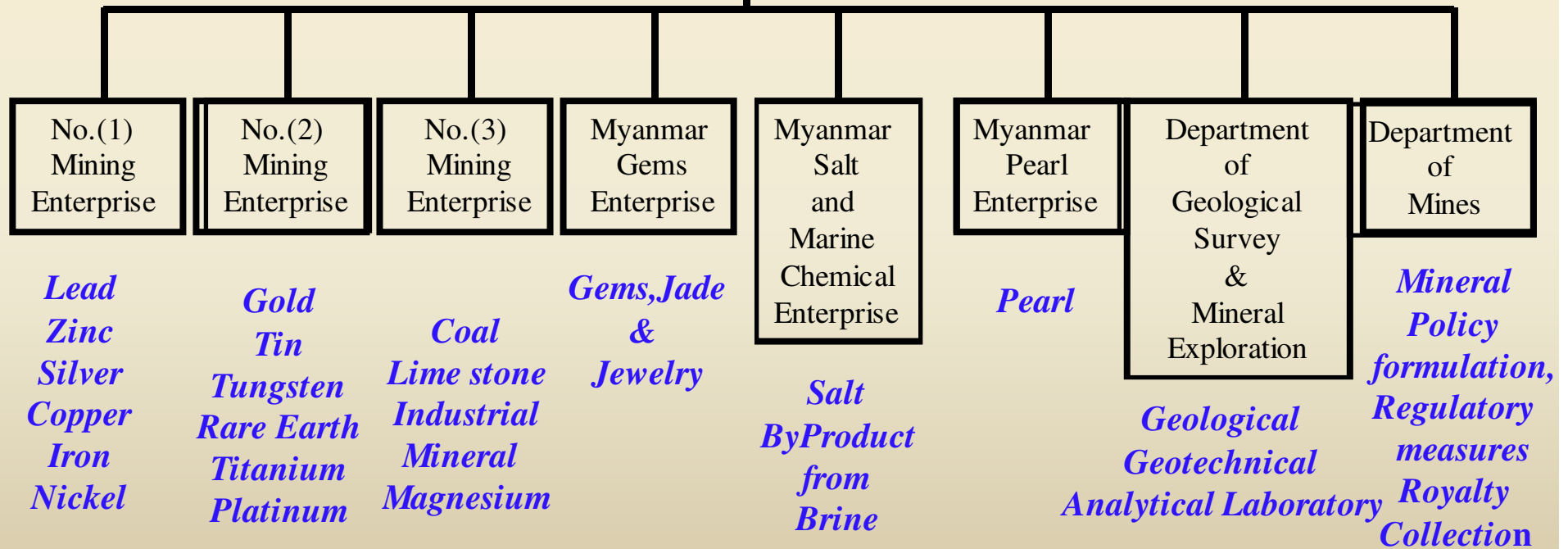
**Department of Mines**

**Photo:Ko Zaw(Alinyaung)**

6/21/2012

# Organisation Chart of the Ministry

**Union Minister**



# Department of Mines



Responsible for

- administration of mineral policy and planning,
- mineral legislation,
- mine inspection and safety,
- mineral conservation and mining related environmental control.

# Department of Geological Survey & Mineral Exploration

Responsible for

Country wide geological mapping, Mineral prospecting and exploration using geological, geochemical, geophysical and exploratory drilling techniques.



# No.(1) Mining Enterprise

Responsible for production of -

Lead

Iron

Zinc

Antimony

Silver

Nickel

Copper

Chromite

According to market oriented policy and leading to privatization, the deposits are being worked on Joint-Venture basis with local and Foreign Companies.

# No.(2) Mining Enterprise

Responsible for production of -

**Tin Concentrates**

**Wolfram Concentrates**

**Tin-Wolfram-Scheelite mixed Concentrates**

**Refined gold**

**Refines tin**



# No.(3) Mining Enterprise

Responsible for the production of

Coal

Manganese

Limestone

Barite

Gypsum

Dolomite

Fluorite

Bentonite

Industrial Clay

Dimension stones



# Myanmar Gems Enterprise

Responsible for -

- taking supervision
- and allowing permit for local private companies .

Moreover, also encourages gemstone and jewellery shops and allows permit.

Photo:Ko Zaw(Alinyaung)





# Myanmar Pearl Enterprise



Responsible for -

- production a large quantity of good-quality cultured pearls,
- as well as to collect mother - of - pearl oysters from the sea.

# Myanmar Salt & Marine Chemical Enterprise

Responsible for supervision and allowing permit for



Solar Salt

Potassium chloride

Iodated salt

Oral rehydration salt

Magnesium chloride

Marine chemicals

Magnesium sulphate

Soda ash

## VVV various changes in legislation

- ✚ **1988 Union of Myanmar Foreign Investment Law**
- ✚ **Rules relating to the Union of Myanmar Foreign Investment Law**
- ✚ **1992 The Salt Enterprise Law**
- ✚ **1994 Myanmar Citizens Investment Law**
- ✚ **1994 Union of Myanmar Mines Law**
- ✚ **1994 Rule relating to Mines Law**
- ✚ **1995 The Myanmar Gemstone Law**
- ✚ **1994 Rule relating to Gemstones Law**
- ✚ **1995 Myanmar Pearl Law**

# MINERAL POLICY

- ❖ **To boost up present production**
  - **to fulfill the growing domestic needs**
  - **to increase foreign exchange earnings**
- ❖ **To invite participation in terms of technical know-how and investment from sources within the country and abroad**
- ❖ **Mineralwise emphasis to be given for development**
  - **Copper**
  - **Gold**
  - **Coal**
  - **Nickel**
  - **Lead/Zinc**
  - **Iron and Steel**
  - **Construction-related industrial minerals**
    - **cement making minerals**
    - **dimensionstones**
    - **aggregates**

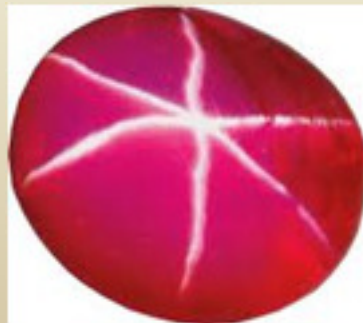
## *Objectives of the Myanmar Mines Law (1994)*

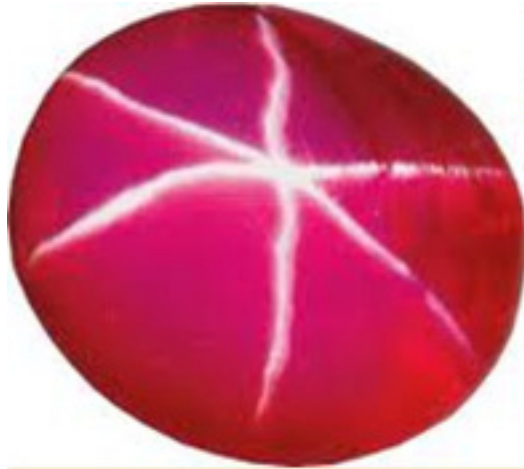
- (a) to implement the Mineral Resources Policy of the Government;**
- (b) to fulfill the domestic requirements and to increase export by producing more mineral products;**
- (c) to promote development of local and foreign investment in respect of mineral resources;**
- (d) to supervise, scrutinize and approve applications submitted by person or organization desirous of conducting mineral prospecting, exploration or production;**
- (e) to carry out for the development of, conservation, utilization and research work of mineral resources;**
- (f) to protect the environmental conservation works that may have detrimental effect due to mining operation.**

Gemstones such as Rubies, Sapphire, colored gemstone and Jade are also exported.



6/21/2012





## Rubies, Sapphires



The best rubies and sapphire in the world are produced from **Mogok**, Upper Myanmar known as the Land of Rubies since 13 Century.

- The ruby mines are situated about 150 miles to the north east of Mandalay in Mandalay division .
- Sale of precious stones is done through tri-annually held gems emporiums, gems trading centers and gems marts and by private license holders.

# Jade



True imperial jadeite of fine green colour.

Jadeite jade is produced from the Kachin State in upper Myanmar. There are three Gems & Jade Emporiums per year .Jade are mainly soled by these emporiums.





# Cathode Copper



- Produced from **S & K Mine, Monywa**
- annual production at present is 25000 tons.
- operated by Myanmar Yang Tse Copper Limited, MYTCL,

# Refined Tin, Tin Concentrate, Tin Wolfram mixed concentrates.

- Mawchi mine
- Tanintharyi division
- Heinda Kanbauk and Kalonta
- All tin and tungsten mines have been privatized.
- At present there is no state operated tin tungsten mine apart from one tin smelter in Myanmar.



# Lead and Zinc Concentrates

- Mining operation in **Namtu- Bawdwin Lead- Zinc Mine.**
- Other Lead- Zinc mines - **Yadanar Theingi and Bawsaing** mines.



# Gold



- **Kyaukpahto gold mine** situated in Kawlin township, Sagaing division and
- other five large scale gold mines are Modi - Momei work site (A),(B),(C) ,(D),(E) in Yamethin township Mandalay division
- and **Phayoungtaung gold mine** in Patheingyi township Mandalay division.

# Coal



- Practicing production sharing contract system in which 100% percent of investment is borne by the private companies and the agreed split ratio is shared between the two parties.
- There is no more production of coal by state sector after privatization of Kalewa in Sagaing Division and Namma in Northern Shan state to the private companies in 2010.
- As of 30 September 2011, 43 coal production licenses issued to 32 local private companies.

# Barytes



- One Barytes powdering plant in **Thazi**, near Mandalay.
- The powdered product is supplied for drilling wells under Myanmar Oil and Gas Enterprise (MOGE) and also for oil wells operating under joint venture agreement with MOGE.

# Iron and Steel

- No.1 Iron and Steel Plant at Pyin Oo Lwin
- The products are consumed locally for construction works.
- At Present, the plant is operated by Ministry of Defense.



## Iron Ore Exploration



- To study Iron ore deposit at **kathaing Taung** ,
- **DGSE and Kunming Henglong Architecture Mechanical Construction Co.,Ltd**



# Limestone



- Two types of limestone are produced in Myanmar
  - high calcium content with no outstanding physical appearance
  - with inclusions giving rise to beautiful texture and color are used as decoration limestone, known as dimension stones.

# Industrial Minerals

- Fireclay,
- Yellow ochre,
- China clay ,
- Asbestos ,
- Bentonite,
- Felspar



# Ferro Nickel Production



- **Myanmar CNICO** and ME(3)
- PSC at **Tagaung Tang** (Mandalay Region)
- US\$ 787 – 899 million.
- The mine is opened on 27.3.2011
- At Present, it's under commissioning stage and production will start **soon**.

# Ferro Nickel Exploration

- North Mining Investment Co.,Ltd & DGSE
- At Mwe Taung
- Already signed to do the feasibility study on 6.6.2012.

# Production Sharing Contract (P.S.C) System

- Myanmar practice the production sharing contract (P.S.C) system.
- In the production sharing types of agreement the investor shall have to contribute **100% of investment** in which case the government would expect a share of the production and a production sharing will be signed with sharing ratio to be agreed upon between the parties.

# No. of FDI

- There are (7) FDI with Australia, China, Russia, Thailand and Vietnam in production of Zinc, Iron, Ferronickel, Gold, Tin and Marble.

## Issued Mining Permits for Local Companies.

- Ministry of Mine already issued 1355 mining permits since 31.3.2012 for citizens and can classified by following:

• Exploration Permit	-	551 Nos
• Small Scale Mining Permit	-	520 Nos
• Large Scale Mining Permit	-	129 Nos
• Subsistence Mining Permit	-	20 Nos
• Small Processing Permit	-	135 Nos

and mainly for Tin – Tungsten, Copper, Antimony, Iron, Coal , Industrial Minerals, Marbles, Granite , Magnesia dioxide, Goal and lime stone.

[www.cmtevents.com](http://www.cmtevents.com)

# Myanmar Mining Summit

23-25 July 2012, YANGON

OFFICIAL Summit Organised by:



Ministry of Mines, Myanmar







# Conclusion

We hope there'll be more cooperation between

Myanmar and Your Country

in the near future.